

WEST POINT, VIRGINIA

AL-5160 (FAA)

17173

VORTAC HCM <b>108.8</b> Chan <b>25</b>	APP CRS <b>337°</b>	Rwy Idg TDZE Apt Elev	<b>N/A</b> <b>N/A</b> <b>20</b>
--	------------------------	-----------------------------	---------------------------------------

**VOR-A**

MIDDLE PENINSULA RGNL (F'YJ)

**▽** When local altimeter setting not received, use Newport News altimeter setting and increase all MDA 80 feet.

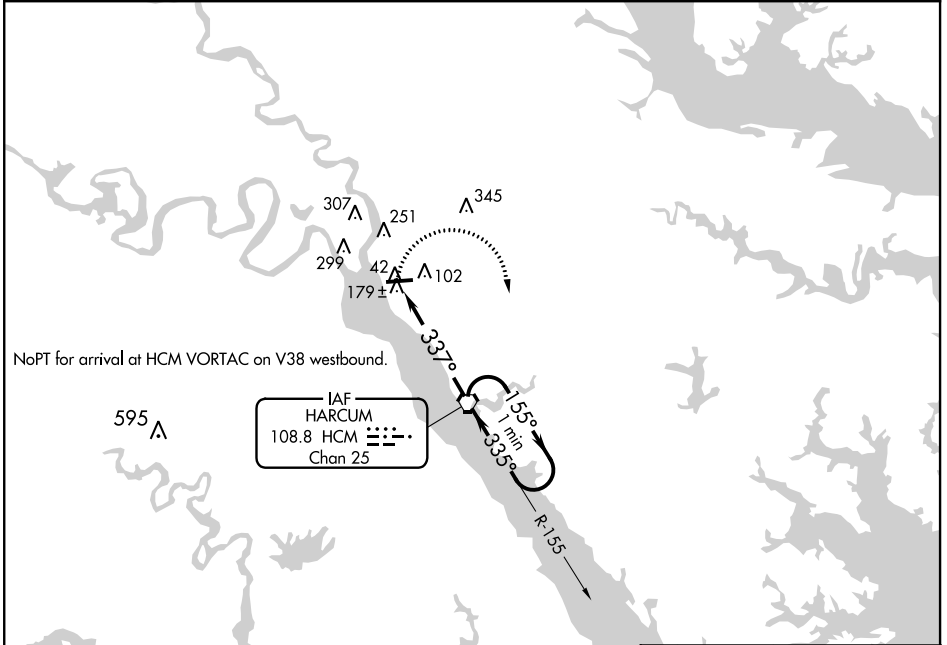
**▲**

MISSED APPROACH: Climbing right turn to 1700 direct HCM VORTAC and hold.

AWOS-3  
**132.825**

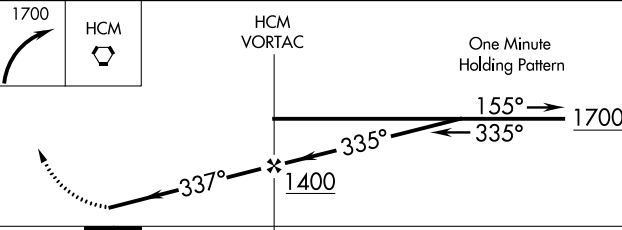
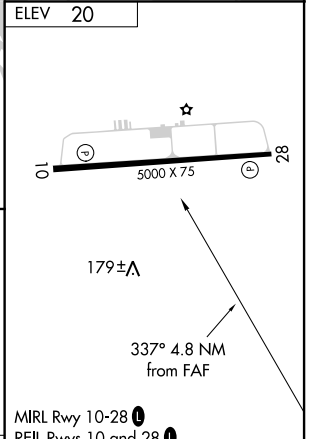
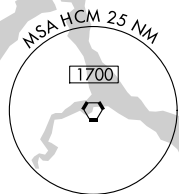
POTOMAC APP CON  
**126.4 282.375**

UNICOM  
**123.0 (CTAF) 0**



NE-3, 31 JAN 2019 to 28 FEB 2019

NE-3, 31 JAN 2019 to 28 FEB 2019



MIRL Rwy 10-28 (1)  
REIL Rwys 10 and 28 (1)

CATEGORY	A	B	C	D	FAF to MAP 4.8 NM					
	480-1 460 (500-1)	620-1 600 (600-1)		NA	Knots	60	90	120	150	180
<b>C</b> CIRCLING					Min:Sec	4:48	3:12	2:24	1:55	1:36

WEST POINT, VIRGINIA  
Amdt 4A 15SEP16

37°31'N-76°46'W

MIDDLE PENINSULA RGNL (F'YJ)  
**VOR-A**