

RNAV (GPS) RWY 14L

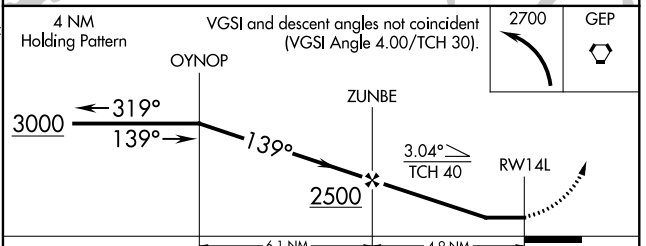
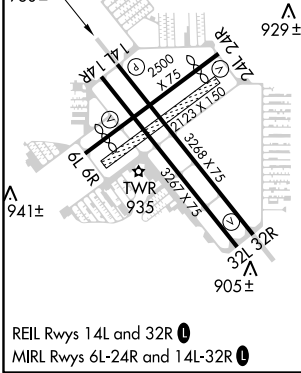
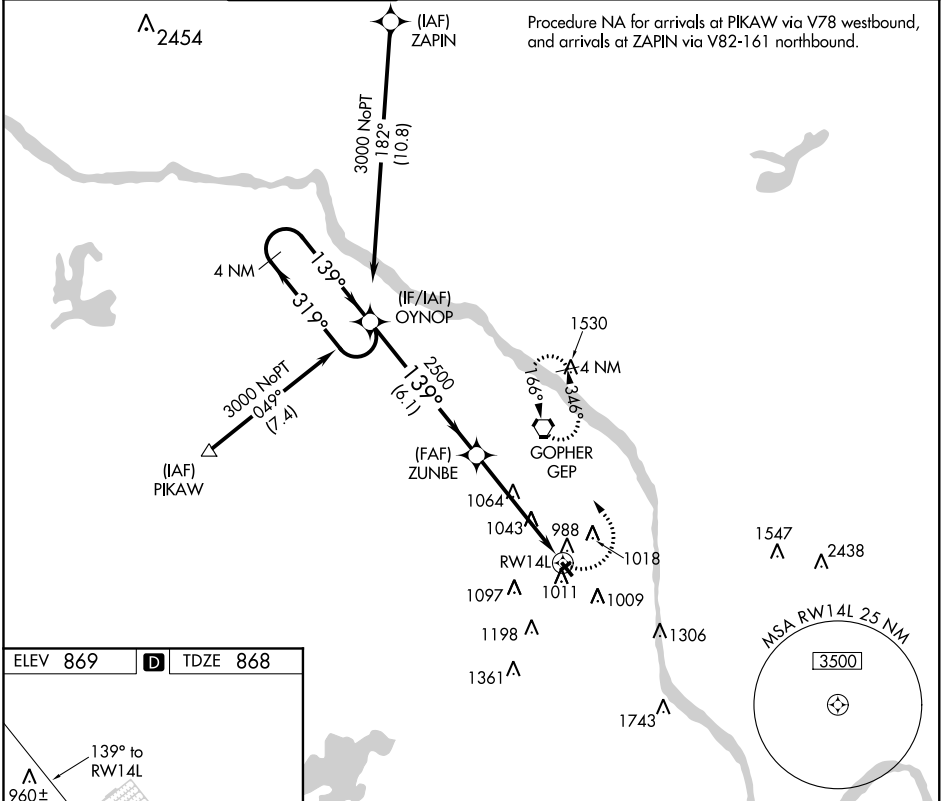
CRYSTAL (MIC)

APP CRS 139°	Rwy Idg 3268
	TDZE 868
	Apt Elev 869

⚠ DME/DME RNP-0.3 NA. Visibility reduction by helicopters NA.
⚠ When local altimeter setting not received, use Anoka County-Blaine (Janes Field) altimeter setting and increase all MDA 80 feet, increase Circling Cat D visibility ¼ mile.

MISSED APPROACH: Climbing left turn to 2700 direct GEP VORTAC and hold.

ATIS 124.475	MINNEAPOLIS APP CON 126.5 335.65	CRYSTAL TOWER* 120.7 (CTAF) 0	GND CON 121.6	CLNC DEL 121.6	MINNEAPOLIS CLNC DEL 121.6 (When tower closed)	UNICOM 122.95
------------------------	--	---	-------------------------	--------------------------	---	-------------------------



CATEGORY	A	B	C	D
LNAV MDA	1380-1	512 (600-1)	1380-1½ 512 (600-1½)	1380-1¾ 512 (600-1¾)
CIRCLING	1380-1	511 (600-1)	1380-1½ 511 (600-1½)	1460-2 591 (600-2)

NC-1, 31 JAN 2019 to 28 FEB 2019

NC-1, 31 JAN 2019 to 28 FEB 2019