

WAAS CH 61301 W34A	APP CRS 339°	Rwy Idg 8500 TDZE 329 Apt Elev 346
--	------------------------	---

RNAV (GPS) RWY 34L

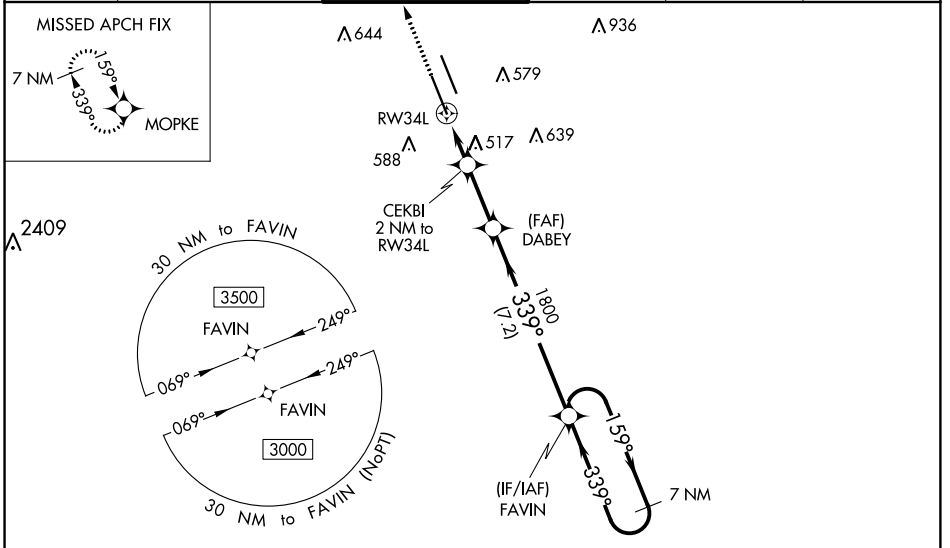
JACKSON-MEDGAR WILEY EVERS INTL (JAN)

⚠ For uncompensated Baro-VNAV systems, LNAV/VNAV NA below -7°C (20°F) or above 54°C (130°F). Circling NA for Cat E southwest of Rwy 16R-34L. DME/DME RNP-0.3 NA. VDP and Baro-VNAV NA when using Hawkins Field altimeter setting. When local altimeter setting not received, use Hawkins Field altimeter setting and increase all DA 19 feet and all MDA 20 feet, increase LNAV/VNAV all Cats visibility to 1½ SM and LNAV Cats C/D/E visibility to RVR 5000. For inop ALS, increase LNAV/VNAV Cat E visibility to 1½ SM and LNAV Cat E visibility to 1½ SM. For inop ALS when using Hawkins Field altimeter setting, increase LPV Cat E visibility to RVR 4500, LNAV/VNAV Cat E visibility to 1½ SM, and LNAV Cat E visibility to 1½ SM. Inop table does not apply to LPV. Rwy 34L helicopter visibility reduction below RVR 4000 NA.

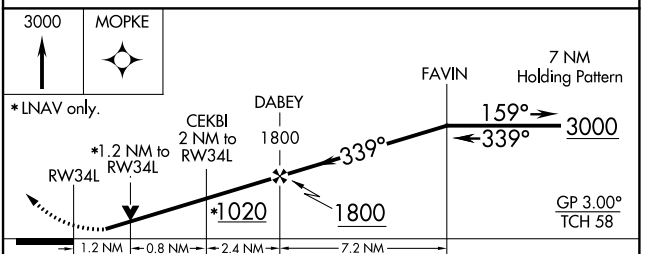
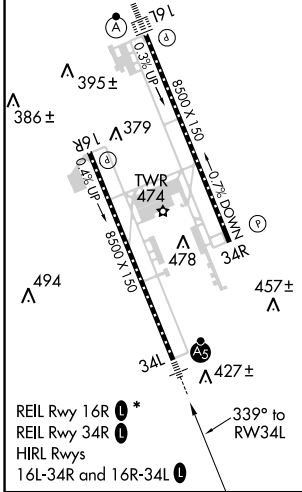
MALS R

MISSED APPROACH:
Climb to 3000 direct MOPKE and hold.

ATIS 121.05	JACKSON APP CON * 123.9 317.7	JACKSON TOWER * 120.9 (CTAF) 0 352.0	GND CON 121.7 348.6	120.7 0*	UNICOM 122.95
-----------------------	---	--	-------------------------------	-----------------	-------------------------



ELEV 346	TDZE 329
----------	----------



CATEGORY	A	B	C	D	E
LPV DA	579/40 250 (300-¾)				
LNAV/VNAV DA	875-1½ 546 (600-1¾)				
LNAV MDA	780/40 451 (500-¾)		780/45 451 (500-¾)		
C CIRCLING	880-1	534 (600-1)	900-1½ 554 (600-1½)	960-2 614 (700-2)	1040-2½ 694 (700-2½)

SC-4, 31 JAN 2019 to 28 FEB 2019

SC-4, 31 JAN 2019 to 28 FEB 2019