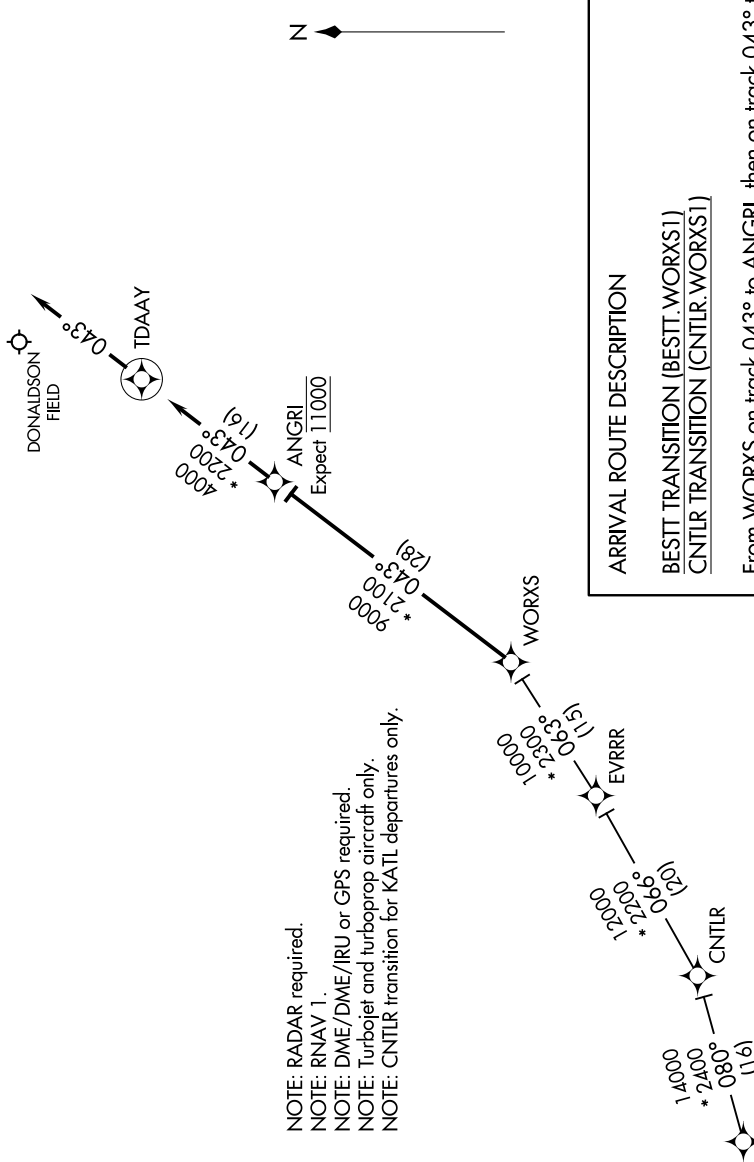


WORXS ONE ARRIVAL (RNAV)

GREER, SOUTH CAROLINA

SE-2, 31 JAN 2019 to 28 FEB 2019

GREER APP CON
 118.8 270.275 (WEST)
 119.4 350.2 (EAST)
 GREENVILLE-SPARTANBURG INTL ATIS
 134.25



- NOTE: RADAR required.
- NOTE: RNAV 1.
- NOTE: DME/DME/IRU or GPS required.
- NOTE: Turbojet and turboprop aircraft only.
- NOTE: CNTLR transition for KATL departures only.

ARRIVAL ROUTE DESCRIPTION

BEST TRANSITION (BEST.WORXS1)
CNTLR TRANSITION (CNTLR.WORXS1)

From WORXS on track 043° to ANGR1, then on track 043° to TDAAY, then on heading 043°. Expect RADAR vectors to final approach course.

NOTE: Chart not to scale.

SE-2, 31 JAN 2019 to 28 FEB 2019

WORXS ONE ARRIVAL (RNAV)

GREER, SOUTH CAROLINA