

VORTAC DNV <b>111.0</b> Chan <b>47</b>	APP CRS <b>016°</b>	Rwy Idg <b>6006</b> TDZE <b>674</b> Apt Elev <b>697</b>
--	------------------------	---

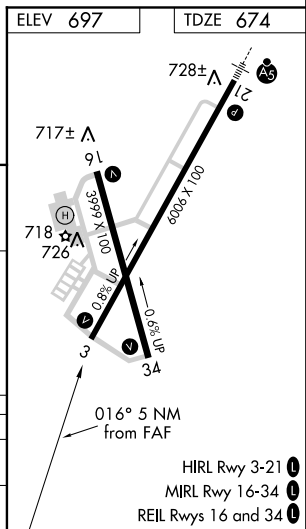
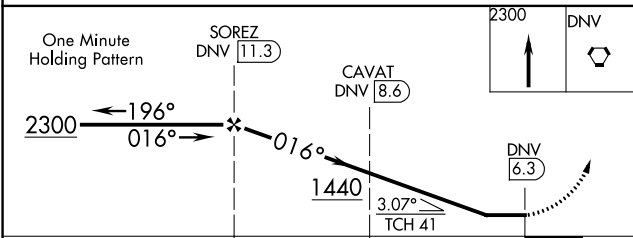
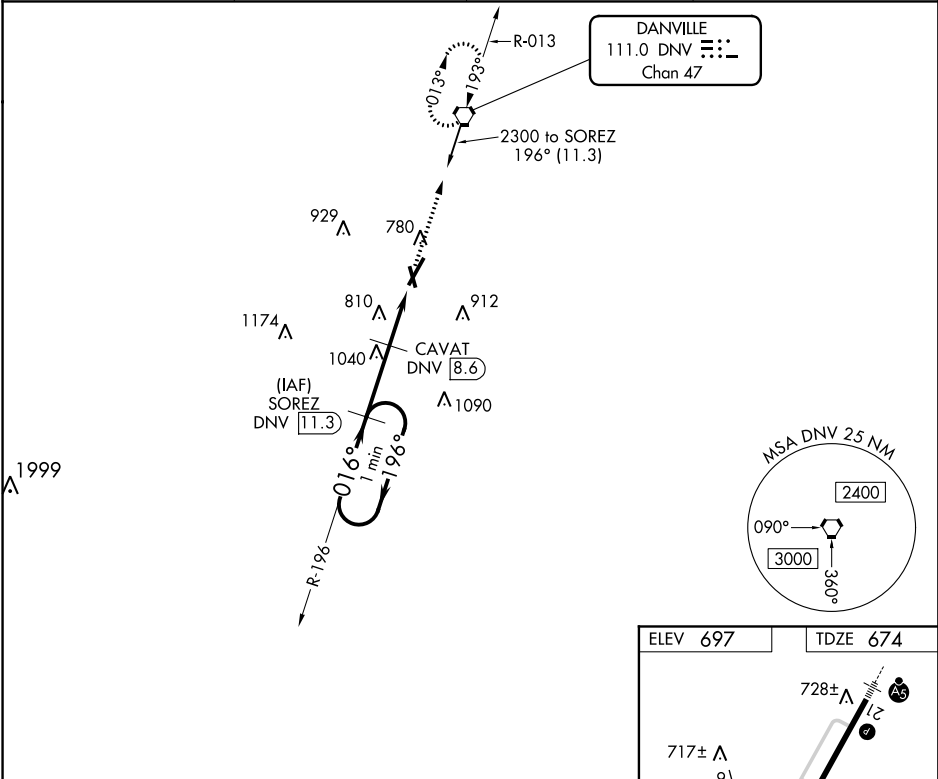
# VOR/DME RWY 3

VERMILION RGNL (DNV)

**⚠** If local altimeter setting not received, use University of Illinois-Willard altimeter setting and increase all MDAs 100 feet.  
**⚠** Helicopter visibility reduction below 3/4 SM NA.

MISSED APPROACH: Climb to 2300 direct DNV VORTAC and hold.

AWOS-3 <b>119.275</b>	CHAMPAIGN APP CON ★ <b>121.35 285.65</b>	CLNC DEL <b>121.7</b>	UNICOM <b>122.7 (CTAF) 0</b>
--------------------------	---	--------------------------	---------------------------------



CATEGORY	A	B	C	D
S-3	1120-1	446 (500-1)	1120-1¼ 446 (500-1¼)	1120-1½ 446 (500-1½)
CIRCLING	1160-1	463 (500-1)	1160-1½ 463 (500-1½)	1260-2 563 (600-2)

- HIRL Rwy 3-21 0
- MIRL Rwy 16-34 0
- REIL Rws 16 and 34 0

EC-3, 31 JAN 2019 to 28 FEB 2019

EC-3, 31 JAN 2019 to 28 FEB 2019