

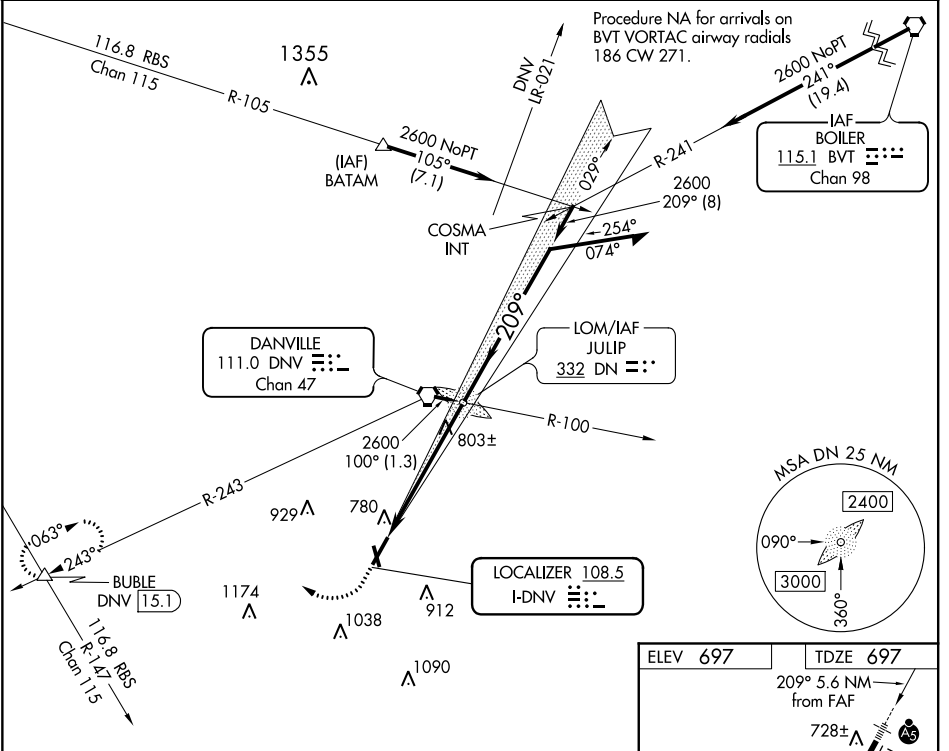
LOC I-DNV 108.5	APP CRS 209°	Rwy Idg 6006
		TDZE 697
		Apt Elev 697

ILS or LOC RWY 21

VERMILION RGNL (DNV)

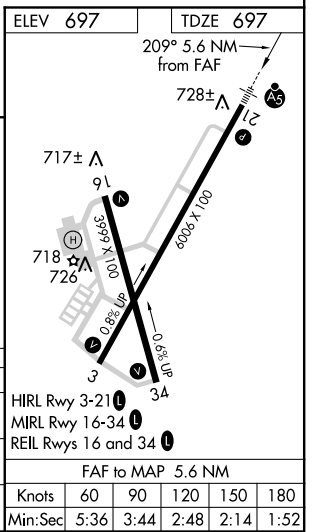
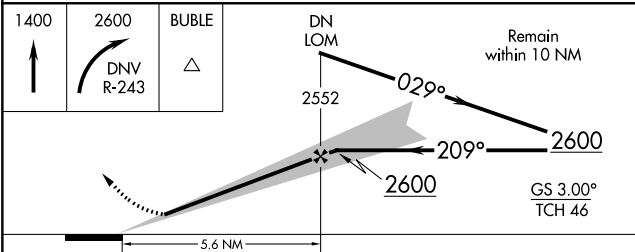
<p>▽ If local altimeter not received, use University of Illinois-Willard altimeter setting, and increase all DAs/MDAs 100 feet.</p> <p>▲ MALSRS</p>	<p>MISSED APPROACH: Climb to 1400, then climbing right turn to 2600 via DNV R-243 to BUBLE INT and hold.</p>
---	--

AWOS-3 119.275	CHAMPAIGN APP CON * 121.35 285.65	CLNC DEL 121.7	UNICOM 122.7 (CTAF) 0
--------------------------	---	--------------------------	---------------------------------



EC-3, 31 JAN 2019 to 28 FEB 2019

EC-3, 31 JAN 2019 to 28 FEB 2019



CATEGORY	A	B	C	D
S-ILS 21	897-1/2 200 (200-1/2)			
S-LOC 21	1080-1/2	383 (400-1/2)	1080-3/4	383 (400-3/4)
CIRCLING	1160-1	463 (500-1)	1160-1/2	1260-2
			463 (500-1/2)	563 (600-2)