

WAAS CH 99709 W28A	APP CRS 278°	Rwy Idg TDZE Apt Elev	3898 900 906
--	------------------------	-----------------------------	---

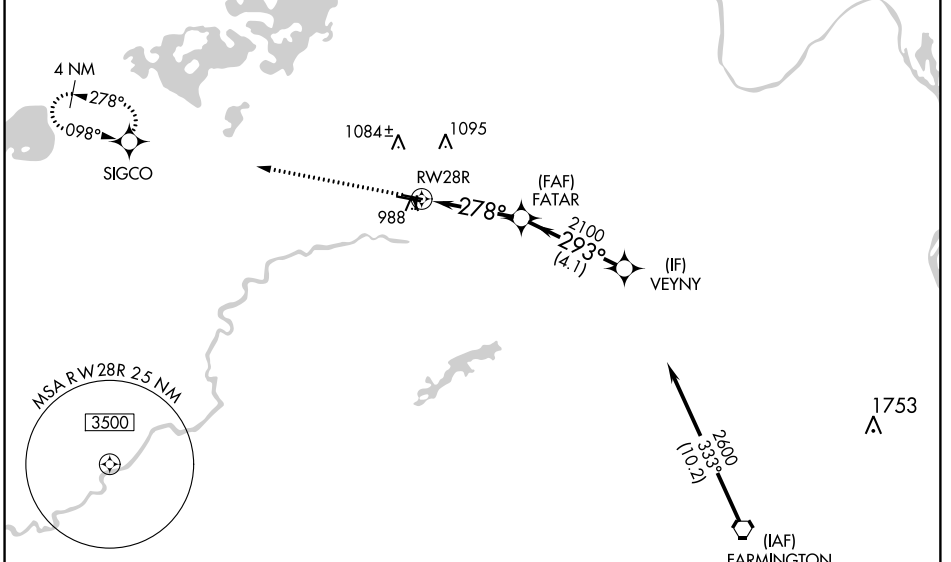
RNAV (GPS) RWY 28R

FLYING CLOUD (FCM)

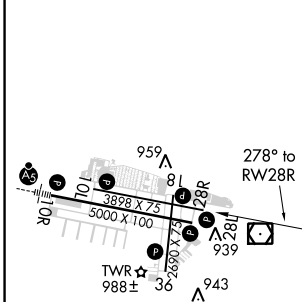
⚠ Baro-VNAV NA when using Minneapolis-St Paul Intl/Wold Chamberlain altimeter setting. For uncompensated Baro-VNAV systems, LNAV/VNAV NA below -21°C (-5°F) or above 54°C (130°F). DME/DME RNP-0.3 NA. Helicopter visibility reduction below 3/4 SM NA. Night Landing: Rwy 18/36 NA. When local altimeter setting not received, use Minneapolis-St Paul Intl/Wold Chamberlain altimeter setting and increase all DA 34 feet and all MDA 40 feet; increase Circling Cat D visibility 1/4 mile.

MISSED APPROACH: Climb to 2800 direct SIGCO and hold.

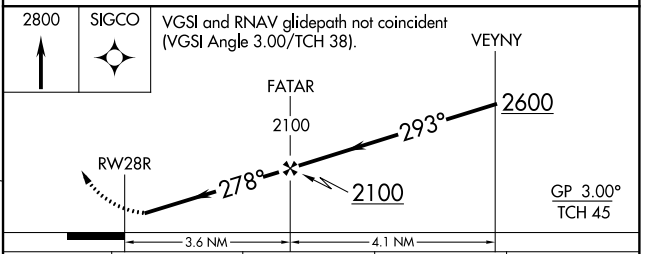
ATIS 124.9	MINNEAPOLIS APP CON 134.7 284.7	FLYING CLOUD TOWER ★ 119.15 (CTAF) 0	GND CON 121.7	MINNEAPOLIS CLNC DEL 121.7 (When tower closed)	UNICOM 122.95
----------------------	---	--	-------------------------	---	-------------------------



ELEV 906	TDZE 900
----------	----------



HIRL Rwy 10R-28L	REL Rwys 10L, 28R	REL Rwys 18, 28L, and 36	MIRL Rwys 10L-28R and 18-36
------------------	-------------------	--------------------------	-----------------------------



CATEGORY	A	B	C	D
LPV DA		1150-1	250 (300-1)	
LNAV/VNAV DA		1150-1	250 (300-1)	
LNAV MDA		1240-1	340 (400-1)	
C CIRCLING	1320-1 414 (500-1)	1440-1 534 (600-1)	1440-1½ 534 (600-1½)	1540-2 634 (700-2)

NC-1, 31 JAN 2019 to 28 FEB 2019

NC-1, 31 JAN 2019 to 28 FEB 2019