


WAAS CH 42519 W10B	APP CRS 098°	Rwy Idg TDZE Apt Elev	5000 905 906
--	------------------------	-----------------------------	---

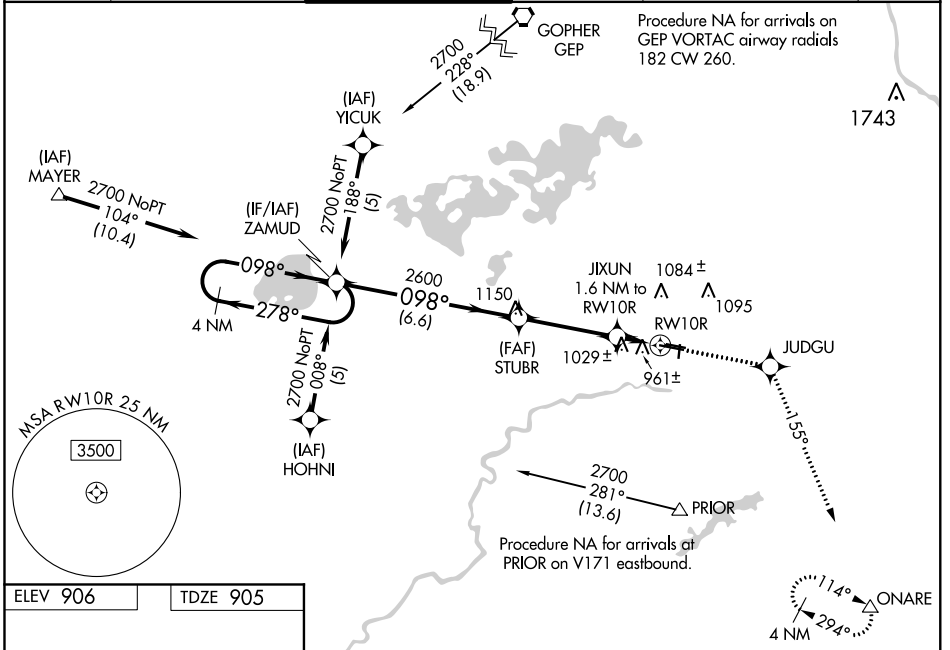
RNAV (GPS) RWY 10R

FLYING CLOUD (FCM)

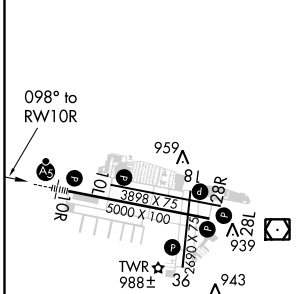
⚠ Baro-VNAV NA when using Minneapolis-St Paul Intl/Wold Chamberlain altimeter setting. For uncompensated Baro-VNAV systems, LNAV/VNAV NA below -1.6°C (4°F) or above 47°C (116°F). DME/DME RNP-0.3 NA. When local altimeter setting not received, use Minneapolis-St Paul Intl/Wold Chamberlain altimeter setting and increase all DA 34 feet and all MDA 40 feet and increase LNAV Cat C visibility ¼ mile. For inoperative MALSR increase LNAV Cat D visibility to 1¼. Night Landing: Rwy 18/36 NA.




MALSR

MISSED APPROACH:
 Climb to 3000 direct JUDGU and on track 155° to ONARE and hold.

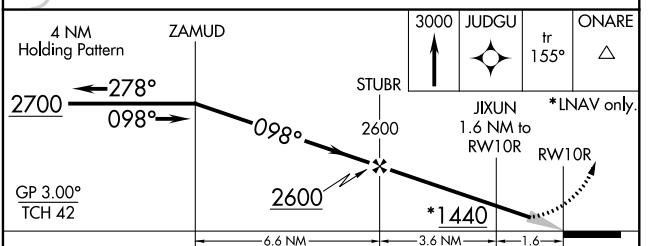
ATIS 124.9	MINNEAPOLIS APP CON 134.7 284.7	FLYING CLOUD TOWER* 119.15 (CTAF) 	GND CON 121.7	MINNEAPOLIS CLNC DEL 121.7 (When tower closed)	UNICOM 122.95
----------------------	---	---	-------------------------	---	-------------------------



ELEV 906	TDZE 905
----------	----------



HIRL Rwy 10R-28L 
 REIL Rwy 10L, 28R
 REIL Rwy 18, 28L, and 36 
 MIRL Rwy 10L-28R and 18-36 



CATEGORY	A	B	C	D
LPV DA		1105-½	200 (200-½)	
LNAV/VNAV DA		1237-¾	332 (400-¾)	
LNAV MDA		1280-½	375 (400-½)	1280-1 375 (400-1)
C CIRCLING	1320-1 414 (500-1)	1440-1 534 (600-1)	1440-1½ 534 (600-1½)	1540-2 634 (700-2)

NC-1, 31 JAN 2019 to 28 FEB 2019

NC-1, 31 JAN 2019 to 28 FEB 2019