

WAAS CH 42510 W10A	APP CRS 098°	Rwy Idg 3898 TDZE 906 Apt Elev 906
-------------------------------------	---------------------	---

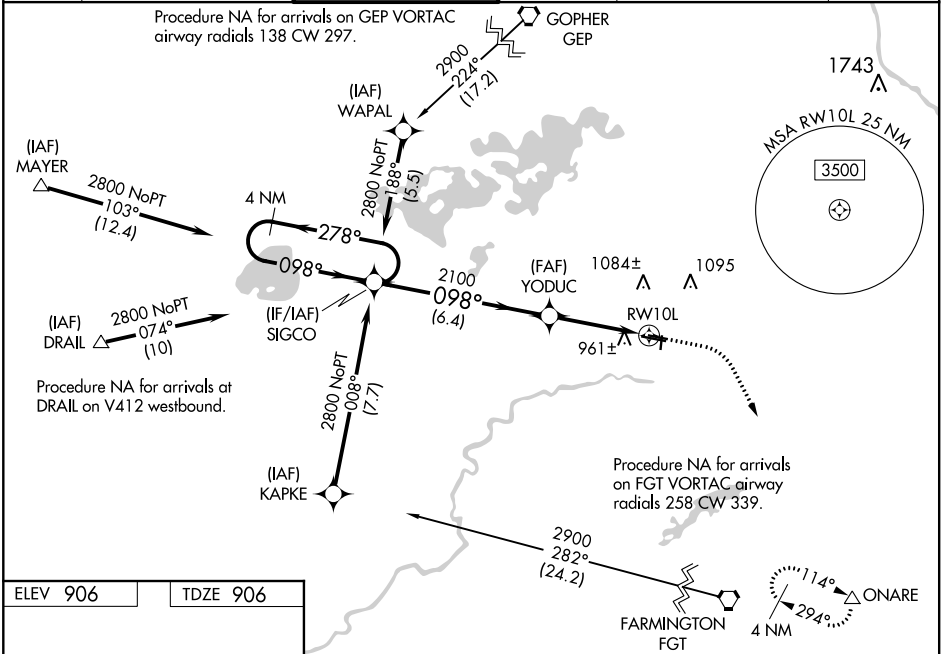
RNAV (GPS) RWY 10L

FLYING CLOUD (FCM)

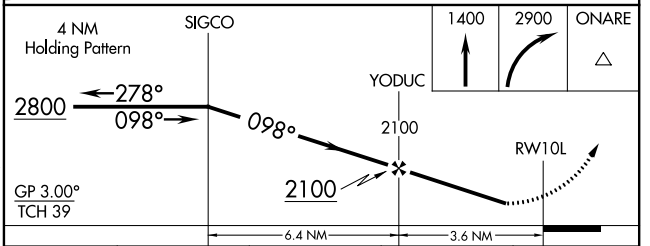
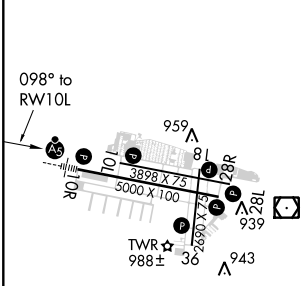
⚠ Baro-VNAV NA when using Minneapolis-St Paul Intl/Wold Chamberlain altimeter setting. For uncompensated Baro-VNAV systems, LNAV-VNAV NA below -22°C (-7°F) or above 54°C (130°F). DME/DME RNP-0.3 NA. Night Landing: Rwy 18/36 NA. When local altimeter setting not received, use Minneapolis-St Paul Intl/Wold Chamberlain altimeter setting and increase all DA 34 feet and all MDA 40 feet; increase LNAV/VNAV visibility ½ mile all Cats, and Circling Cat D ¼ mile.

⚠ MISSED APPROACH: Climb to 1400 then climbing right turn to 2900 direct ONARE and hold.

ATIS 124.9	MINNEAPOLIS APP CON 134.7 284.7	FLYING CLOUD TOWER ★ 119.15 (CTAF) 0	GND CON 121.7	MINNEAPOLIS CLNC DEL 121.7 (When tower closed)	UNICOM 122.95
-------------------	--	---	----------------------	--	----------------------



ELEV 906	TDZE 906
----------	----------



CATEGORY	A	B	C	D
LPV DA	1187-1 281 (300-1)			
LNAV/VNAV DA	1230-1 ½ 324 (400-1 ½)			
LNAV MDA	1240-1 334 (400-1)			
C CIRCLING	1320-1 414 (500-1)	1440-1 534 (600-1)	1440-1 ½ 534 (600-1 ½)	1540-2 634 (700-2)

NC-1, 31 JAN 2019 to 28 FEB 2019

NC-1, 31 JAN 2019 to 28 FEB 2019