

LOC I-FCM <b>109.7</b>	APP CRS <b>098°</b>	Rwy Idg TDZE Apt Elev	<b>5000</b> <b>905</b> <b>906</b>
---------------------------	------------------------	-----------------------------	---

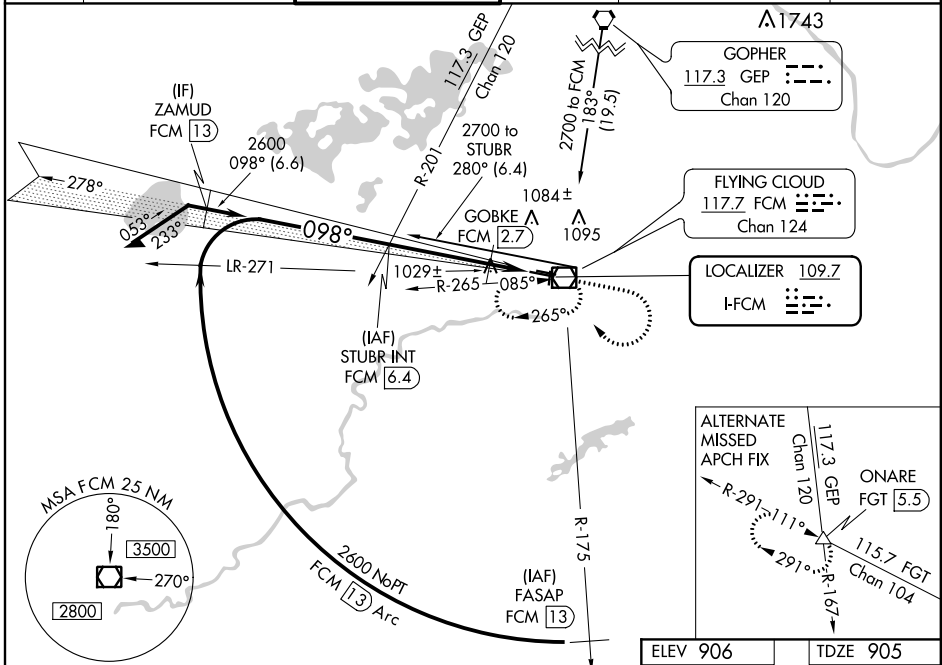
# ILS or LOC RWY 10R

FLYING CLOUD (FCM)

**⚠** When local altimeter setting not received, use Minneapolis-St Paul Intl/Wold Chamberlain altimeter setting and increase all DA 34 feet and all MDA 40 feet, increase S-LOC Cat C and D visibility ¼ mile, GOBKE fix minimums: Increase S-LOC Cat C visibility ¼ mile. Night Landing: Rwy 18/36 NA.

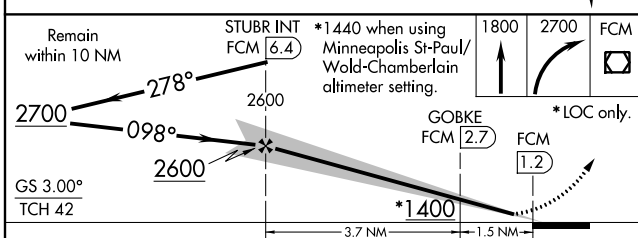
**MALSR** MISSED APPROACH: Climb to 1800 then climbing right turn to 2700 direct FCM VOR/DME and hold, continue climb-in-hold to 2700.

ATIS <b>124.9</b>	MINNEAPOLIS APP CON <b>134.7 284.7</b>	FLYING CLOUD TOWER ★ <b>119.15 (CTAF)</b>	GND CON <b>121.7</b>	MINNEAPOLIS CLNC DEL <b>121.7</b> (When tower closed)	UNICOM <b>122.95</b>
----------------------	---	--	-------------------------	---	-------------------------

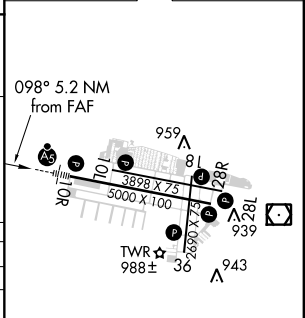


NC-1, 31 JAN 2019 to 28 FEB 2019

NC-1, 31 JAN 2019 to 28 FEB 2019



ELEV 906	TDZE 905
----------	----------



CATEGORY	A	B	C	D
S-ILS 10R		1105-½	200 (200-½)	
S-LOC 10R	1400-½	495 (500-½)	1400-¾ 495 (500-¾)	1400-1 495 (500-1)
<b>C</b> CIRCLING	1400-1 494 (500-1)	1440-1 534 (600-1)	1440-1½ 534 (600-1½)	1540-2 634 (700-2)
GOBKE FIX MINIMUMS				
S-LOC 10R		1280-½	375 (400-½)	1280-¾ 375 (400-¾)
<b>C</b> CIRCLING	1320-1 414 (500-1)	1440-1 534 (600-1)	1440-1½ 534 (600-1½)	1540-2 634 (700-2)

HIRL Rwy 10R-28L **Ⓛ**  
 REIL Rwy 10L, 28R  
 REIL Rwy 18, 28L, and 36 **Ⓛ**  
 MIRL Rwy 10L-28R and 18-36 **Ⓛ**

FAF to MAP 5.2 NM

Knots	60	90	120	150	180
Min:Sec	5:12	3:28	2:36	2:05	1:44