

COPTER ILS or LOC RWY 10R

FLYING CLOUD (FCM)

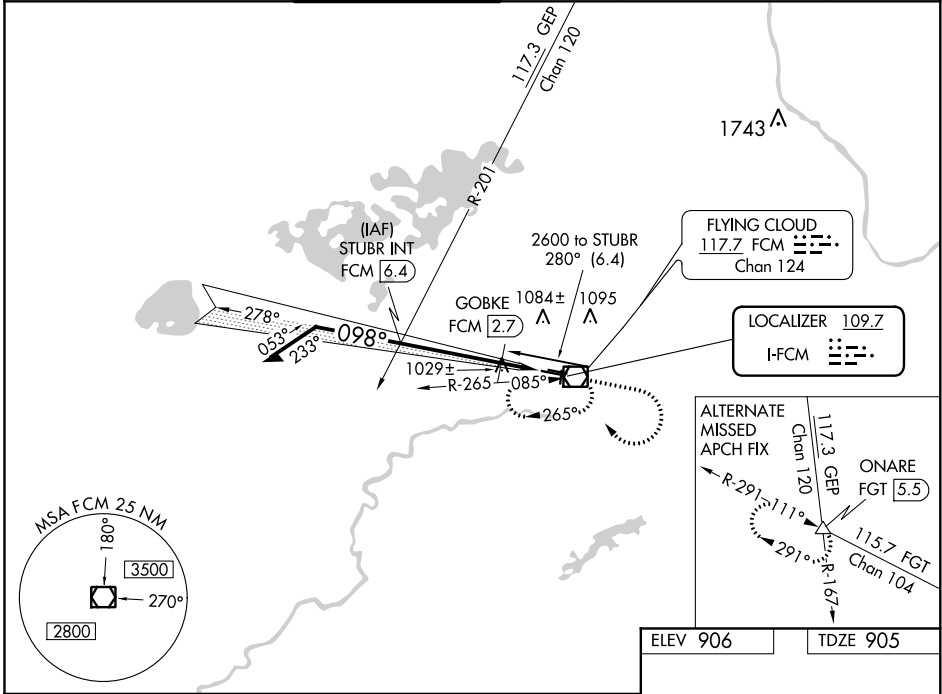
LOC I-FCM 109.7	APP CRS 098°	Rwy Idg TDZE Apt Elev	5000 905 906
---------------------------	------------------------	-----------------------------	---

▼ For inoperative MALSR, increase visibility to 1/2 mile. When local altimeter setting not received, use Minneapolis-St Paul Intl-Wold Chamberlain altimeter setting and increase DA 34 feet and all MDA 40 feet. Night Landing: Rwy 18/36 NA.

MALSR

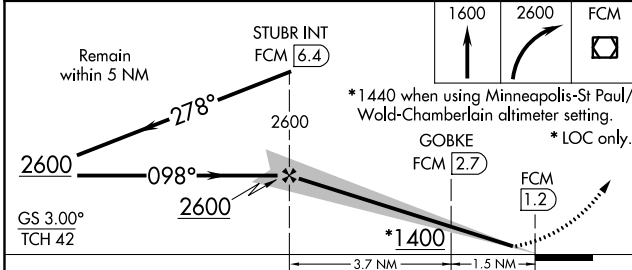
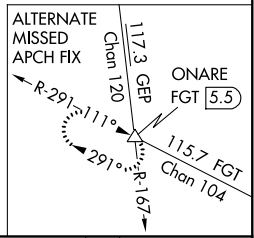
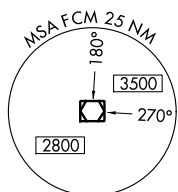
MISSED APPROACH: Climb to 1600 then climbing right turn to 2600 direct FCM VOR/DME and hold, continue climb-in-hold to 2600.

ATIS 124.9	MINNEAPOLIS APP CON 134.7 284.7	FLYING CLOUD TOWER * 119.15 (CTAF)	GND CON 121.7	MINNEAPOLIS CLNC DEL 121.7 (When tower closed)	UNICOM 122.95
----------------------	---	--	-------------------------	---	-------------------------



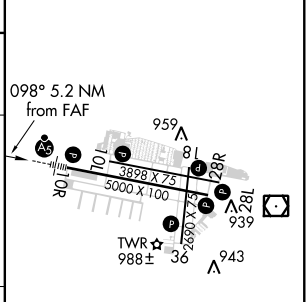
NC-1, 31 JAN 2019 to 28 FEB 2019

NC-1, 31 JAN 2019 to 28 FEB 2019



ELEV 906	TDZE 905
----------	----------

CATEGORY	COPTER	B	C	D
H-ILS 10R	1105-1/4 200 (200-1/4)		NA	
H-LOC 10R	1400-1/4 495 (500-1/4)		NA	
GOBKE FIX MINIMUMS				
H-LOC 10R	1280-1/4 375 (400-1/4)		NA	



HIRL Rwy 10R-28L					
REIL Rwys 10L, 28R					
REIL Rwys 18, 28L, and 36					
MIRL Rwys 10L-28R and 18-36					
FAF to MAP 5.2 NM					
Knots	45	60	75	90	105
Min:Sec	6:56	5:12	4:10	3:28	2:58