

APP CRS 048°	Rwy Idg 5219
	TDZE 306
	Apt Elev 306

RNAV (GPS) RWY 5

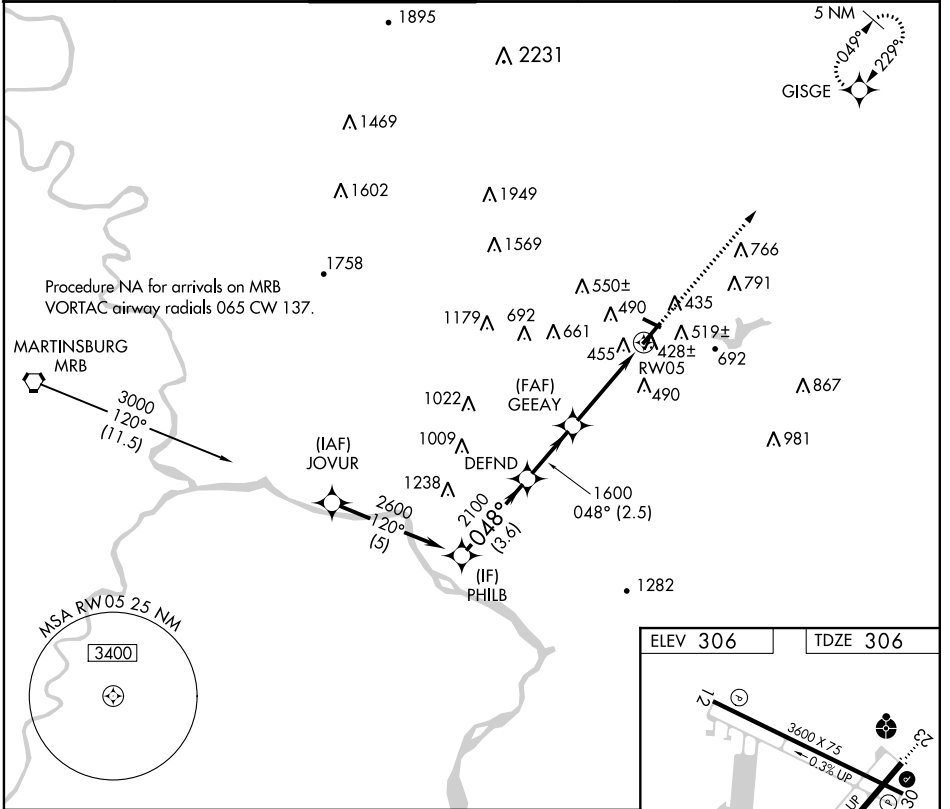
FREDERICK MUNI (F'DK)

RNP APCH.

▼ When local altimeter setting not received, use Leesburg altimeter setting and increase all MDA 80 feet; increase LNAV Cat D and Circling Cats C/D visibility ¼ mile. Circling Rwy 30 NA
▲ at night. Rwy 5 helicopter visibility reduction below ¾ SM NA.

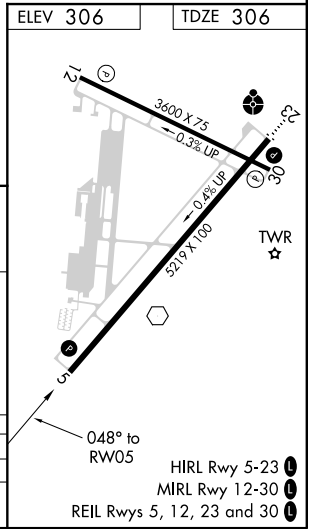
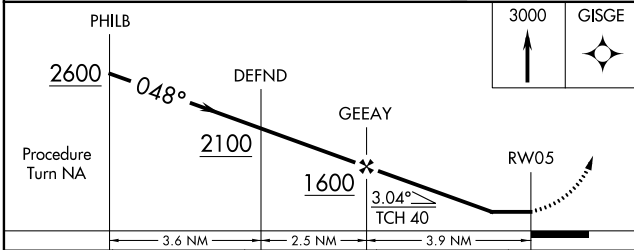
MISSED APPROACH:
Climb to 3000 direct GISGE and hold.

ATIS 124.875	POTOMAC APP CON 125.525 291.625	FREDERICK TOWER ★ 132.4 (CTAF) 0	GND CON 121.975	CLNC DEL 121.975	POTOMAC CLNC DEL 126.9 (when tower closed)	UNICOM 122.95
------------------------	---	---	---------------------------	----------------------------	---	-------------------------



NE-3, 31 JAN 2019 to 28 FEB 2019

NE-3, 31 JAN 2019 to 28 FEB 2019



CATEGORY	A	B	C	D
LNAV MDA	780-1	474 (500-1)	780-1 ³ / ₈	474 (500-1 ³ / ₈)
CIRCLING	900-1	594 (600-1)	1080-1 ¹ / ₂ 774 (800-1 ¹ / ₂)	1200-2 ¹ / ₂ 894 (900-2 ¹ / ₂)