

VOR/DME RST	APP CRS	Rwy Idg	7300
112.0	205°	TDZE	1305
Chan 57		Apt Elev	1317

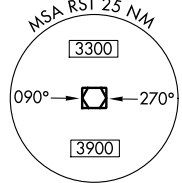
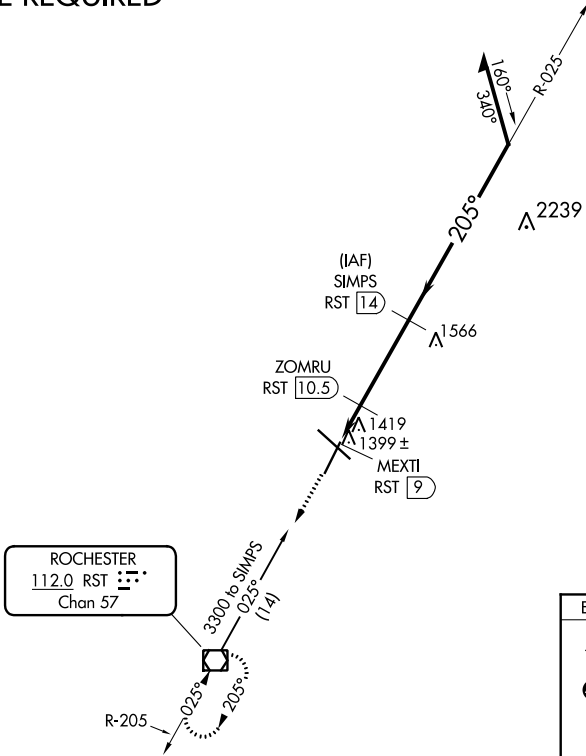
VOR RWY 20

ROCHESTER INTL (RST)

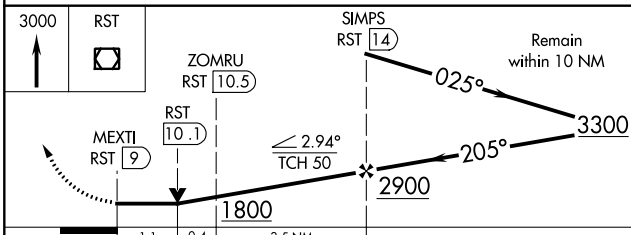
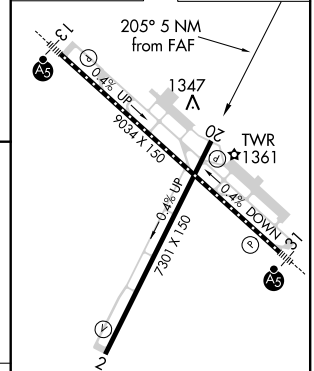
ASR	DME REQUIRED	MISSED APPROACH: Climb to 3000 direct RST VOR/DME and hold.		
-----	--------------	---	--	--

ATIS 120.5	ROCHESTER APP CON * 119.8 251.125	ROCHESTER TOWER* 118.3 (CTAF) 257.8	GND CON 121.9	UNICOM 122.95
----------------------	---	---	-------------------------	-------------------------

DME REQUIRED



ELEV 1317 **D** TDZE 1305



CATEGORY	A	B	C	D
S-20	1680-1 375 (400-1)			
CIRCLING	1720-1 403 (500-1)	1780-1 463 (500-1)	1780-1½ 463 (500-1½)	1880-2 563 (600-2)

TDZ/CL Rws 13 and 31
HIRL Rwy 13-31
MIRL Rwy 2-20
REIL Rws 2 and 20

NC-1, 31 JAN 2019 to 28 FEB 2019

NC-1, 31 JAN 2019 to 28 FEB 2019