

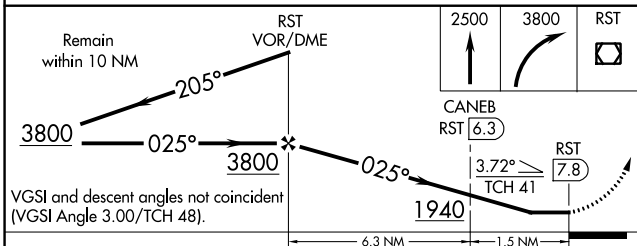
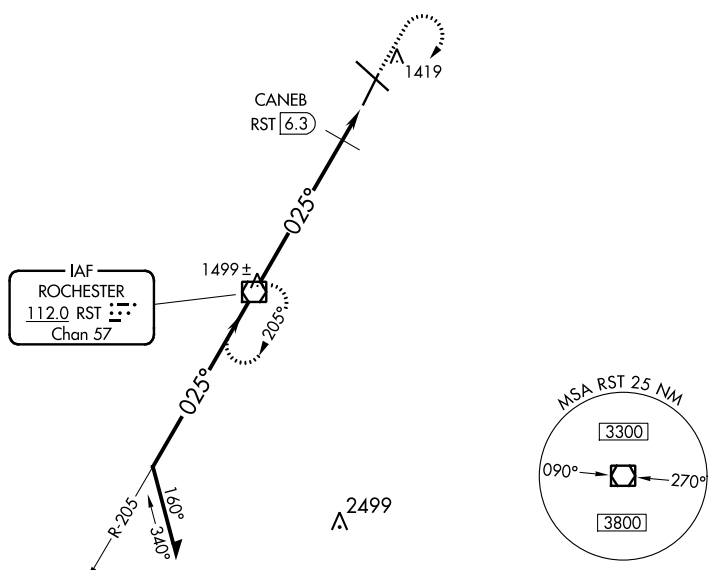
VOR/DME RST	APP CRS	Rwy Idg	<b>7300</b>
<b>112.0</b>	<b>025°</b>	TDZE	<b>1317</b>
Chan <b>57</b>		Apt Elev	<b>1317</b>

# VOR RWY 2

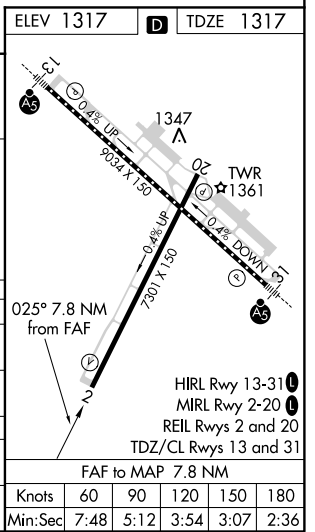
ROCHESTER INTL (RST)

ASR MISSED APPROACH: Climb to 2500 then climbing right turn to 3800 direct RST VOR/DME and hold.

ATIS <b>120.5</b>	ROCHESTER APP CON ★ <b>119.8 251.125</b>	ROCHESTER TOWER ★ <b>118.3 (CTAF) 257.8</b>	GND CON <b>121.9</b>	UNICOM <b>122.95</b>
----------------------	---	--	-------------------------	-------------------------



CATEGORY	A	B	C	D
S-2	1940-1	623 (700-1)	1940-1¾ 623 (700-1¾)	1940-2 623 (700-2)
CIRCLING	1940-1	623 (700-1)	1940-1¾ 623 (700-1¾)	1940-2 623 (700-2)
DME MINIMUMS				
S-2	1680-1 363 (400-1)		NA	
CIRCLING	1720-1 403 (500-1)	1780-1 463 (500-1)	1780-1½ 463 (500-1½)	1880-2 563 (600-2)



NC-1, 31 JAN 2019 to 28 FEB 2019

NC-1, 31 JAN 2019 to 28 FEB 2019