

WAAS CH <b>57922</b> <b>W20A</b>	APP CRS <b>206°</b>	Rwy Idg TDZE Apt Elev	<b>7300</b> <b>1305</b> <b>1317</b>
--	------------------------	-----------------------------	---

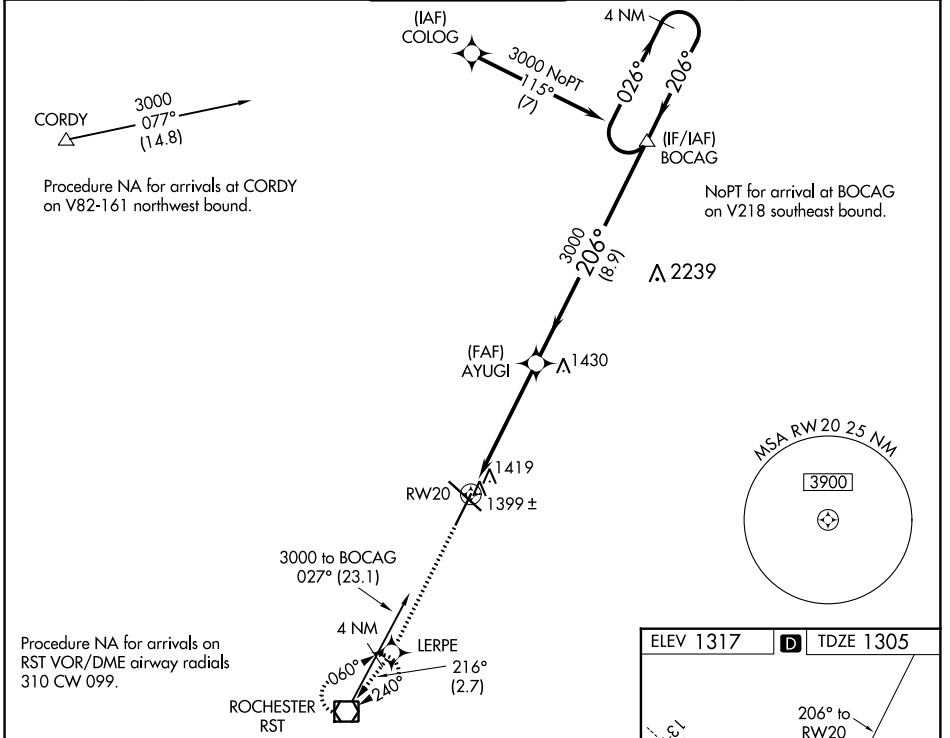
# RNAV (GPS) RWY 20

ROCHESTER INTL (RST)

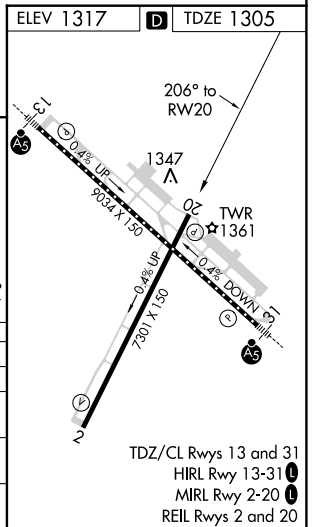
**ASR** For uncompensated Baro-VNAV systems, LNAV/VNAV NA below -28°C (-18°F) or above 35°C (95°F). When VGSI inop, Straight-in/Circling Rwy 20 procedure NA at night. DME/DME RNP-0.3 NA. Visibility reduction by helicopters NA.

**MISSED APPROACH:** Climb to 3000 direct LERPE on track 216° to RST VOR/DME and hold.

ATIS <b>120.5</b>	ROCHESTER APP CON ★ <b>119.8 251.125</b>	ROCHESTER TOWER ★ <b>118.3 (CTAF) 0 257.8</b>	GND CON <b>121.9</b>	UNICOM <b>122.95</b>
----------------------	---	--	-------------------------	-------------------------



3000	LERPE	tr 216°	RST	VGSI and RNAV glidepath not coincident (VGSI Angle 3.05/TCH 50).			
↑	☉		☐	AYUGI	BOCAG	4 NM Holding Pattern	
				3000	3000	3000	
				206°	026°	206°	
				5.2 NM	8.9 NM		
CATEGORY	A	B	C	D			
LPV DA		1555-1	250 (300-1)				
LNAV/VNAV DA		1603-1	298 (300-1)				
LNAV MDA		1660-1	355 (400-1)				
CIRCLING	1720-1 403 (500-1)	1780-1 463 (500-1)	1780-1½ 463 (500-1½)	1880-2 563 (600-2)			



NC-1, 31 JAN 2019 to 28 FEB 2019

NC-1, 31 JAN 2019 to 28 FEB 2019