

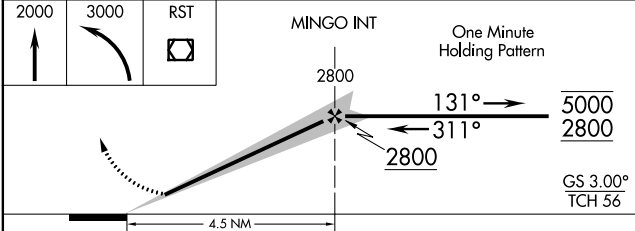
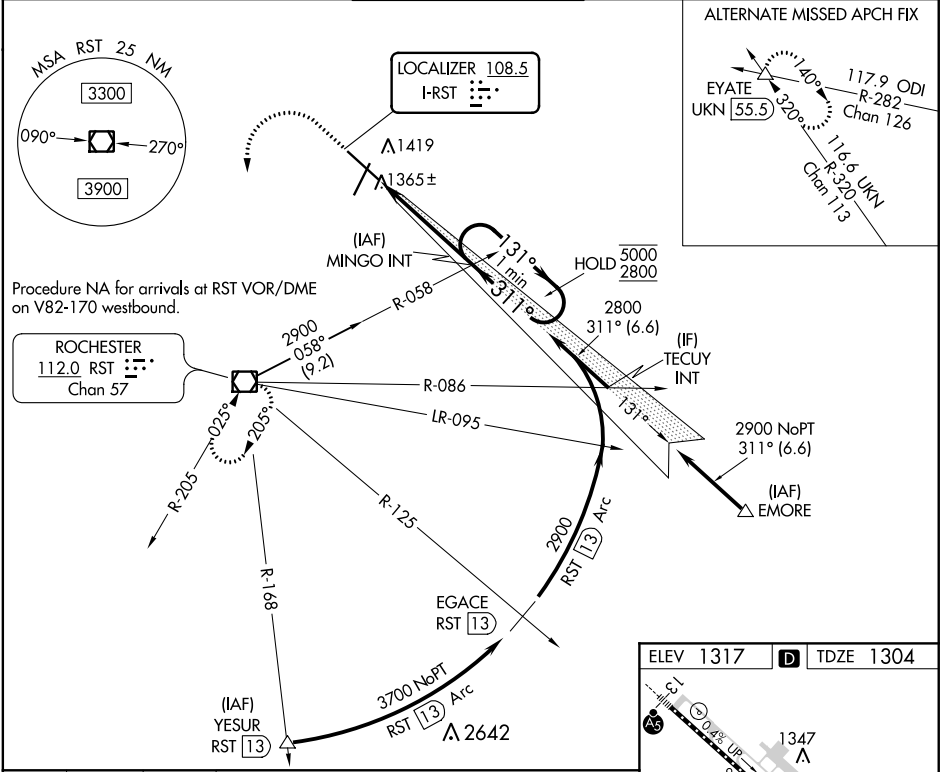
LOC I-RST 108.5	APP CRS 311°	Rwy Idg 9033
		TDZE 1304
		Apt Elev 1317

ILS Z or LOC Z RWY 31

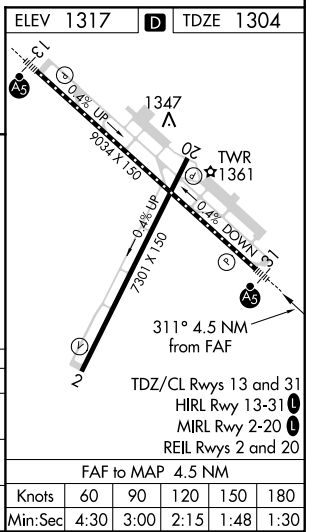
ROCHESTER INTL (RST)

For inop ALS, increase S-LOC 31 Cat C/D visibility to RVR 5500.	MALSR	MISSED APPROACH: Climb to 2000 then climbing left turn to 3000 direct RST VOR/DME and hold.
---	-------	---

ATIS 120.5	ROCHESTER APP CON* 119.8 251.125	ROCHESTER TOWER* 118.3 (CTAF) 257.8	GND CON 121.9	UNICOM 122.95
----------------------	--	---	-------------------------	-------------------------



CATEGORY	A	B	C	D
S-ILS 31	1504/18		200 (200-½)	
S-LOC 31	1620/24		316 (400-½)	
CIRCLING	1720-1 403 (500-1)	1780-1 463 (500-1)	1900-1½ 583 (600-½)	1900-2 583 (600-2)



NC-1, 31 JAN 2019 to 28 FEB 2019

NC-1, 31 JAN 2019 to 28 FEB 2019