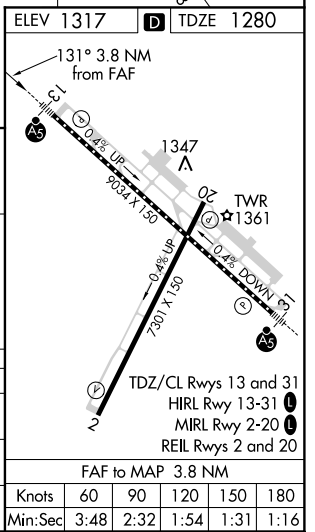
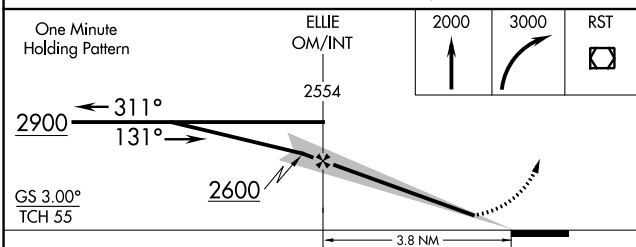
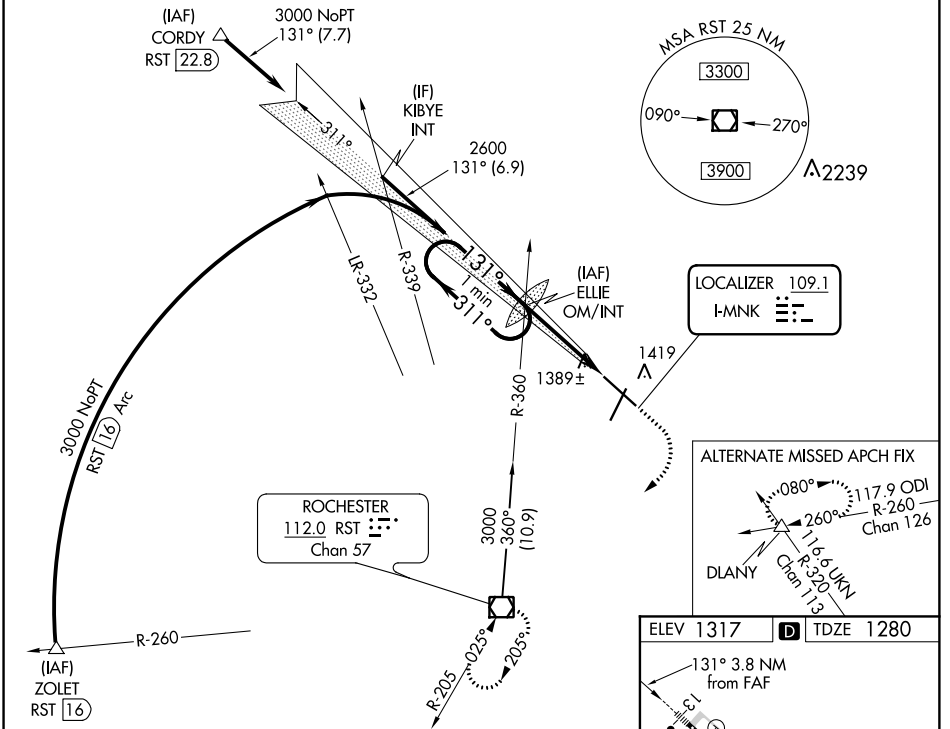


LOC I-MNK 109.1	APP CRS 131°	Rwy Idg TDZE Apt Elev	9033 1280 1317
---------------------------	------------------------	-----------------------------	-------------------------------------------

ILS or LOC RWY 13

ROCHESTER INTL (RST)

 ASR	 MALSR	MISSED APPROACH: Climb to 2000 then climbing right turn to 3000 direct RST VOR/DME and hold.		
		ATIS 120.5	ROCHESTER APP CON* 119.8 251.125	ROCHESTER TOWER* 118.3 (CTAF) 257.8
		UNICOM 122.95		



CATEGORY	A	B	C	D
S-ILS 13	1480/18 200 (200-½)			
S-LOC 13	1640/24 360 (400-½)		1640/40 360 (400-¾)	
CIRCLING	1720-1 403 (500-1)	1780-1 463 (500-1)	1780-1½ 463 (500-1½)	1880-2 563 (600-2)

FAF to MAP 3.8 NM					
Knots	60	90	120	150	180
Min:Sec	3:48	2:32	1:54	1:31	1:16

NC-1, 31 JAN 2019 to 28 FEB 2019

NC-1, 31 JAN 2019 to 28 FEB 2019