

TACAN Y RWY 30

TACAN MIB Chan 96	APCH CRS 292°	Rwy ldg 13,198 TDZE 1646 Arprt Elev 1666
-----------------------------	-------------------------	---

AL-5013 [USAF]

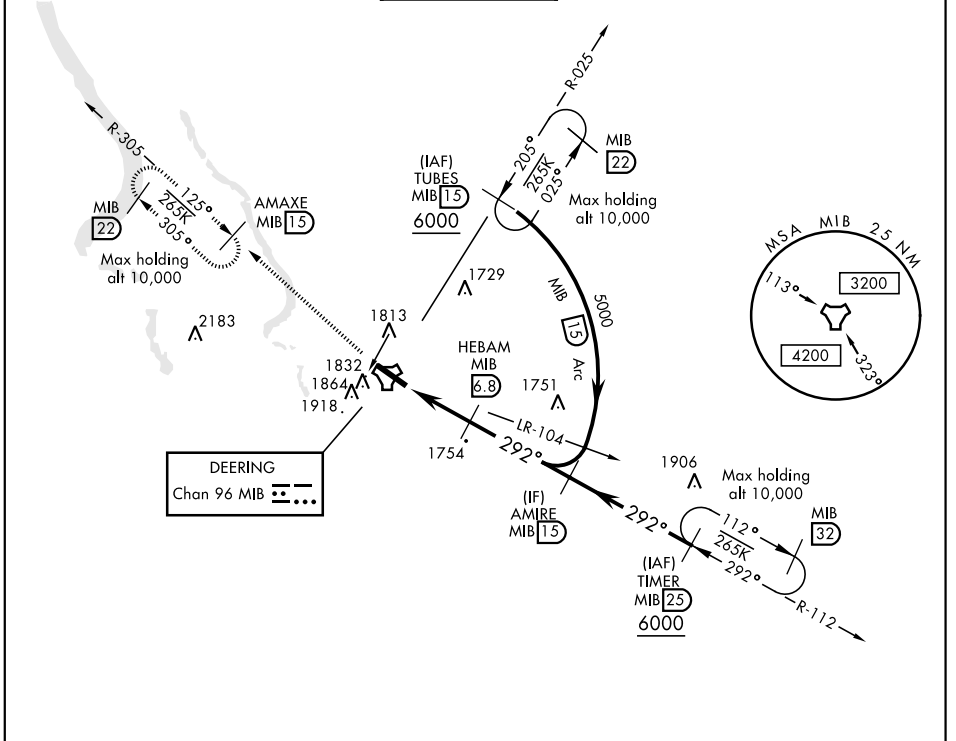
MINOT AFB (KMIB)

* When ALS inop, increase CAT AB RVR to 55 and vis to 1 mile, CAT CDE vis to 1 3/8 miles.
** Circling not authorized N of Rwy 12-30



MISSED APPROACH: Climb to 5000 via MIB TACAN R-305 direct AMAXE and hold.

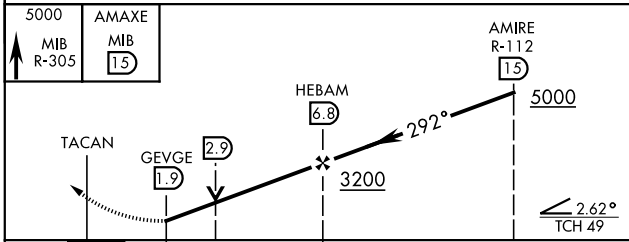
ATIS ★ 278.8	MINOT APP CON 119.6 363.8	MINOT TOWER ★ 120.65 253.5	GND CON 134.0 275.8	CLNC DEL 326.2
------------------------	-------------------------------------	--------------------------------------	-------------------------------	--------------------------



NC-1, 31 JAN 2019 to 28 FEB 2019

NC-1, 31 JAN 2019 to 28 FEB 2019

EMERG SAFE ALT 100 NM 4700



ELEV 1666	TDZE 1646
-----------	-----------

13,198-300
TWR 1776
1847
1769
292° 5.5 NM from FAF

CATEGORY	A	B	C	D	E
S-30 *	2100/24 454 (500-1/2)		2100/45 454 (500-3/4)		
CIRCLING **	2120-1 454 (500-1)	2140-1 474 (500-1)	2180-1 1/2 514 (600-1 1/2)	2220-2 554 (600-2)	

TACAN Y RWY 30