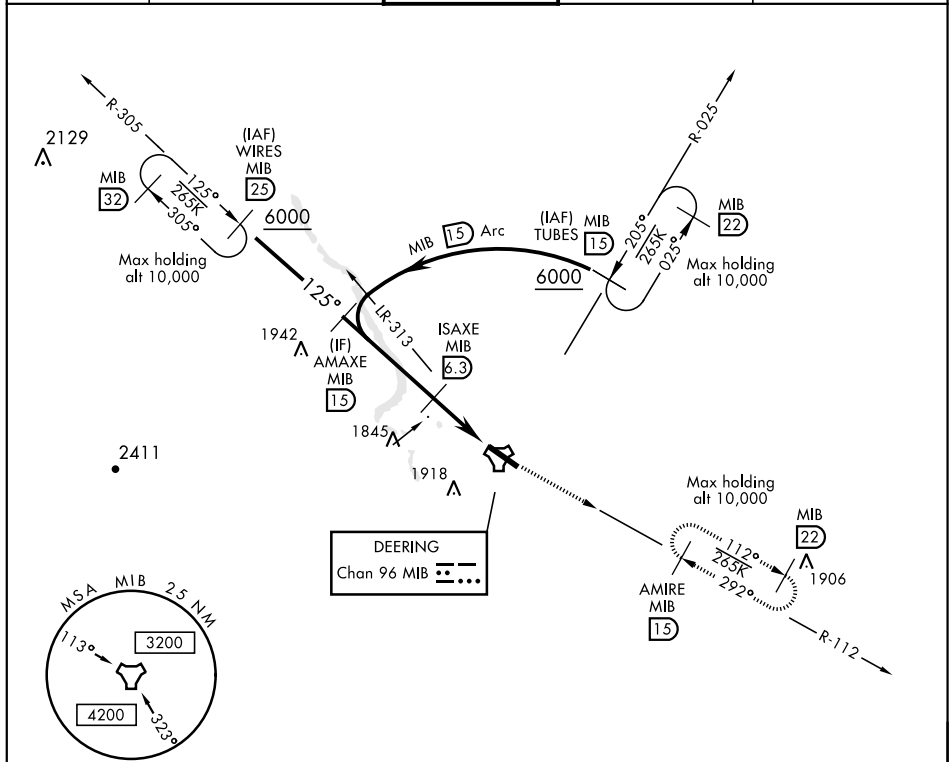


MINOT, NORTH DAKOTA

TACAN Y RWY 12

TACAN MIB Chan 96	APCH CRS 125°	Rwy Idg 13,198 TDZE 1666 Arprt Elev 1666	AL-5013 [USAF]	MINOT AFB (KMIB)
* When ALS inop, increase CAT AB RVR to 55 vis to 1 mile, CAT CDE vis to 1¼ miles.			ALS-F1 	MISSED APPROACH: Climb to 5000 via MIB TACAN R-112 direct AMIRE and hold.
** Circling not authorized N of Rwy 12-30.				

ATIS ★ 278.8	MINOT APP CON 119.6 363.8	MINOT TOWER ★ 120.65 253.5	GND CON 134.0 275.8	CLNC DEL 326.2
------------------------	-------------------------------------	--------------------------------------	-------------------------------	--------------------------



EMERG SAFE ALT 100 NM 4700

	5000	ISAXE MIB 6.3	TACAN	GAVGE MIB 1.5	AMIRE MIB 15	ELEV 1666	TDZE 1666
5000	125°	3200	4.8 NM	0.6	MIB R-112		
2.57°							
TCH 47							

CATEGORY	A	B	C	D	E
S-12*	2100/24	434 (500-½)	2100/40	434	(500-¾)
CIRCLING**	2120-1 454 (500-1)	2140-1 474 (500-1)	2180-1½ 514 (600-1½)	2220-2	554 (600-2)

HIRL RWY 12-30
TWR 1776
125° to TACAN
1.3 192 x 300

MINOT, NORTH DAKOTA 48°25'N-101°21'W MINOT AFB (KMIB)

Orig 21JUL16

TACAN Y RWY 12

NC-1, 31 JAN 2019 to 28 FEB 2019

NC-1, 31 JAN 2019 to 28 FEB 2019