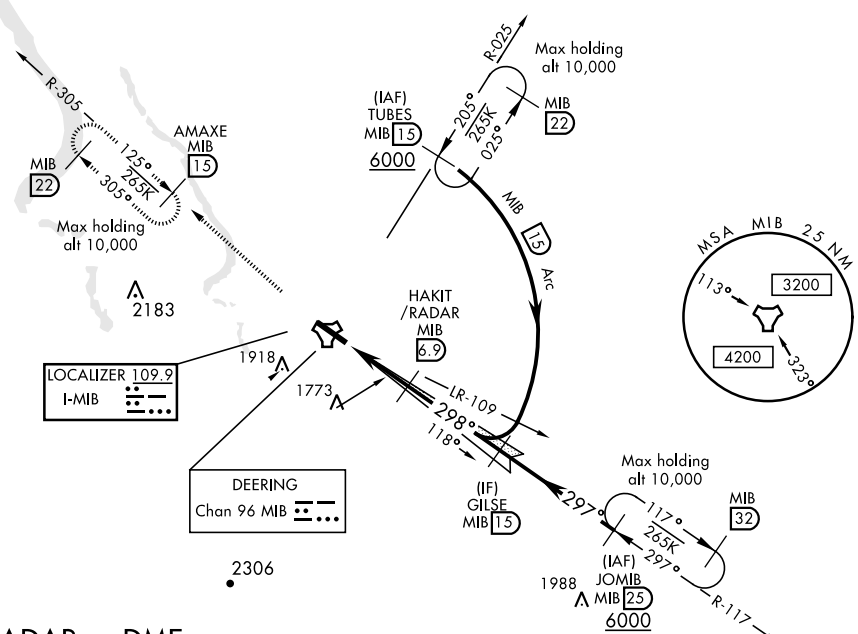


MINOT, NORTH DAKOTA

ILS or LOC Y RWY 30

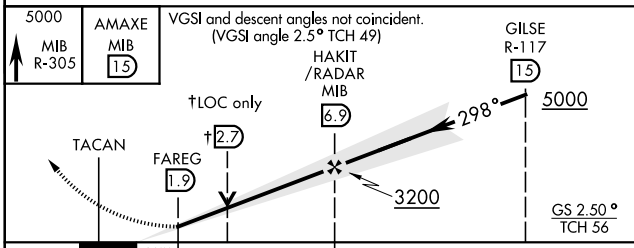
LOC I-MIB 109.9	APCH CRS 298°	Rwy Idg 13,198 TDZE 1646 Arpt Elev 1666	AL-5013 [USAF]	MINOT AFB (KMIB)
* When ALS inop, increase CAT ABCDE RVR to 40 and vis to 3/4 mile. ** When ALS inop, increase CAT AB RVR to 55 and vis to 1 mile, CAT CDE RVR to 60 and vis to 1 1/8 miles.			ALSF-1 	MISSED APPROACH: Climb to 5000 via MIB TACAN R-305 direct AMAXE and hold.
ATIS ★ 278.8	MINOT APP CON 119.6 363.8	MINOT TOWER ★ 120.65 253.5	GND CON 134.0 275.8	CLNC DEL 326.2

*** Circling not authorized N of Rwy 12-30.



RADAR or DME REQUIRED

EMERG SAFE ALT 100 NM 4700



ELEV 1666	TDZE 1646
HIRL Rwy 12-30	
FAF to MAP 5.0 NM	
Knots	60 90 120 150 180
Min:Sec	5:00 3:20 2:30 2:00 1:40

CATEGORY	A	B	C	D	E
S-ILS 30 *	1846/24		200	(200-1/2)	
S-LOC 30 **	2040/24	394 (400-1/2)	2040/35	394	(400-3/4)
CIRCLING ***	2120-1 454 (500-1)	2140-1 474 (500-1)	2180-1 1/2 514 (600-1 1/2)	2220-2	554 (600-2)

MINOT, NORTH DAKOTA
Orig 30MAR17

48° 25' N - 101° 21' W

MINOT AFB (KMIB)

ILS or LOC Y RWY 30

NC-1, 31 JAN 2019 to 28 FEB 2019

NC-1, 31 JAN 2019 to 28 FEB 2019