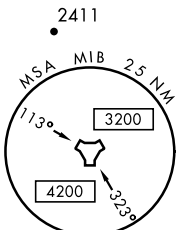
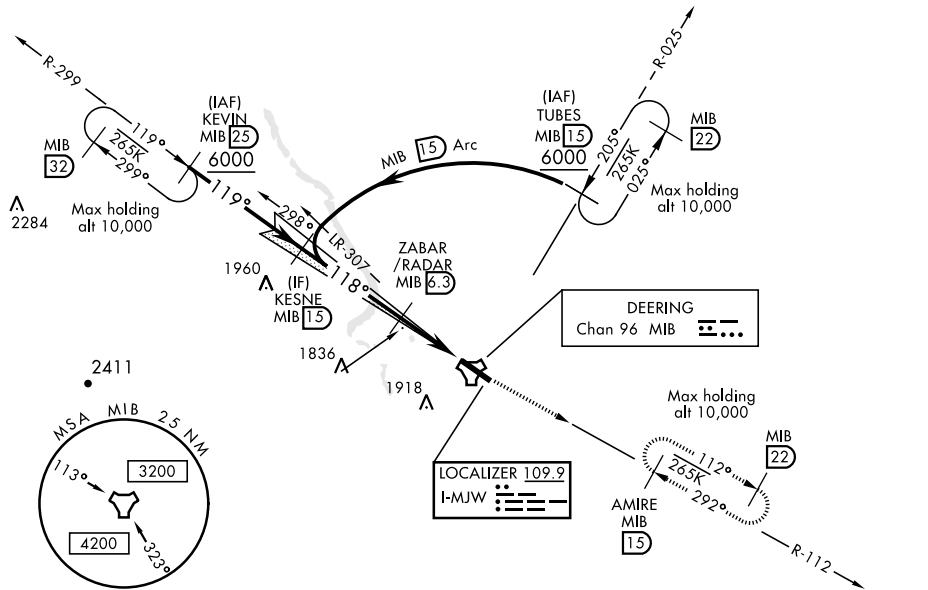


MINOT, NORTH DAKOTA

# ILS or LOC Y RWY 12

LOC I-MJW <b>109.9</b>	APCH CRS <b>118°</b>	Rwy Idg <b>13,198</b> TDZE <b>1666</b> Arprt Elev <b>1666</b>	AL-5013 [USAF]	MINOT AFB (KMIB)
* When ALS inop, increase RVR to 40 and vis to ¾ mile. ** When ALS inop, increase CAT AB RVR to 55 and vis to 1 mile, CAT CDE vis to 1¼ miles.			ALSF-1 	MISSED APPROACH: Climb to 5000 via MIB TACAN R-112 direct AMIRE and hold.
ATIS * <b>278.8</b>	MINOT APP CON <b>119.6 363.8</b>	MINOT TOWER * <b>120.65 253.5</b>	GND CON <b>134.0 275.8</b>	CLNC DEL <b>326.2</b>

\*\*\* Circling not authorized N of Rwy 12-30.



## RADAR or DME REQUIRED

EMERG SAFE ALT 100 NM 4700

KESNE MIB R-299		VGSIs and descent angles not coincident. (VGSi angle 2.5° TCH 48)		5000 MIB R-112	AMIRE MIB 15	118° 5.5 NM from FAF
5000		ZABAR/RADAR MIB 6.3		↑ LOC only		
GS 2.50° TCH 54		3200		↑ 2.3		
		4.9 NM		0.6		
CATEGORY	A	B	C	D	E	
S-ILS 12*	1866/24		200	(200-½)		
S-LOC 12**	2100/24	434 (500-½)	2100/40	434	(500-¾)	
CIRCLING ***	2120-1 454 (500-1)	2140-1 474 (500-1)	2180-1½ 514 (600-1½)	2220-2	554 (600-2)	
HIRL Rwy 12-30						
FAF to MAP 4.9 NM						
Knots		60	90	120	150	180
Min:Sec		4:54	3:16	2:27	1:58	1:38

MINOT, NORTH DAKOTA  
Orig 30MAR17

48°25'N-101°21'W

MINOT AFB (KMIB)

# ILS or LOC Y RWY 12

NC-1, 31 JAN 2019 to 28 FEB 2019

NC-1, 31 JAN 2019 to 28 FEB 2019