

# HI-TACAN Z RWY 30

TACAN MIB Chan <b>96</b>	APCH CRS <b>292°</b>	Rwy Idg <b>13,198</b> TDZE <b>1646</b> Arprt Elev <b>1666</b>
-----------------------------	-------------------------	---------------------------------------------------------------------

JAL-5013 [USAF]

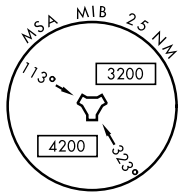
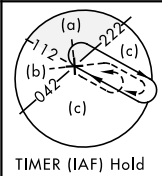
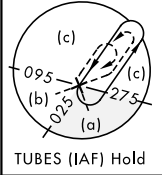
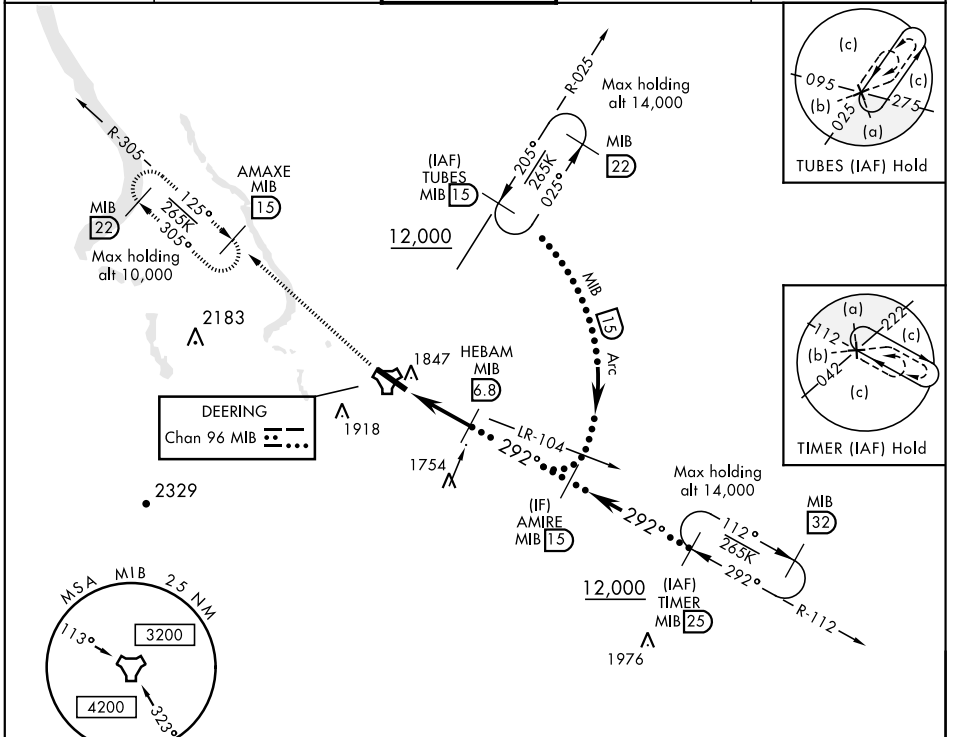
MINOT AFB (KMIB)

\* When ALS inop, increase CAT CDE vis to 1 3/8 miles.  
 \*\* Circling not authorized N of Rwy 12-30.



MISSED APPROACH: Climb to 5000 via MIB TACAN R-305 direct AMAXE and hold.

ATIS ★ <b>278.8</b>	MINOT APP CON <b>119.6 363.8</b>	MINOT TOWER ★ <b>120.65 253.5</b>	GND CON <b>134.0 275.8</b>	CLNC DEL <b>326.2</b>
------------------------	-------------------------------------	--------------------------------------	-------------------------------	--------------------------

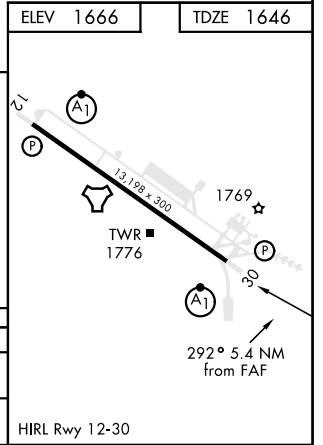


NC-1, 31 JAN 2019 to 28 FEB 2019

NC-1, 31 JAN 2019 to 28 FEB 2019

EMERG SAFE ALT 100 NM 4700

5000 MIB R-305	AMAXE MIB 15	HEBAM 6.8	AMIRE R-112 15
TACAN	GEVGE 1.9	2.9	3200
0.5 NM	4.9 NM		
CATEGORY	C	D	E
S-30*	2100/45 454 (500-7/8)		
CIRCLING**	2180-1 1/2 514 (600-1 1/2)	2220-2 554 (600-2)	



# HI-TACAN Z RWY 30