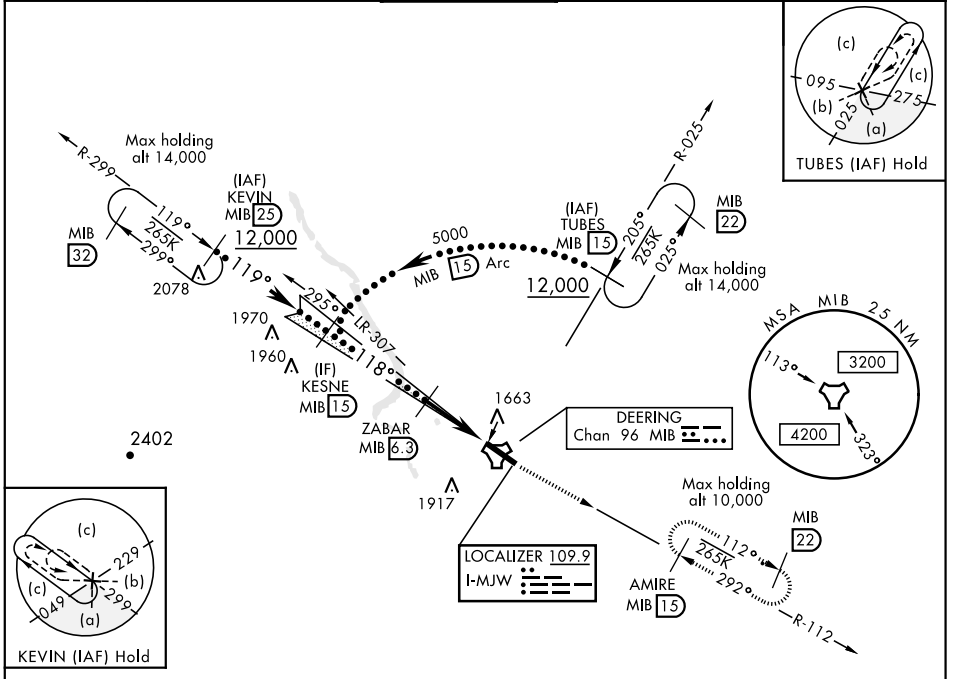


# HI-ILS or LOC Z RWY 12

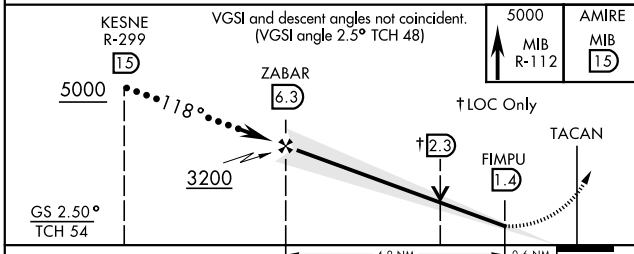
LOC I-MJW <b>109.9</b>	APCH CRS <b>118°</b>	Rwy Idg <b>13,198</b> TDZE <b>1666</b> Arpt Elev <b>1666</b>	JAL-5013 [USAF]	MINOT AFB (KMIB)
* When ALS inop, increase CAT CDE RVR to 40 and vis to ¾ mile. ** When ALS inop, increase CAT CDE vis to 1¼ mile, *** Circling not authorized N of Rwy 12-30.			ALSF-1 	MISSED APPROACH: Climb to 5000 via MIB TACAN R-112 direct AMIRE and hold.

ATIS ★ <b>278.8</b>	MINOT APP CON <b>119.6 363.8</b>	MINOT TOWER ★ <b>120.65 253.5</b>	GND CON <b>134.0 275.8</b>	CLNC DEL <b>326.2</b>
------------------------	-------------------------------------	--------------------------------------	-------------------------------	--------------------------



## RADAR or DME REQUIRED

EMERG SAFE ALT 100 NM 4700



ELEV 1666	TDZE 1666
118° 5.5 NM from FAF	
1769	
1740 1728 1847	
TWR 1776	
HIRL Rwy 12-30	
FAF to MAP 4.9 NM	
Knots	120 140 160 180 200
Min:Sec	2:27 2:06 1:50 1:38 1:28

CATEGORY	C	D	E		
S-ILS 12*	1866/24	200	(200-½)		
S-LOC 12**	2100/40	434	(500-¾)		
CIRCLING ***	2180-1½ 514 (600-1½)	2220-2	554 (600-2)		

# HI-ILS or LOC Z RWY 12

NC-1, 31 JAN 2019 to 28 FEB 2019

NC-1, 31 JAN 2019 to 28 FEB 2019