

MINOT, NORTH DAKOTA

# COPTER TACAN 125°

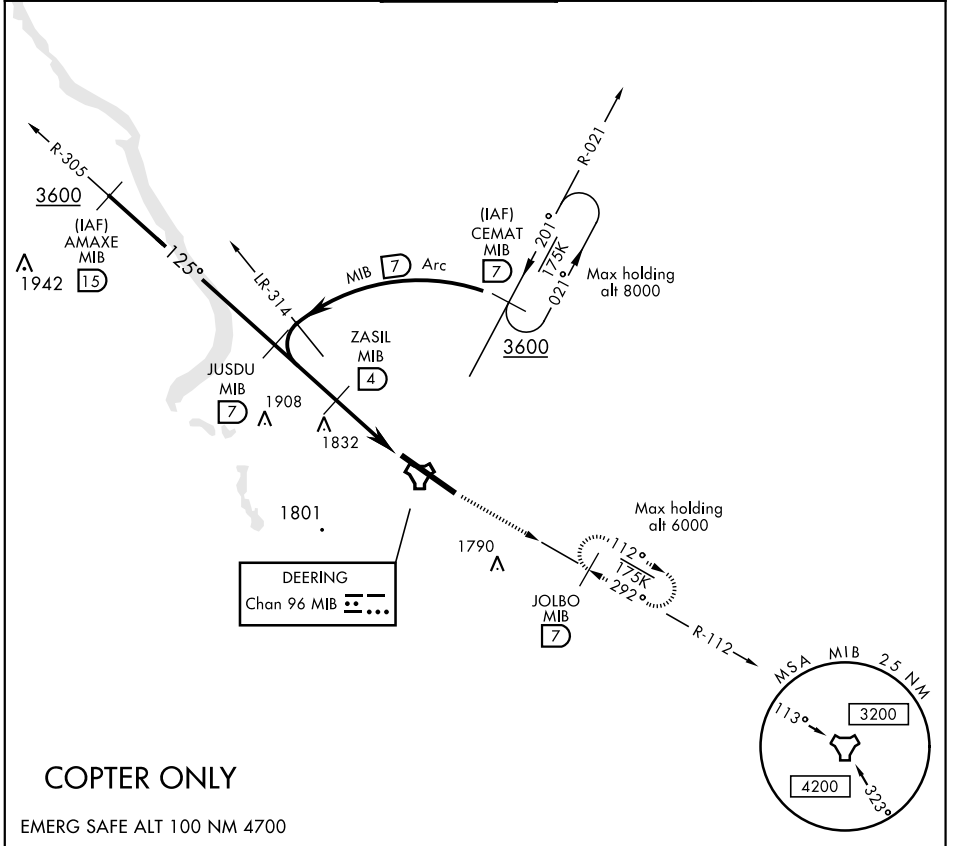
TACAN MIB Chan <b>96</b>	APCH CRS <b>125°</b>	Rwy ldg <b>13,198</b> TDZE <b>1666</b> Arprt Elev <b>1666</b>
-----------------------------	-------------------------	---

AL-5013 [USAF]

MINOT AFB (KMIB)

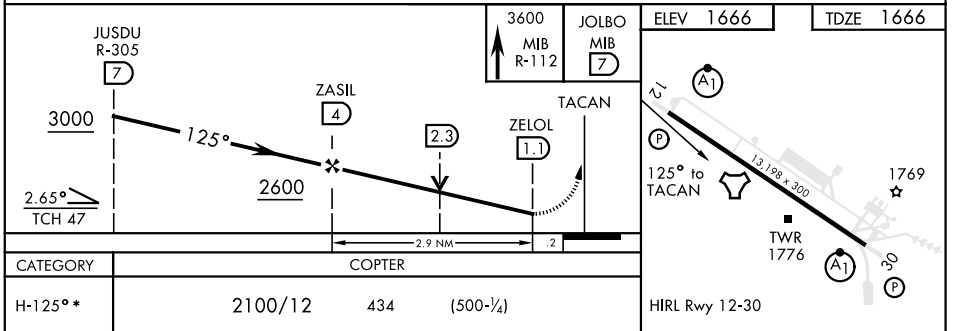
* When ALS inop, increase RVR to 28 and vis to 1/2 mile.	ALSF-1 	MISSED APPROACH: Climb to 3600 via MIB TACAN R-112 direct JOLBO and hold.
--	------------	---

ATIS ★ <b>278.8</b>	MINOT APP CON <b>119.6 363.8</b>	MINOT TOWER ★ <b>120.65 253.5</b>	GND CON <b>134.0 275.8</b>	CLNC DEL <b>326.2</b>
------------------------	-------------------------------------	--------------------------------------	-------------------------------	--------------------------



## COPTER ONLY

EMERG SAFE ALT 100 NM 4700



MINOT, NORTH DAKOTA

48°25'N-101°21'W

MINOT AFB (KMIB)

Orig 21JUL16

# COPTER TACAN 125°

NC-1, 31 JAN 2019 to 28 FEB 2019

NC-1, 31 JAN 2019 to 28 FEB 2019