

MINOT, NORTH DAKOTA

COPTER RNAV (GPS) RWY 30

WAAS CH 91355 W30A	APCH CRS 298°	Rwy ldg 13,198	TDZE 1646
		Arprt Elev 1666	

AL-5013 (USAF)

MINOT AFB (KMIB)

* When ALS inop, increase CAT A RVR to 40, vis to 3/4 mile.
 ** When ALS inop, increase CAT A vis to 1 5/8 miles.
 *** When ALS inop, increase CAT A RVR to 55, vis to 1 mile.



MISSED APPROACH: Climb to 2100 then climbing right turn to 3600 direct JUSDU and hold, continue climb-in-hold to 3600.

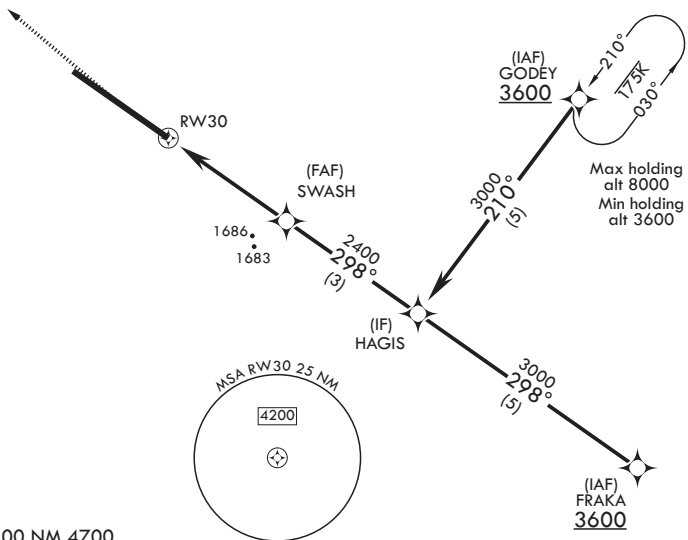
ATIS* 278.8	APP CON 119.6 363.8	TOWER* 120.65 253.5	GND CON 134.0 275.8	CLNC DEL 326.2
----------------	------------------------	------------------------	------------------------	-------------------

****Circling NA
NE of Rwy 12-30.



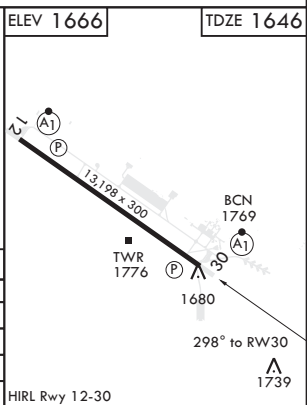
For uncompensated Baro-VNAV systems, procedure NA below 12°C (54°F) or above 54°C (130°F).

Max holding alt 6000
Min holding alt 3600



1874
EMERG SAFE ALT 100 NM 4700

2100	3600	JUSDU	HAGIS	ELEV 1666	TDZE 1646
↑	↪	⊙			
† LNAV only					
RWY 30			SWASH	3000	
↑ 1.3 NM to RWY 30			298°		
2.7 NM			2400		
			GP 2.50°		
			TCH 49		
CATEGORY	COPTER				
LPV DA*	1846/24	200	(200-1/4)		
LNAV/VNAV DA**	2040/60	394	(400-1 1/8)		
LNAV MDA***	2040/24	394	(400-1/2)		
C CIRCLING****	2120-1	454	(500-1)		



MINOT, NORTH DAKOTA

48°25'N - 101°21'W

MINOT AFB (KMIB)

Orig 19JUL18

COPTER RNAV (GPS) RWY 30

NC-1, 31 JAN 2019 to 28 FEB 2019

NC-1, 31 JAN 2019 to 28 FEB 2019