

# RNAV (GPS) RWY 35

APCH CRS <b>354°</b>	Rwy Idg <b>12,351</b> TDZE <b>911</b> Arprt Elev <b>911</b>
-------------------------	---

AL-5010 [USAF]

GRAND FORKS AFB (KRDR)

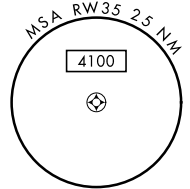
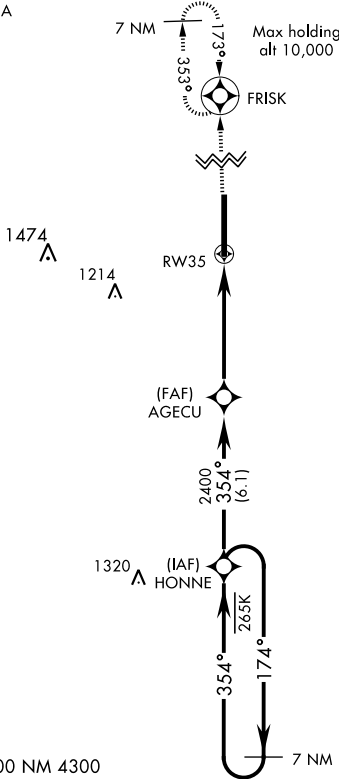
\* When ALS inop, increase CAT AB RVR to 55 and vis to 1 mile, CAT CDE vis to 1 3/8 miles.  
\*\* Circling E of Rwy 17-35 not authorized.



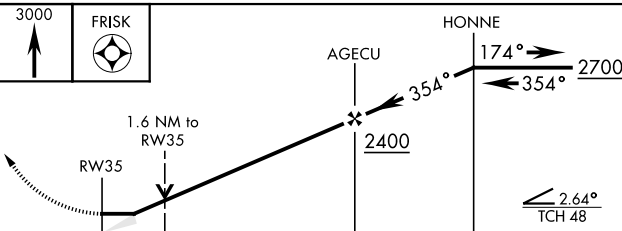
MISSED APPROACH: Climb to 3000 direct FRISK and hold.

ATIS <b>273.45</b>	GRAND FORKS APP CON <b>118.1 318.1</b>	RED RIVER TOWER <b>124.9 349.0</b>	GND CON <b>119.15 275.8</b>	CLNC DEL <b>119.15 360.7</b>
-----------------------	---	---------------------------------------	--------------------------------	---------------------------------

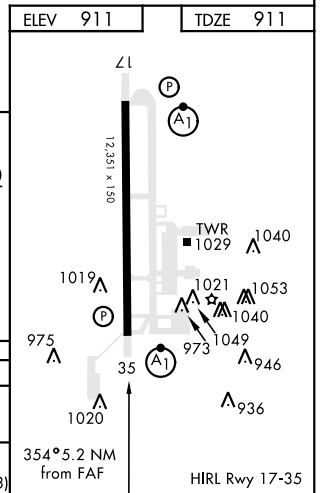
DME/DME RNP - 0.3 NA



EMERG SAFE ALT 100 NM 4300



CATEGORY	A	B	C	D	E
LNAV MDA *	1400/24	489 (500-1/2)	1400/50	489	(500-1)
CIRCLING **	1400-1	489 (500-1)	1400-1 1/2 489 (500-1 1/2)	1480-2 569 (600-2)	2040-3 1129 (1200-3)



# RNAV (GPS) RWY 35

NC-1, 31 JAN 2019 to 28 FEB 2019

NC-1, 31 JAN 2019 to 28 FEB 2019