

LOC/DME I-TMN 110.1 Chan 38	APP CRS 100°	Rwy Idg 7000 TDZE 24 Apt Elev 24
---	------------------------	---

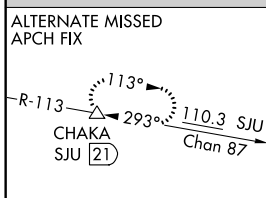
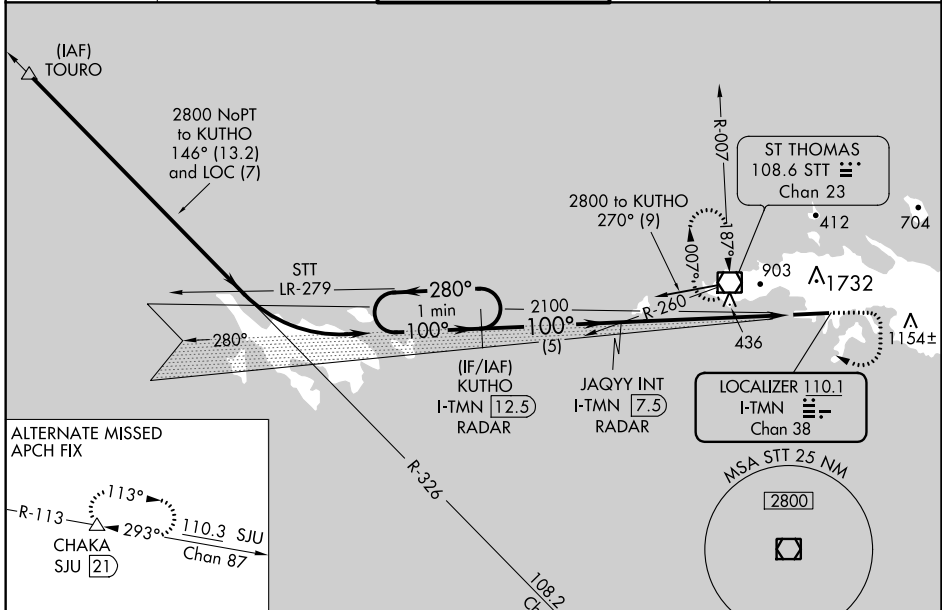
ILS or LOC RWY 10

CYRIL E KING (STT)(TIST)

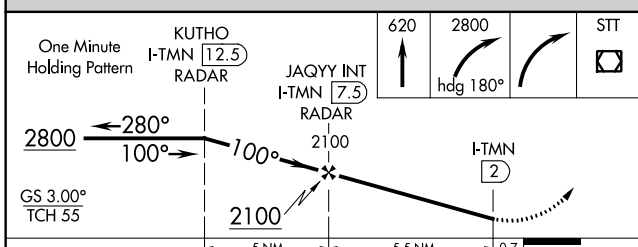
⚠ Circling NA at night.
⚠ Procedure NA when control tower closed.
 Circling NA north of Rwy 10-28.

MISSED APPROACH: Climb to 620 then climbing right turn to 2800 on heading 180° then right turn direct St Thomas VOR/DME and hold.

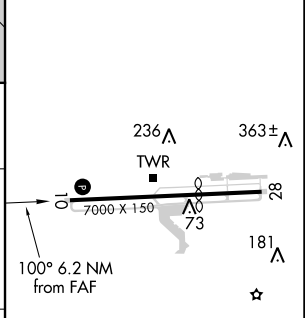
ATIS 124.0	SAN JUAN CENTER 128.65 279.6	ST. THOMAS TOWER ★ 118.8 (CTAF) 0 257.6 118.1 (NORTH OF ISLAND)	GND CON 121.9	UNICOM 122.95
----------------------	--	--	-------------------------	-------------------------



CAUTION: Pilots may encounter false illusory indications during night approaches to Rwy 10 when using outside visual cues for vertical guidance.



ELEV 24	D	TDZE 24
---------	----------	---------



CATEGORY	A	B	C	D
S-ILS 10	415-1¼ 391 (400-1¼)			
S-LOC 10	620-1 596 (600-1)		620-1¾ 596 (600-1¾)	
CIRCLING	660-1¼ 636 (700-1¼)		660-1¾ 636 (700-1¾)	

REIL Rwy 10

MIRL Rwy 10-28

FAF to MAP 5.5 NM

Knots	60	90	120	150	180
Min:Sec	5:30	3:40	2:45	2:12	1:50

SE-3, 31 JAN 2019 to 28 FEB 2019

SE-3, 31 JAN 2019 to 28 FEB 2019