

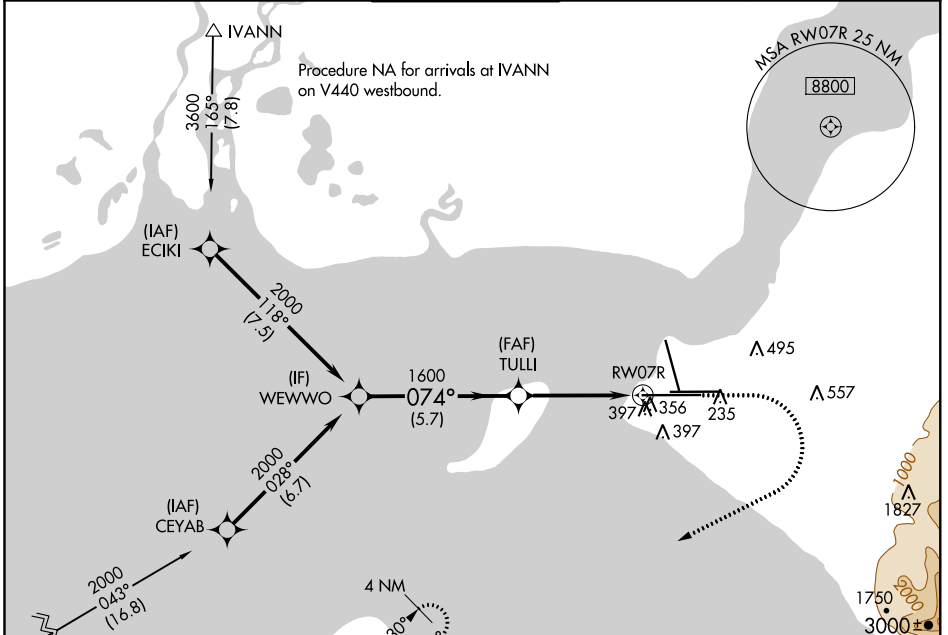
WAAS CH 81815 W07A	APP CRS 074°	Rwy Idg 12400 TDZE 132 Apt Elev 151
--	------------------------	--

RNAV (GPS) Y RWY 7R

TED STEVENS ANCHORAGE INTL (ANC) (PANC)

<p>▼ For uncompensated Baro-VNAV systems, LNAV/VNAV NA below -24°C (-11°F) or above 43°C (109°F). DME/DME RNP-0.3 NA. For inop ALS, increase LNAV/VNAV all Cats visibility to 1 3/4 SM, and LNAV Cat C and D visibility to 1 3/8 SM.</p>	ALSF-2	MISSED APPROACH: Climb to 900 then climbing right turn to 3000 direct JUKEP and hold.

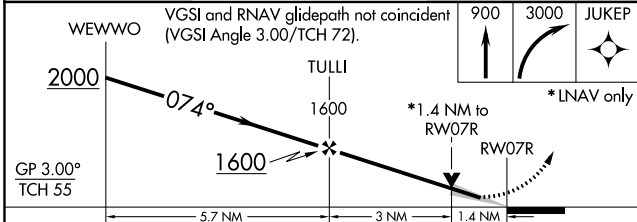
D-ATIS 135.5	ANCHORAGE APP CON 118.6 290.5	ANCHORAGE TOWER 118.3 257.8	GND CON 121.9 338.25	CLNC DEL 119.4 323.1
------------------------	---	---------------------------------------	--------------------------------	--------------------------------



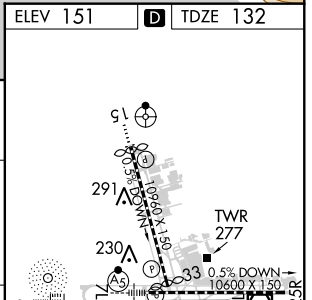
AK, 03 JAN 2019 to 28 FEB 2019

AK, 03 JAN 2019 to 28 FEB 2019

ELEV 151	TDZE 132
----------	----------



CATEGORY	A	B	C	D
LPV DA		332/18	200 (200-1/2)	
LNAV/VNAV DA		660-1 3/8	528 (600-1 3/8)	
LNAV MDA	640/24	508 (500-1/2)	640/55	508 (500-1)
CIRCLING	740-1	589 (600-1)	740-1 1/2	800-2
			589 (600-1 1/2)	649 (700-2)



REIL Rwy 33
TDZ/CL Rws 7L and 7R
HIRL all Rws