

# NEELL SIX ARRIVAL (RNAV)

AK, 03 JAN 2019 to 28 FEB 2019

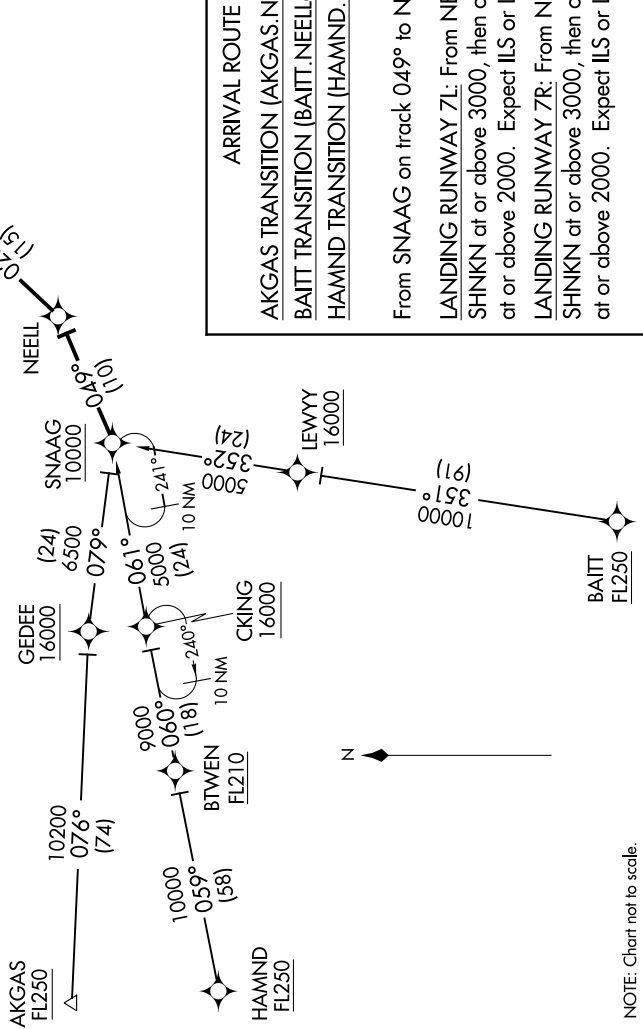
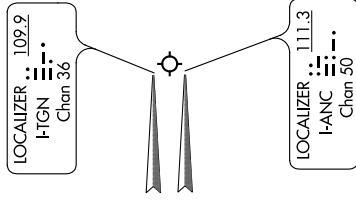
ANCHORAGE APP CON  
126.4 270.25  
D-ATIS  
135.5

NOTE: RNAV 1.

NOTE: GPS required.

NOTE: Turbojet aircraft only.

NOTE: Expect runway assignment from Anchorage Approach on initial contact.



## ARRIVAL ROUTE DESCRIPTION

- AKGAS TRANSITION (AKGAS.NEELL6)
- BAITT TRANSITION (BAITT.NEELL6)
- HAMND TRANSITION (HAMND.NEELL6)

From SNAAG on track 049° to NEELL.

**LANDING RUNWAY 7L:** From NEELL on track 026° to cross SHNKN at or above 3000, then on track 061° to cross AINNK at or above 2000. Expect ILS or LOC/DME RWY 7L approach.

**LANDING RUNWAY 7R:** From NEELL on track 026° to cross SHNKN at or above 3000, then on track 055° to cross ELIAS at or above 2000. Expect ILS or LOC/DME RWY 7R approach.

NOTE: Chart not to scale.

AK, 03 JAN 2019 to 28 FEB 2019

# NEELL SIX ARRIVAL (RNAV)