

|   |                        |   |
|---|------------------------|---|
| VORTAC GNV<br><b>116.2</b><br>Chan <b>109</b> | APP CRS<br><b>233°</b> | Rwy Idg <b>4158</b><br>TDZE <b>144</b><br>Apt Elev <b>151</b> |
|---|------------------------|---|

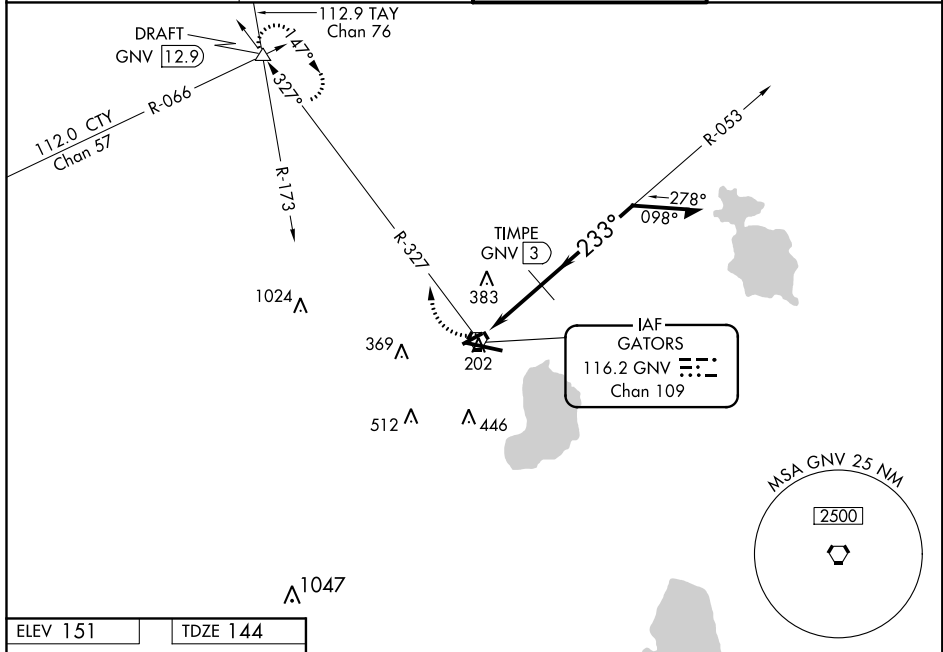
# VOR RWY 25

GAINESVILLE RGNL (GNV)

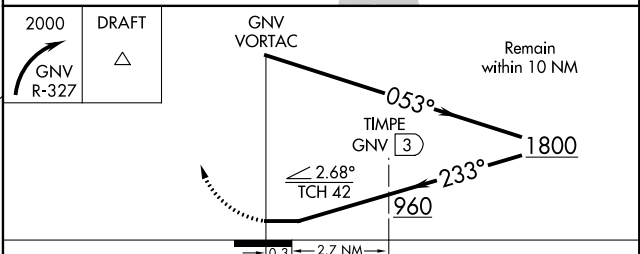
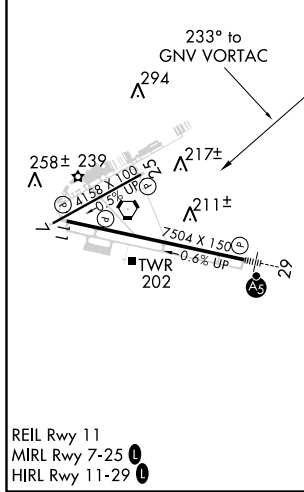
**⚠** When local altimeter setting not received, use Ocala Intl-Jim Taylor Field altimeter setting and increase all MDA 100 feet. Increase S-25 Cat A/C/D and Circling Cat A/C/D visibility ¼ mile. DME minimums: Increase S-25 Cat C and D and Circling Cat D visibility ¼ mile. Visibility reduction by helicopters NA. When VGSI inoperative, straight-in/Circling Rwy 25 procedure NA at night.

**MISSED APPROACH:** Climbing right turn to 2000 via GNV R-327 to DRAFT INT/12.9 DME and hold.

|                       |   |  |                         |
|-----------------------|---|--|-------------------------|
| ATIS<br><b>127.15</b> | JACKSONVILLE APP CON<br><b>118.175 338.25</b> | GAINESVILLE TOWER★<br><b>119.55 (CTAF) 353.7</b> | GND CON<br><b>121.7</b> |
|-----------------------|---|--|-------------------------|



|          |          |
|----------|----------|
| ELEV 151 | TDZE 144 |
|----------|----------|



| CATEGORY     | A                    | B                      | C                      | D                      |
|--------------|----------------------|------------------------|------------------------|------------------------|
| S-25         | 960-1<br>816 (900-1) | 960-1¼<br>816 (900-1¼) | 960-2½<br>816 (900-2½) | 960-2¾<br>816 (900-2¾) |
| CIRCLING     | 960-1<br>809 (900-1) | 960-1¼<br>809 (900-1¼) | 960-2½<br>809 (900-2½) | 960-2¾<br>809 (900-2¾) |
| DME MINIMUMS |                      |                        |                        |                        |
| S-25         | 620-1 476 (500-1)    | 620-1¼<br>476 (500-1¼) | 620-1½<br>476 (500-1½) | 620-1½<br>476 (500-1½) |
| CIRCLING     | 620-1 469 (500-1)    | 620-1½<br>469 (500-1½) | 620-1½<br>469 (500-1½) | 740-2<br>589 (600-2)   |

SE-3, 31 JAN 2019 to 28 FEB 2019

SE-3, 31 JAN 2019 to 28 FEB 2019