

RNAV (GPS) RWY 7

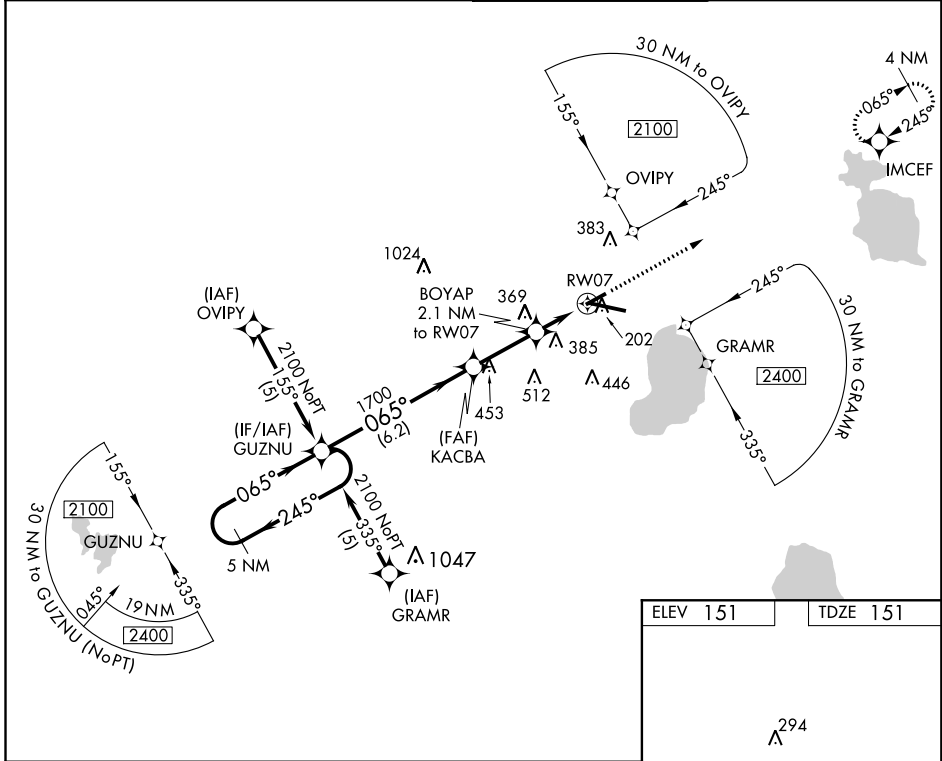
GAINESVILLE RGNL (GNTV)

APP CRS	Rwy Idg	4158
065°	TDZE	151
	Apt Elev	151

▽ DME/DME RNP-0.3 NA. Visibility reduction by helicopters NA.
▲ VDP NA when using Ocala Intl-Jim Taylor Fld altimeter setting.
 When local altimeter setting not received, use Ocala Intl-Jim Taylor Field altimeter setting and increase all MDA 100 feet. Increase LNAV Cat C and Cat D, and Circling Cat D visibility 1/4 mile. When VGSI inoperative, Circling Rwy 25 NA at night.

MISSED APPROACH: Climb to 2000 direct IMCEF and hold.

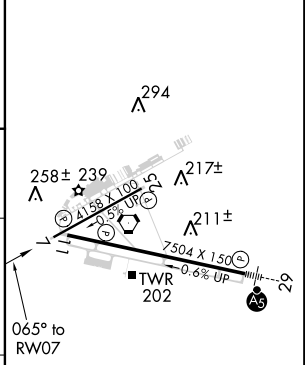
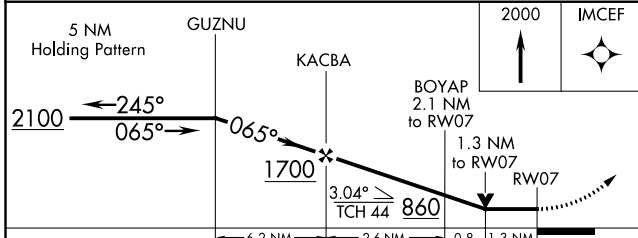
ATIS 127.15	JACKSONVILLE APP CON 118.175 338.25	GAINESVILLE TOWER ★ 119.55 (CTAF) 353.7	GND CON 121.7
-----------------------	---	---	-------------------------



SE-3, 31 JAN 2019 to 28 FEB 2019

SE-3, 31 JAN 2019 to 28 FEB 2019

ELEV 151	TDZE 151
----------	----------



CATEGORY	A	B	C	D
LNAV MDA	620-1 469 (500-1)		620-1 1/4 469 (500-1 1/4)	620-1 1/2 469 (500-1 1/2)
CIRCLING	620-1 469 (500-1)		620-1 1/2 469 (500-1 1/2)	740-2 589 (600-2)

REIL Rwy 11
 MIRL Rwy 7-25
 HIRL Rwy 11-29