

WAAS CH 86617 W14A	APP CRS 135°	Rwy Idg TDZE Apt Elev	7302 803 808
--	------------------------	-----------------------------	---

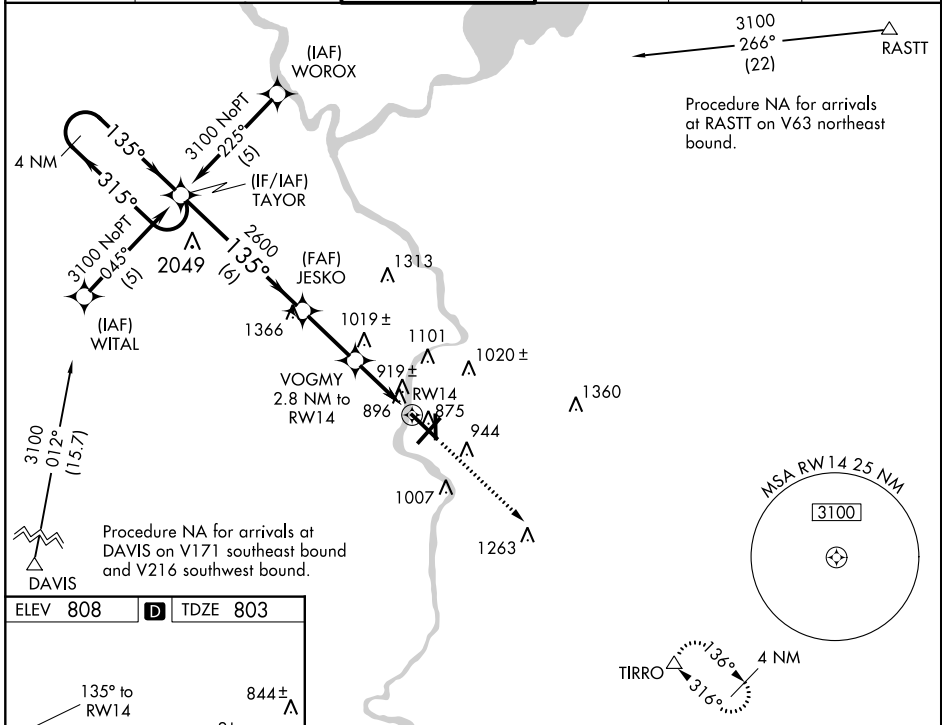
RNAV (GPS) RWY 14

SOUTHERN WISCONSIN RGNL (JVL)

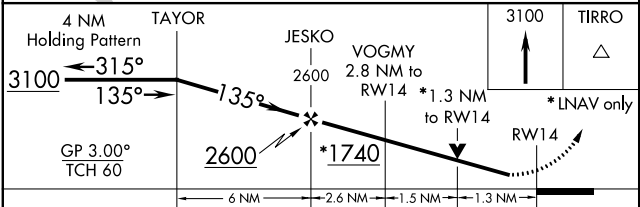
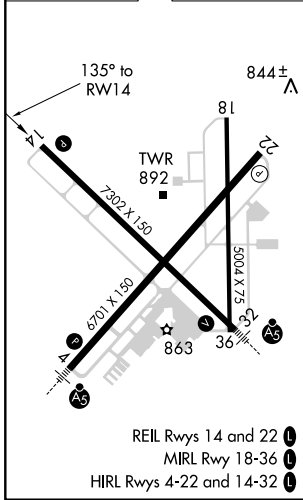
⚠ Circling to Rwy 18 NA at night. Baro-VNAV NA when using Rockford altimeter setting. For uncompensated Baro-VNAV systems, LNAV/VNAV NA below -16°C (4°F) or above 47°C (116°F). DME/DME RNP-0.3 NA. Visibility reduction by helicopters NA. When local altimeter setting not received, use Rockford altimeter setting and increase all DA 69 feet and all MDA 80 feet; increase LPV all Cats, LNAV/VNAV all Cats, LNAV Cats C and D and Circling Cat D visibility ¼ mile. VDP NA with Rockford altimeter setting.

⚠ MISSED APPROACH: Climb to 3100 direct TIRRO and hold.

ATIS 128.25	ROCKFORD APP CON 121.0 327.0	JANESVILLE TOWER ★ 118.8(CTAF) 0 225.4	GND CON 121.65	CLNC DEL 121.65	UNICOM 122.95
-----------------------	--	--	--------------------------	---------------------------	-------------------------



ELEV 808	D	TDZE 803
----------	----------	----------



CATEGORY	A	B	C	D
LPV DA		1003-3/4	200 (200-3/4)	
LNAV/VNAV DA		1222-1 1/2	419 (500-1 1/2)	
LNAV MDA	1280-1	477 (500-1)	1280-1 1/4 477 (500-1 1/4)	1280-1 1/2 477 (500-1 1/2)
CIRCLING	1280-1	472 (500-1)	1280-1 1/2 472 (500-1 1/2)	1420-2 612 (700-2)

EC-3, 31 JAN 2019 to 28 FEB 2019

EC-3, 31 JAN 2019 to 28 FEB 2019