

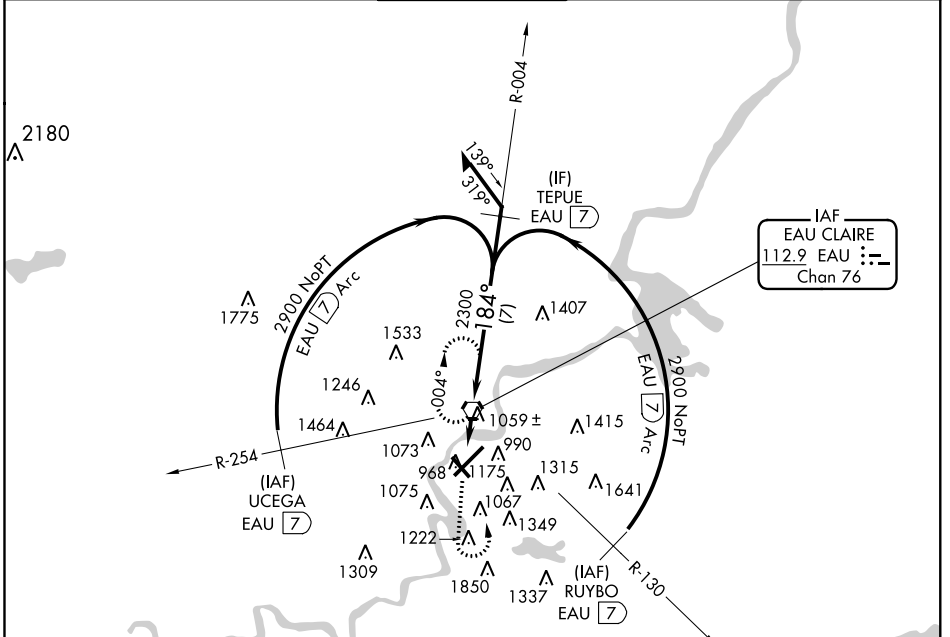
VORTAC EAU <b>112.9</b> Chan 76	APP CRS <b>184°</b>	Rwy ldg TDZE Apt Elev	<b>N/A</b> <b>N/A</b> <b>913</b>
---------------------------------------	------------------------	-----------------------------	--

**VOR-A**  
CHIPPEWA VALLEY RGNL (EAU)

**⚠** Visibility reduction by helicopters NA. When local altimeter setting not received, use Rice Lake altimeter setting and increase all MDA 120 feet, increase Circling Cat A and B visibility ¼ mile and Cat C visibility ½ mile.

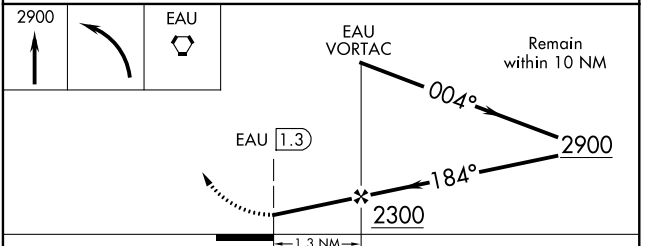
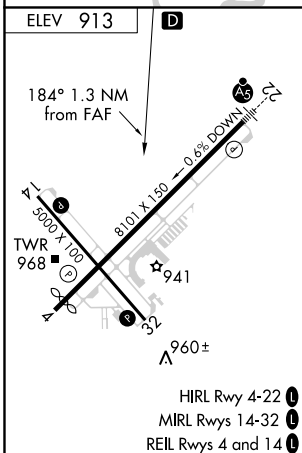
**MISSED APPROACH:** Climb to 2900 then left turn direct EAU VORTAC and hold.

ATIS <b>126.025</b>	MINNEAPOLIS CENTER <b>125.3 335.6</b>	<b>EAU CLAIRE TOWER ★</b> <b>118.575</b> (CTAF) <b>0</b>	GND CON <b>120.925</b>	UNICOM <b>122.95</b>
------------------------	--	---	---------------------------	-------------------------



EC-3, 31 JAN 2019 to 28 FEB 2019

EC-3, 31 JAN 2019 to 28 FEB 2019



FAF to MAP 1.3 NM					
Knots	60	90	120	150	180
Min:Sec	1:18	0:52	0:39	0:31	0:26
CATEGORY	A	B	C	D	
CIRCLING	1780-1 867 (900-1)	1780-1¼ 867 (900-1¼)	1780-2½ 867 (900-2½)	1820-3 907 (1000-3)	