


APP CRS	Rwy Idg	<b>5130</b>
<b>053°</b>	TDZE	<b>51</b>
	Apt Elev	<b>53</b>

**VOR RWY 4**  
DELAWARE COASTAL (GED)

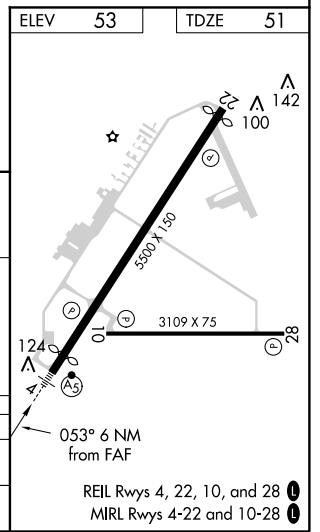
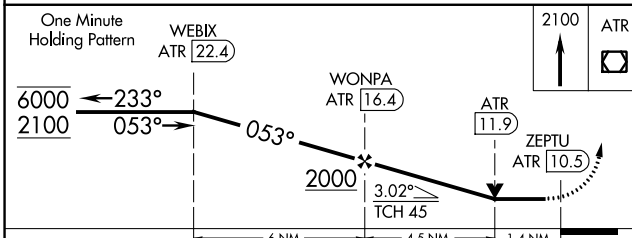
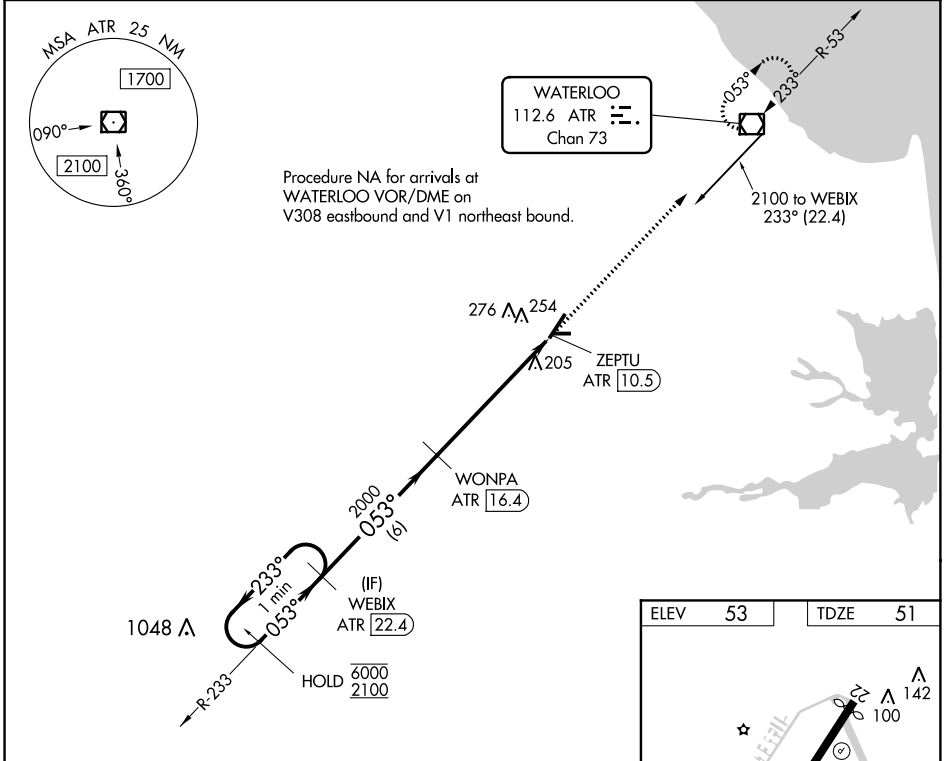
DME required.

**▼** Rwy 4 helicopter visibility reduction below 3/4 SM NA. For inop ALS, increase Cat A/B visibility to 1 SM, and Cat C/D to 1 3/8 SM. When local altimeter setting not received, use Salisbury altimeter setting increase all MDA 60 feet; increase S-4 Cats C/D visibility 1/8 mile, and Cat C Circling visibility 3/8 SM. For inop ALS when using Salisbury altimeter setting, increase Cat A/B visibility to 1 SM.

MALSR 

MISSED APPROACH: Climb to 2100 direct ATR VOR/DME and hold.

ASOS <b>118.375</b>	DOVER APP CON <b>132.425 257.875</b>	CLNC DEL <b>125.55</b>	UNICOM <b>123.0 (CTAF) 1</b>
------------------------	---	---------------------------	---------------------------------



CATEGORY	A	B	C	D
S-04	540-3/4 489 (500-3/4)		540-1 489 (500-1)	
<b>C</b> CIRCLING	560-1 507 (600-1)	580-1 527 (600-1)	580-1 1/2 527 (600-1 1/2)	620-2 567 (600-2)

NE-3, 31 JAN 2019 to 28 FEB 2019

NE-3, 31 JAN 2019 to 28 FEB 2019