

WAAS CH 53302 W04A	APP CRS 042°	Rwy Idg 5997 TDZE 3374 Apt Elev 3374
--	------------------------	---

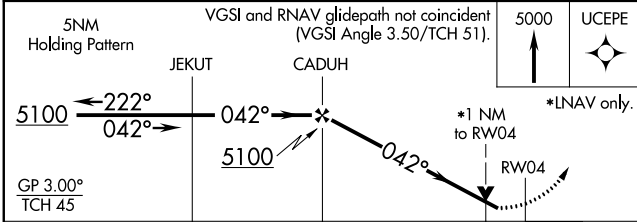
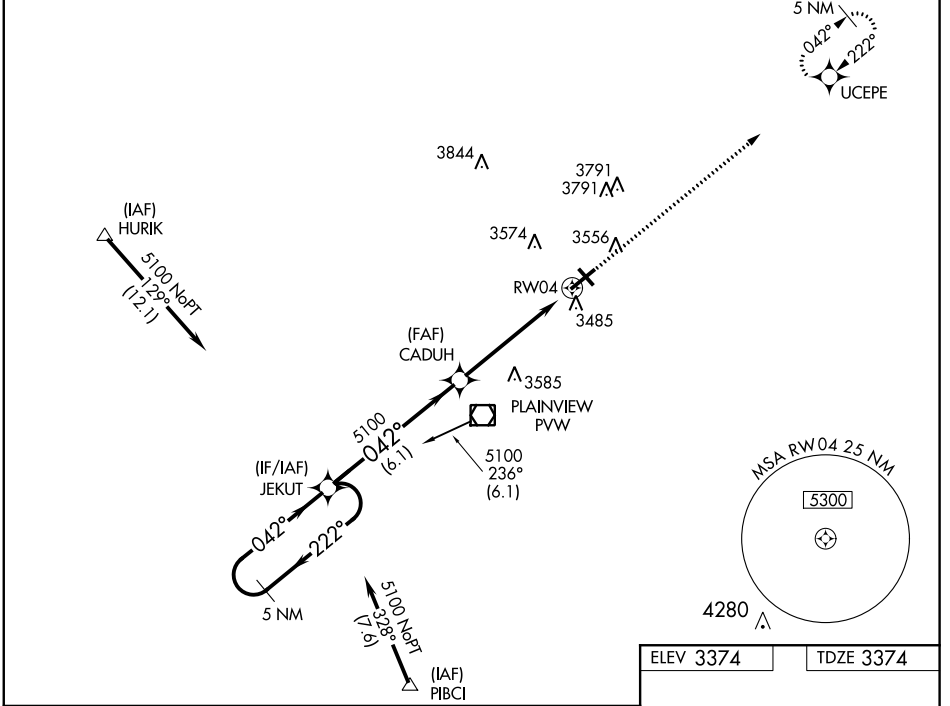
RNAV (GPS) RWY 4

HALE COUNTY (P_VW)

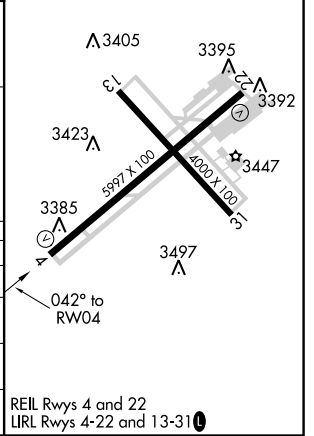
⚠ DME/DME RNP-0.3 NA. For uncompensated Baro-VNAV systems, LNAV/VNAV NA below -21°C (-5°F) or above 42°C (108°F). If local altimeter setting not received, use Lubbock altimeter setting and increase all DAs/MDAs 100 feet. VDP and Baro-VNAV NA when using Lubbock altimeter setting. Helicopter visibility reduction below ¾ SM NA. When local altimeter setting is not received, use Lubbock altimeter setting; increase all DA 83 feet and increase all LPV and LNAV/VNAV visibility ¼ mile, increase all MDA 100 feet and LNAV Cat C/D and Circling Cat C visibility ¼ mile.

⚠ MISSED APPROACH: Climb to 5000, direct UCEPE and hold.

ASOS 119.675	LUBBOCK APP CON 119.2 351.8	CLNC DEL 121.7	UNICOM 123.0 (CTAF) 0
------------------------	---------------------------------------	--------------------------	---------------------------------



ELEV 3374	TDZE 3374
-----------	-----------



CATEGORY	A	B	C	D
LPV DA		3624-1	250 (300-1)	
LNAV/ VNAV DA		3730-1¼	356 (400-1¼)	
LNAV MDA	3800-1	426 (500-1)	3800-1¼	426 (500-1¼)
CIRCLING	3920-1¼ 546 (600-1¼)	3940-1¼ 566 (600-1¼)	3940-1½ 566 (600-1½)	3940-2 566 (600-2)

REIL Rwy 4 and 22
LIRL Rwy 4-22 and 13-31 0

SC-2, 31 JAN 2019 to 28 FEB 2019

SC-2, 31 JAN 2019 to 28 FEB 2019