

WAAS CH <b>63015</b> <b>W06A</b>	APP CRS <b>062°</b>	Rwy Idg <b>7699</b> TDZE <b>692</b> Apt Elev <b>695</b>
--	------------------------	---

# RNAV (GPS) RWY 6

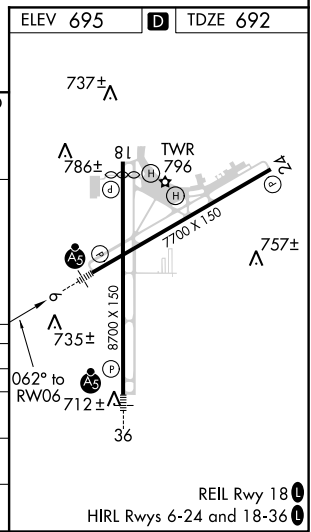
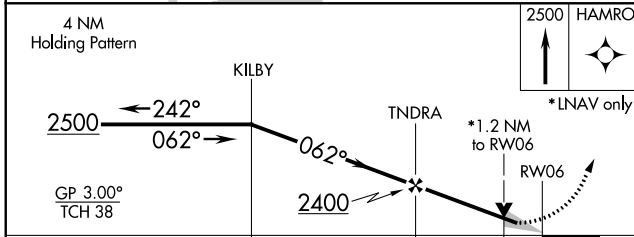
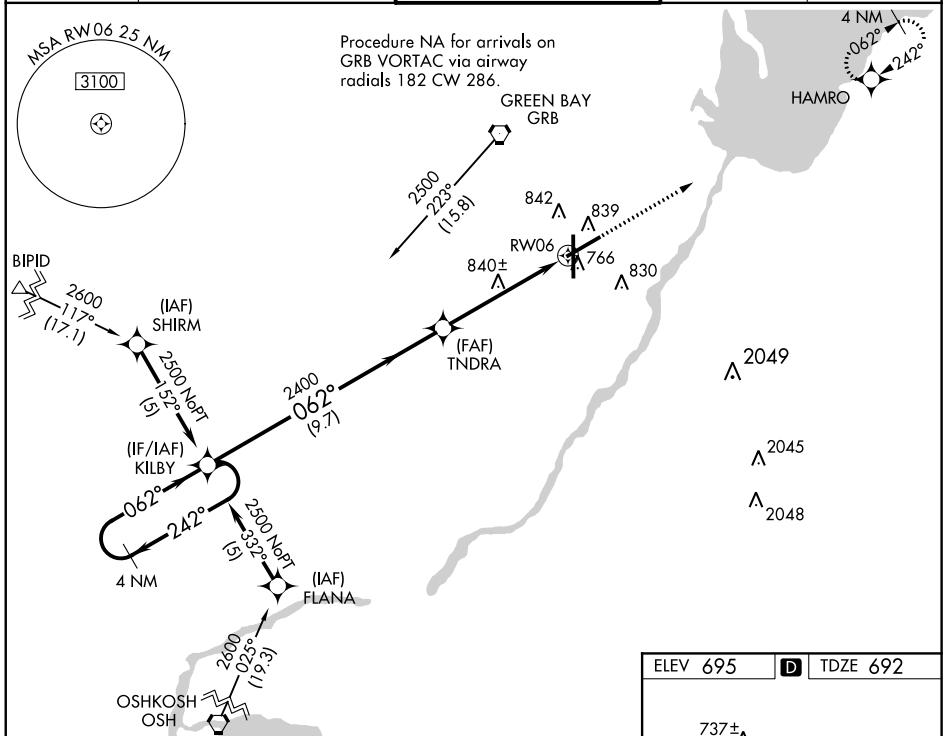
GREEN BAY-AUSTIN STRAUBEL INTL (GRB)

**▼** For uncompensated Baro-VNAV systems, LNAV/VNAV NA below -1.6°C (4°F) or above 47°C (116°F). DME/DME RNP-0.3 NA. For inoperative MALSR, increase ASR LNAV/VNAV Cat D visibility to RVR 5000 and LNAV Cat D visibility to RVR 6000.



MISSED APPROACH: Climb to 2500 direct HAMRO and hold.

ATIS <b>124.1</b>	GREEN BAY APP CON* <b>119.4 338.2</b>	GREEN BAY TOWER* <b>118.7 (CTAF) 257.8</b>	GND CON <b>121.9</b>	CLNC DEL <b>121.75</b>
----------------------	--	---	-------------------------	---------------------------



CATEGORY	A	B	C	D
LPV DA		892/24		200 (200-½)
LNAV/VNAV DA	1000/24	308 (400-½)		1000/40 308 (400-¾)
LNAV MDA	1100/24	408 (500-½)		1100/50 408 (500-1)
CIRCLING	1200-1	505 (600-1)	1200-1½ 505 (600-1½)	1260-2 565 (600-2)

EC-3, 31 JAN 2019 to 28 FEB 2019

EC-3, 31 JAN 2019 to 28 FEB 2019