

WAAS CH <b>42902</b> <b>W36A</b>	APP CRS <b>002°</b>	Rwy Idg TDZE Apt Elev	<b>8201</b> <b>684</b> <b>695</b>
--	------------------------	-----------------------------	---

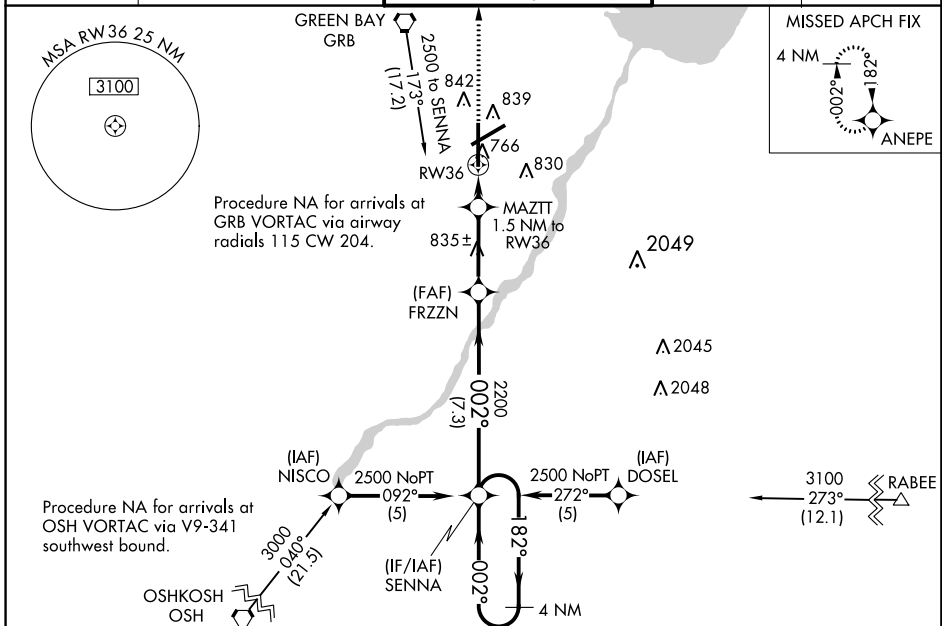
# RNAV (GPS) RWY 36

GREEN BAY-AUSTIN STRAUBEL INTL (GRB)

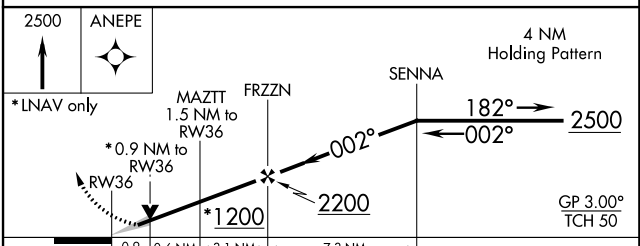
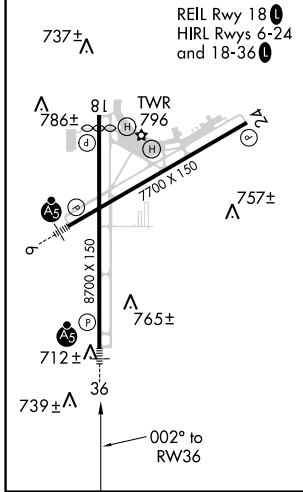
**ASR** For uncompensated Baro-VNAV systems, LNAV/VNAV NA below -16°C (4°F) or above 47°C (116°F).  
DME/DME RNP-0.3 NA.  
Inoperative table does not apply to LNAV Cat D.

**MALSR** MISSED APPROACH: Climb to 2500 direct ANEPE and hold.

ATIS <b>124.1</b>	GREEN BAY APP CON* <b>119.4 338.2</b>	GREEN BAY TOWER* <b>118.7 (CTAF) 0 257.8</b>	GND CON <b>121.9</b>	CLNC DEL <b>121.75</b>
----------------------	--	---	-------------------------	---------------------------



ELEV 695	<b>D</b>	TDZE 684
----------	----------	----------



CATEGORY	A	B	C	D
LPV DA	884/24 200 (200-½)			
LNAV/VNAV DA	1097/50 413 (500-1)			
LNAV MDA	1020/24 336 (400-½)			1020/50 336 (400-1)
CIRCLING	1200-1 505 (600-1)		1200-1½ 505 (600-1½)	1260-2 565 (600-2)

EC-3, 31 JAN 2019 to 28 FEB 2019

EC-3, 31 JAN 2019 to 28 FEB 2019