

WAAS CH <b>42802</b> <b>W18A</b>	APP CRS <b>182°</b>	Rwy Idg <b>8200</b>
		TDZE <b>695</b>
		Apt Elev <b>695</b>

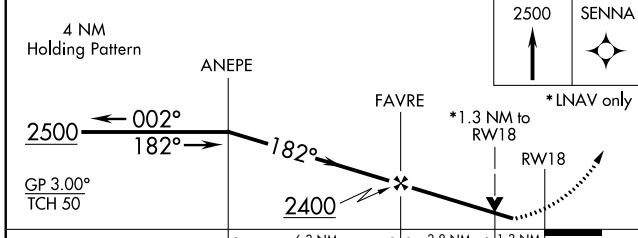
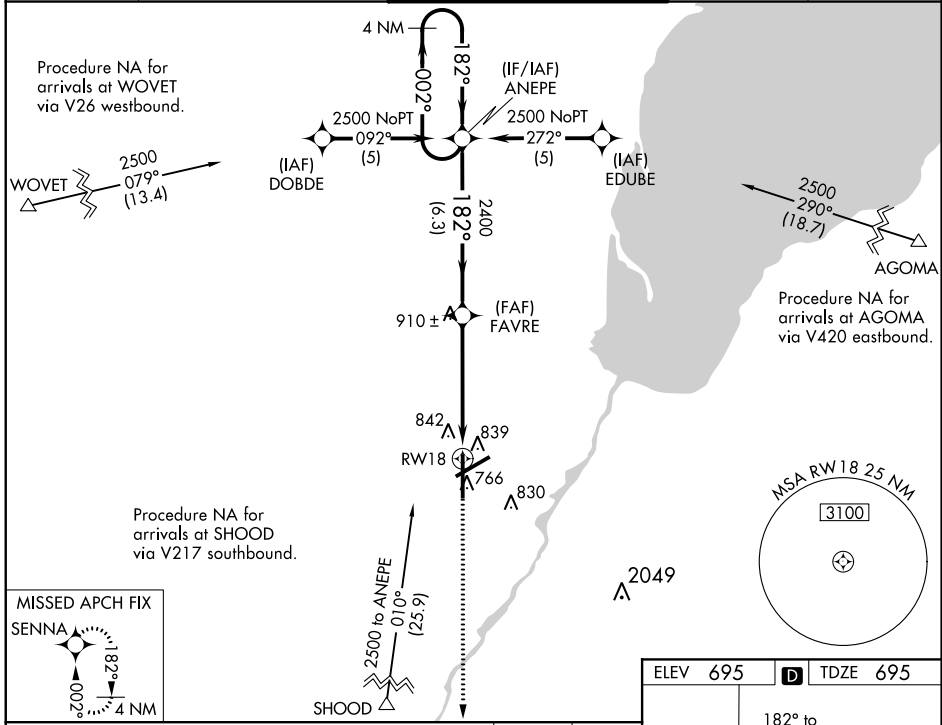
# RNAV (GPS) RWY 18

GREEN BAY-AUSTIN STRAUBEL INTL (G.R.B)

**ASR** For uncompensated Baro-VNAV systems, LNAV/VNAV NA below -16° C (4° F) or above 47° C (117° F). DME/DME RNP-0.3 NA. Visibility reduction by helicopters NA.

MISSED APPROACH: Climb to 2500 direct SENNA and hold.

ATIS <b>124.1</b>	GREEN BAY APP CON* <b>119.4 338.2</b>	GREEN BAY TOWER* <b>118.7 (CTAF) 257.8</b>	GND CON <b>121.9</b>	CLNC DEL <b>121.75</b>
----------------------	--	---	-------------------------	---------------------------



ELEV 695	TDZE 695
737±	182° to RWY18
81	TWR 796
7700 X 150	757±
712±	36
8700 X 150	

CATEGORY	A	B	C	D
LPV DA	979-1 284 (300-1)			
LNAV/VNAV DA	1187-1¾ 492 (500-1¾)			
LNAV MDA	1160-1 465 (500-1)	1160-1½ 465 (500-1½)	1160-1½ 465 (500-1½)	1160-1½ 465 (500-1½)
CIRCLING	1200-1 505 (600-1)	1200-1½ 505 (600-1½)	1260-2 565 (600-2)	

EC-3, 31 JAN 2019 to 28 FEB 2019

EC-3, 31 JAN 2019 to 28 FEB 2019

REIL Rwy 18  
HIRL Rws 6-24 and 18-36