

LOC/DME I-GRB 109.5 Chan 32	APP CRS 242°	Rwy ldg TDZE Apt Elev	7699 681 695
--	------------------------	-----------------------------	---

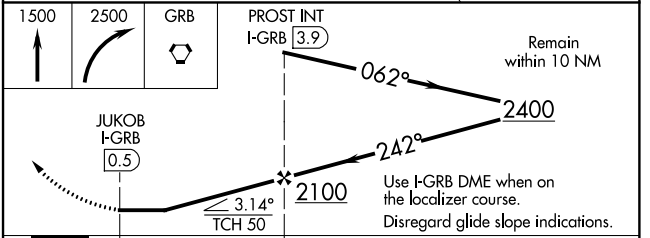
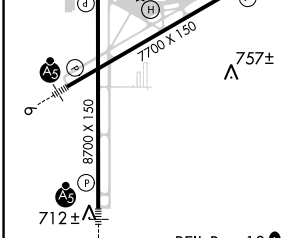
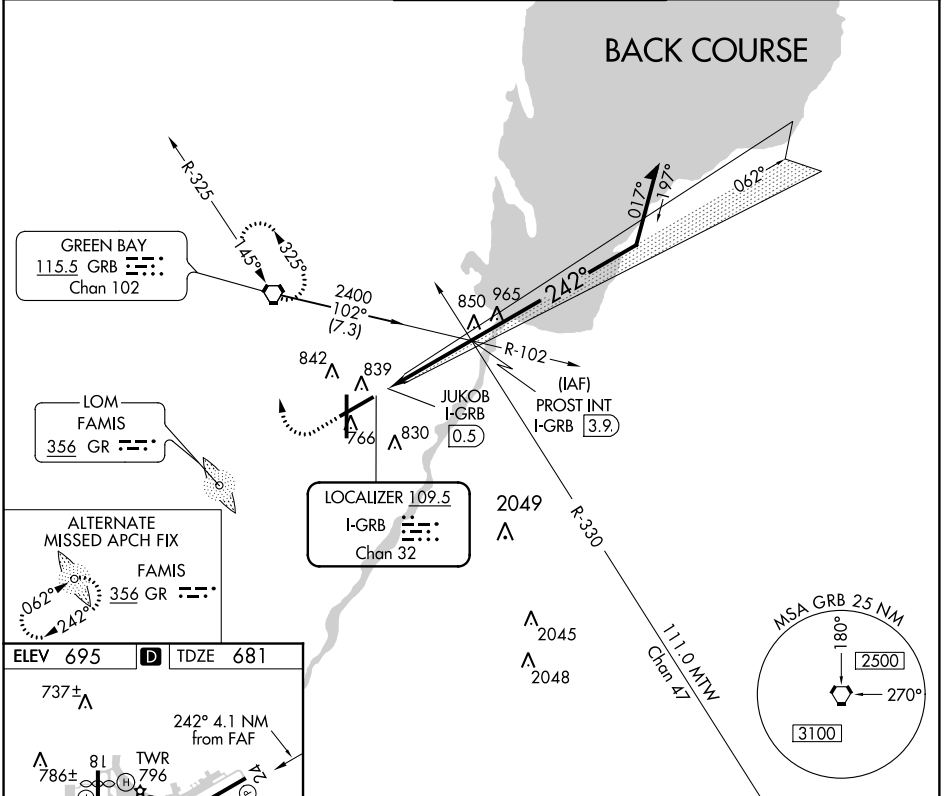
LOC BC RWY 24

GREEN BAY-AUSTIN STRAUBEL INTL (GRB)

ASR

MISSED APPROACH: Climb to 1500 then climbing right turn to 2500 direct GRB VORTAC and hold.

ATIS 124.1	GREEN BAY APP CON* 119.4 338.2	GREEN BAY TOWER* 118.7 (CTAF) 257.8	GND CON 121.9	CLNC DEL 121.75
----------------------	--	---	-------------------------	---------------------------



FAF to MAP 3.4 NM					
Knots	60	90	120	150	180
Min:Sec	3:24	2:16	1:42	1:21	1:08
CATEGORY	A	B	C	D	
S-24	1100-1	419 (500-1)	1100-1½	419 (500-1½)	
CIRCLING	1200-1	505 (600-1)	1200-1½	565 (600-2)	1260-2

EC-3, 31 JAN 2019 to 28 FEB 2019

EC-3, 31 JAN 2019 to 28 FEB 2019