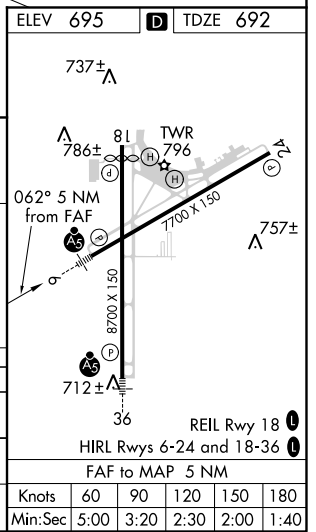
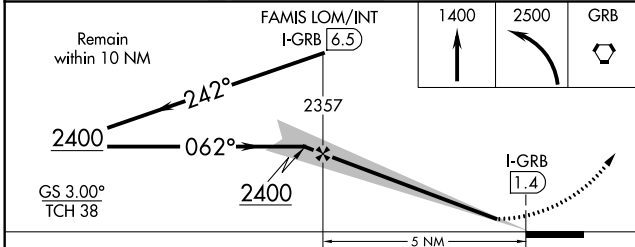
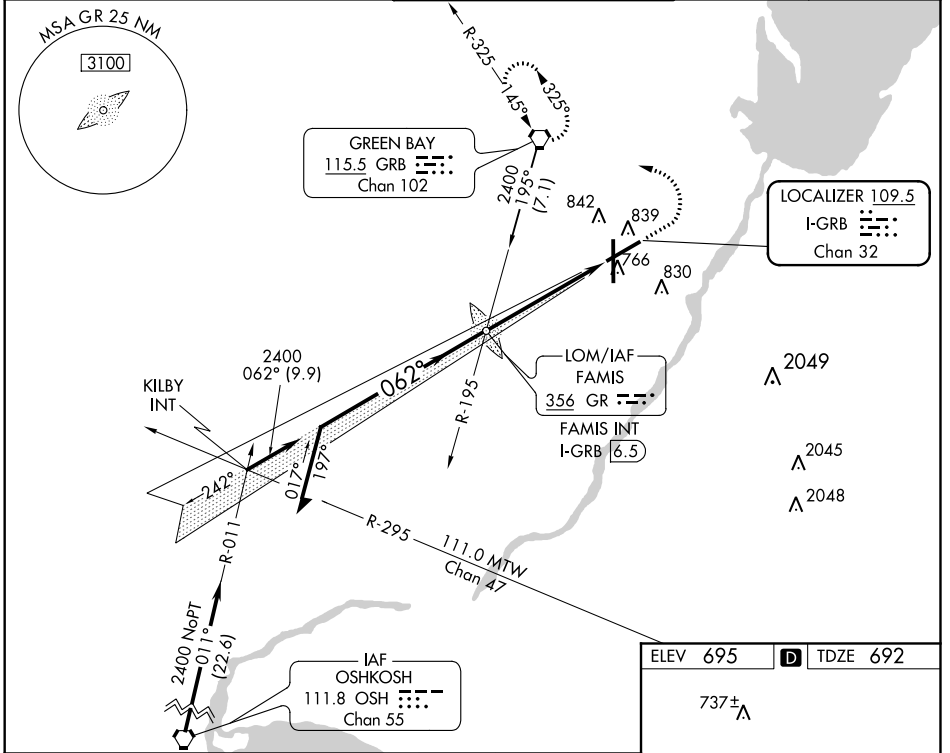


LOC/DME I-GRB 109.5 Chan 32	APP CRS 062°	Rwy Idg TDZE Apt Elev 7699 692 695
--	------------------------	--

ILS or LOC RWY 6
GREEN BAY-AUSTIN STRAUBEL INTL (GRB)

ASR	* RVR 1800 authorized with the use of FD or AP or HUD to DA.	MALSR 	MISSED APPROACH: Climb to 1400 then climbing left turn to 2500 direct GRB VORTAC and hold.
------------	--	-----------	--

ATIS 124.1	GREEN BAY APP CON* 119.4 338.2	GREEN BAY TOWER* 118.7(CTAF) 257.8	GND CON 121.9	CLNC DEL 121.75
----------------------	--	--	-------------------------	---------------------------



CATEGORY	A	B	C	D
S-ILS 6	*892/24 200 (200-½)			
S-LOC 6	1100/24 408 (500-½)		1100/40 408 (500-¾)	
CIRCLING	1200-1 505 (600-1)		1200-1½ 505 (600-1½)	1260-2 565 (600-2)

EC-3, 31 JAN 2019 to 28 FEB 2019

EC-3, 31 JAN 2019 to 28 FEB 2019