

WAAS CH 82008 W28A	APP CRS 280°	Rwy Idg 8003 TDZE 196 Apt Elev 201
--	------------------------	---

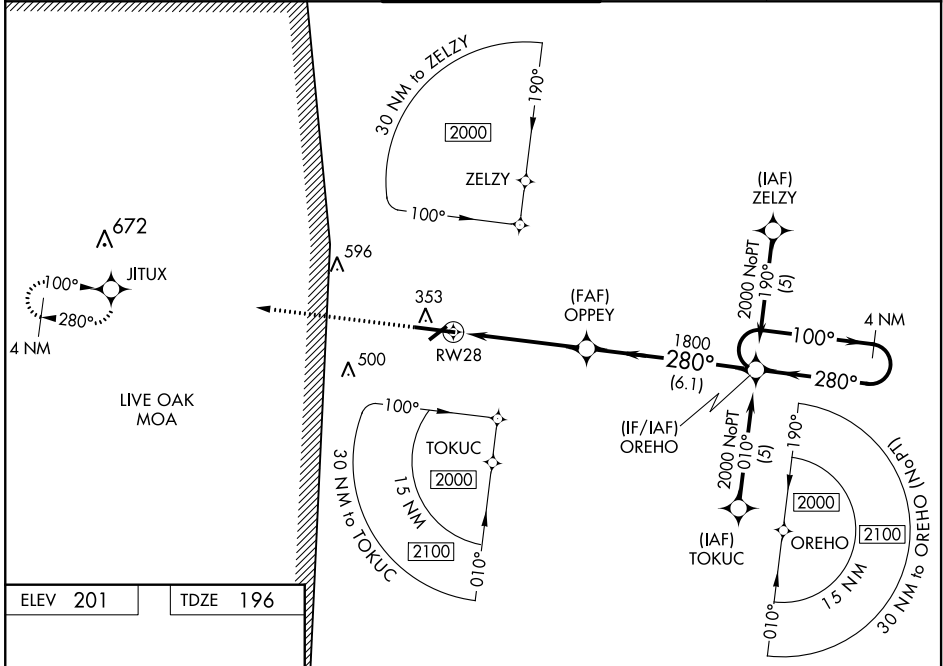
RNAV (GPS) RWY 28

LAKE CITY GATEWAY (LCQ)

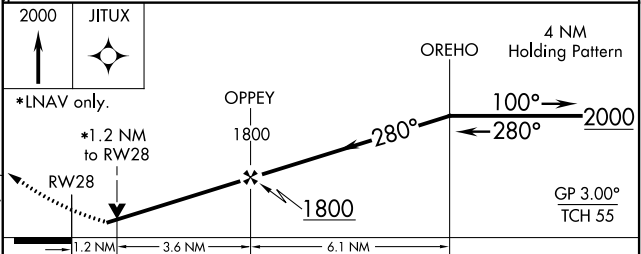
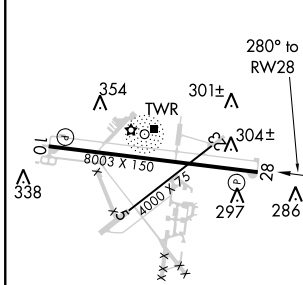
⚠ Baro-VNAV NA when using Gainesville altimeter setting. For uncompensated Baro-VNAV systems, LNAV/VNAV NA below -18°C (0°F) or above 54°C (130°F). DME/DME RNP-0.3 NA. When local altimeter setting not received, use Gainesville altimeter setting and increase LPV DA to 624, LNAV/VNAV DA to 640 and all MDA 100 feet, increase LPV all Cats visibility ¼ mile, LNAV/VNAV all Cats visibility ½ mile, LNAV Cat C/D visibility ¼ mile, and Circling Cat C visibility ½ mile. Circling to Rwy 10 NA at night. Helicopter visibility reduction below ¾ SM not authorized.

MISSED APPROACH:
Climb to 2000 direct
JITUX and hold.

AWOS-3 120.675	JACKSONVILLE CENTER 125.375 254.325	LAKE CITY TOWER ★ 119.2 (CTAF) 0 314.6	GND CON 121.9	UNICOM 122.95
--------------------------	---	--	-------------------------	-------------------------



ELEV 201	TDZE 196
----------	----------



CATEGORY	A	B	C	D
LPV DA	540-1 3/8 344 (400-1 1/8)			
LNAV/VNAV DA	556-1 1/8 360 (400-1 1/8)			
LNAV MDA	640-1 444 (500-1)		640-1 3/8 444 (500-1 1/8)	
CIRCLING	760-1 559 (600-1)		760-2 559 (600-2)	

REIL Rwy 28 **0**
MIRL Rwy 5-23 and 10-28 **0**

SE-3, 31 JAN 2019 to 28 FEB 2019

SE-3, 31 JAN 2019 to 28 FEB 2019