

LOC I-CIU 110.3	APP CRS 157°	Rwy Idg 7203
		TDZE 799
		Apt Elev 799

ILS or LOC RWY 16

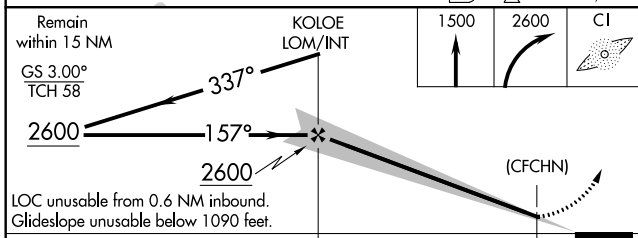
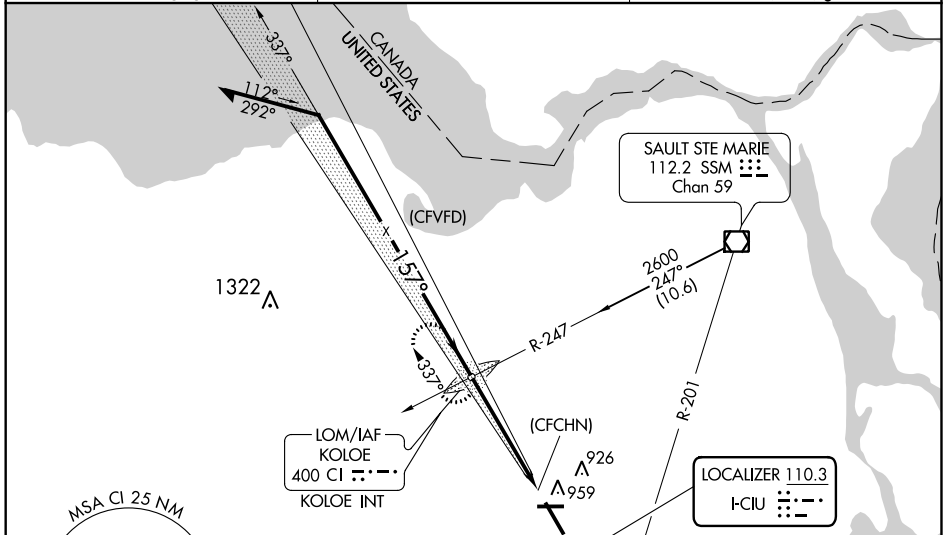
CHIPPEWA COUNTY INTL (CIU)

ADF RADAR.

NA When local altimeter setting not received, use Sault Ste Marie Muni/Sanderson Field altimeter setting: increase DA 1135 feet; increase all MDAs 60 feet and visibility S-LOC 16 Cats C/D/E 1/8 SM and circling Cat E 1/4 SM. For inoperative ALS, increase S-ILS 16 all Cats visibility to 7/8 SM and S-LOC 16 Cat C/D/E to 1 SM. For inoperative ALS when using Sault Ste Marie Muni/Sanderson Field altimeter setting, increase S-ILS all Cats visibility to 1 SM and S-ILOC 16 Cat E to 1 1/4 SM. Autopilot coupled approach NA below 1160.

MALSRL
MISSED APPROACH: Climb to 1500 then climbing right turn to 2600 direct KOLOE LOM/INT and hold. (TACAN aircraft climb to 5000 on heading 160° and SSM VOR/DME R-201 to PINES/SSM 24 DME and hold south, right turn, 021° inbound.)

AWOS-3PT 127.575	TORONTO CENTER 132.65 344.5	UNICOM 123.0 (CTAF)
----------------------------	---------------------------------------	-------------------------------



ELEV	799	TDZE	799
REIL Rwy 10, 28 and 34			
MIRL Rwy 10-28			
HIRL Rwy 16-34			
FAF to MAP 4.7 NM			
Knots	60	90	120 150 180
Min:Sec	4:42	3:08	2:21 1:53 1:34

EC-1, 31 JAN 2019 to 28 FEB 2019

EC-1, 31 JAN 2019 to 28 FEB 2019