

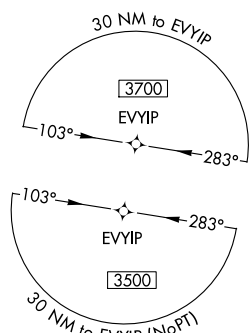
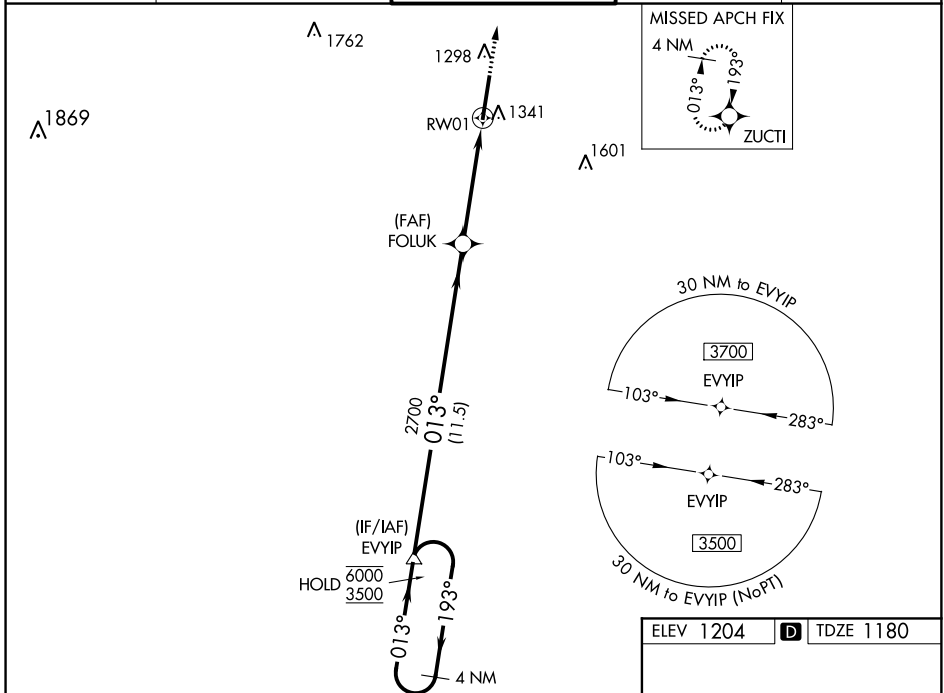
WAAS CH <b>97431</b> <b>W01A</b>	APP CRS <b>013°</b>	Rwy Idg TDZE <b>1180</b> Apt Elev <b>1204</b>	<b>9071</b>
--	------------------------	---	-------------

# RNAV (GPS) RWY 1

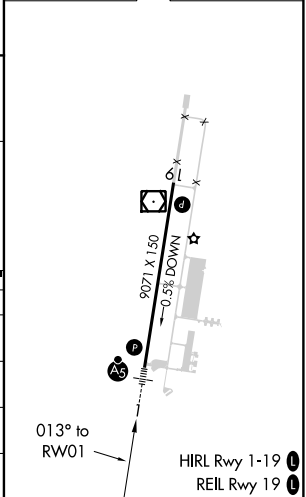
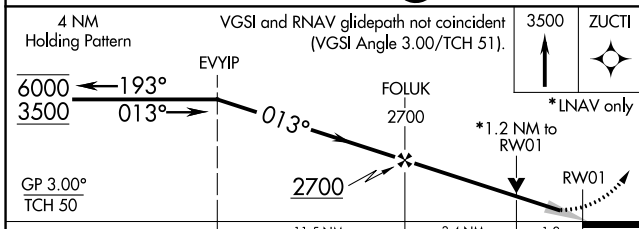
SAWYER INTL (SAW)

RNP APCH.	MALSRL 	MISSED APPROACH: Climb to 3500 direct ZUCTI and hold.
<p><b>▼</b> For inop ALS, increase LNAV Cat C/D visibility to 1 1/8 SM. For uncompensated Baro-VNAV systems, LNAV/VNAV NA below -17°C or above 54°C.</p>		

AWOS-3 <b>118.375</b>	MINNEAPOLIS CENTER <b>119.1 290.2</b>	SAWYER TOWER ★ <b>119.975 (CTAF)</b> <b>1</b>	GND CON <b>121.65</b>	UNICOM <b>122.7</b>
--------------------------	--	--	--------------------------	------------------------



ELEV 1204	<b>D</b> TDZE 1180
-----------	--------------------



CATEGORY	A	B	C	D
LPV DA		1380-1/2	200 (200-1/2)	
LNAV/VNAV DA		1503-1/2	323 (300-1/2)	
LNAV MDA	1600-1/2	420 (400-1/2)	1600-3/4	420 (400-3/4)
<b>C</b> CIRCLING	1680-1	476 (500-1)	1820-1 3/4 616 (700-1 3/4)	1820-2 616 (700-2)

EC-1, 31 JAN 2019 to 28 FEB 2019

EC-1, 31 JAN 2019 to 28 FEB 2019