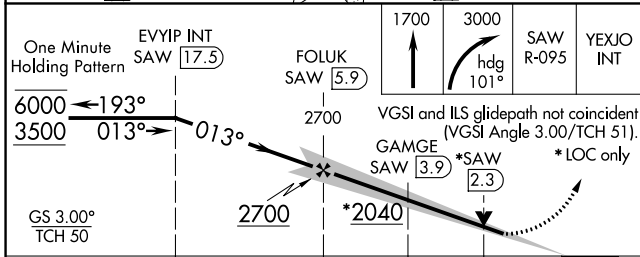
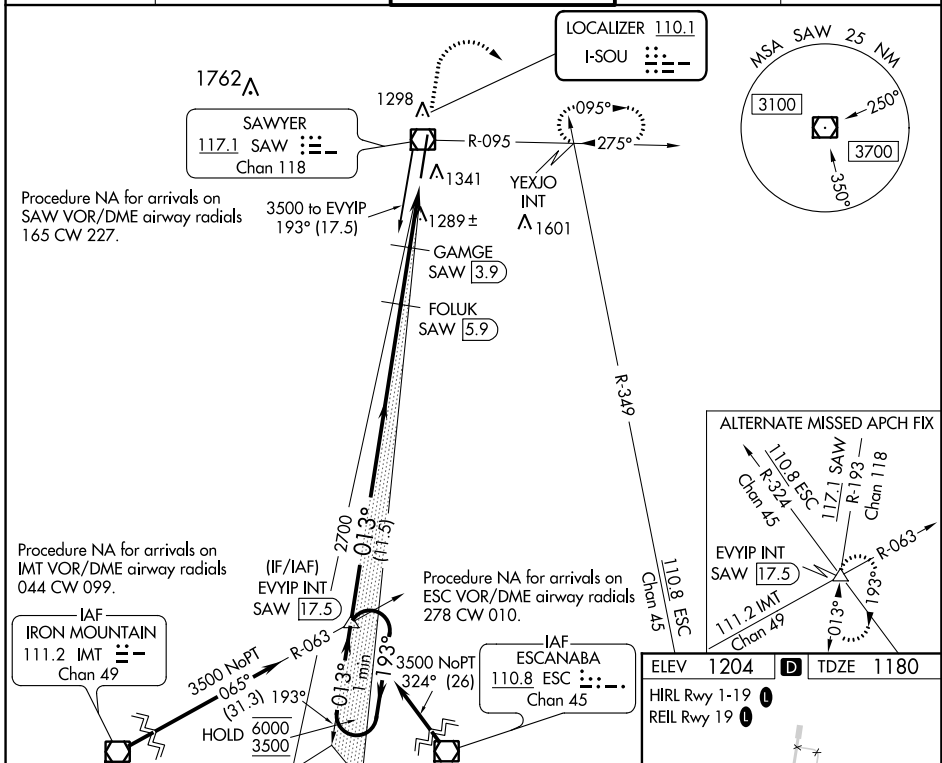


| | | | |
|---------------------------|------------------------|-----------------------------|---|
| LOC I-SOU 110.1 | APP CRS 013° | Rwy Idg TDZE Apt Elev | 9071 1180 1204 |
|---------------------------|------------------------|-----------------------------|---|

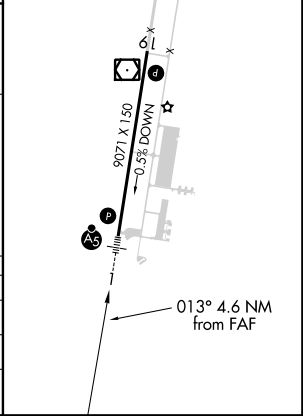
ILS or LOC RWY 1

SAWYER INTL (SAW)

| | | | | |
|--|--|---|---|------------------------|
| DME required for LOC only. | | MALSR | MISSED APPROACH: Climb to 1700 then climbing right turn to 3000 on heading 101° and on SAW VOR/DME R-095 to YEXJO INT and hold. | |
| <p>Autopilot coupled approach NA below 1360 MSL. For inop ALS increase S-LOC Cat C/D visibility to 1 SM.</p> | | | | |
| AWOS-3 118.375 | MINNEAPOLIS CENTER 119.1 290.2 | SAWYER TOWER ★ 119.975 (CTAF) | GND CON 121.65 | UNICOM 122.7 |



| | |
|---------------|-------------|
| ELEV 1204 | TDZE 1180 |
| HIRL Rwy 1-19 | REIL Rwy 19 |



| CATEGORY | A | B | C | D |
|----------|--------------------|---|---|---|
| S-ILS 1 | 1380-½ | | 200 (200-½) | |
| S-LOC 1 | 1540-½ 360 (400-½) | | 1540-⅝ 360 (400-⅝) | |
| CIRCLING | 1680-1 476 (500-1) | | 1820-1¾ 616 (700-1¾) 1820-2 616 (700-2) | |

EC-1, 31 JAN 2019 to 28 FEB 2019

EC-1, 31 JAN 2019 to 28 FEB 2019