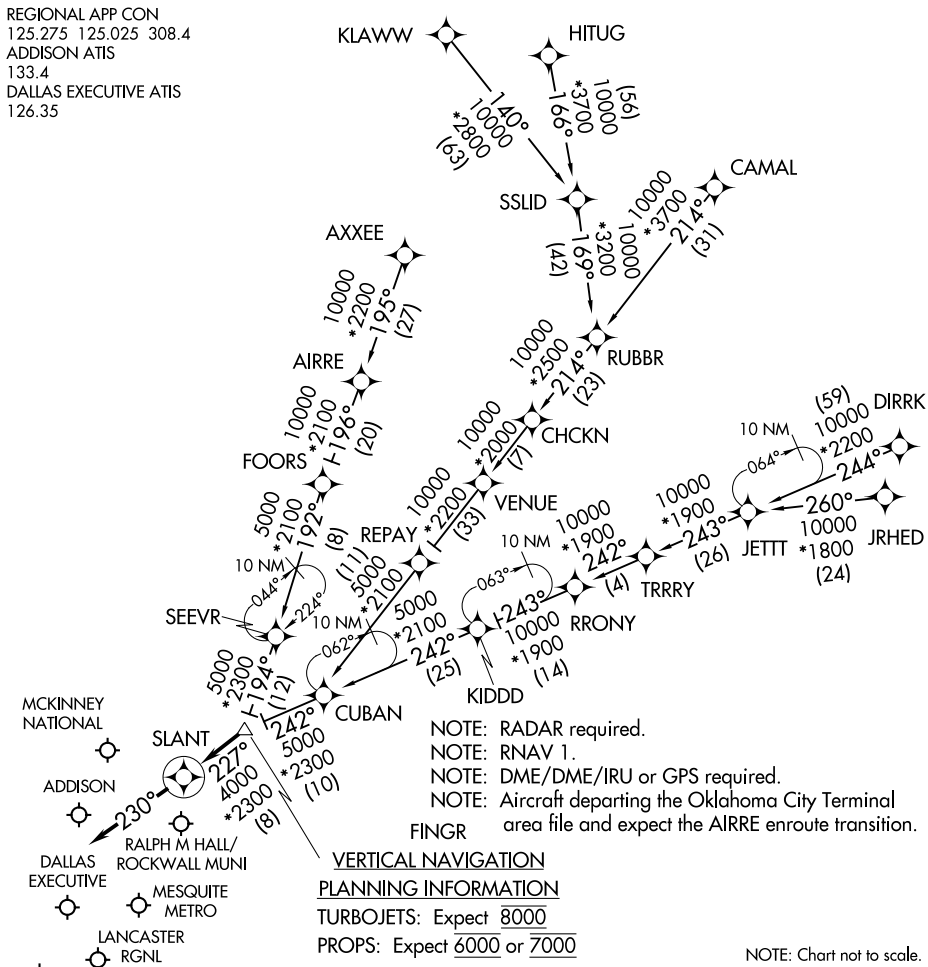


SLANT THREE ARRIVAL (RNAV)

DALLAS, TEXAS

REGIONAL APP CON
 125.275 125.025 308.4
 ADDISON ATIS
 133.4
 DALLAS EXECUTIVE ATIS
 126.35



SC-2, 31 JAN 2019 to 28 FEB 2019

SC-2, 31 JAN 2019 to 28 FEB 2019

NOTE: Chart not to scale.

ARRIVAL ROUTE DESCRIPTION

- AIRRE TRANSITION (AIRRE.SLANT3): (For traffic filing FL190 and below.)
- AXXEE TRANSITION (AXXEE.SLANT3): (For aircraft filing FL230 and below.)
- CAMAL TRANSITION (CAMAL.SLANT3)
- DIRRK TRANSITION (DIRRK.SLANT3)
- HITUG TRANSITION (HITUG.SLANT3)
- JRHED TRANSITION (JRHED.SLANT3): (ATC assigned only.)
- KLAWWW TRANSITION (KLAWWW.SLANT3)
- RRONY TRANSITION (RRONY.SLANT3): (For aircraft filing FL230 and below.)

From FINGR on track 227° to SLANT, then on track 230°.
 Expect RADAR vectors to final approach course.

SLANT THREE ARRIVAL (RNAV)

DALLAS, TEXAS