

|  |                        |   |
|--|------------------------|---|
| WAAS<br>CH <b>61105</b><br><b>W03A</b> | APP CRS<br><b>030°</b> | Rwy Idg <b>6801</b><br>TDZE <b>640</b><br>Apt Elev <b>640</b> |
|--|------------------------|---|

# RNAV (GPS) RWY 3

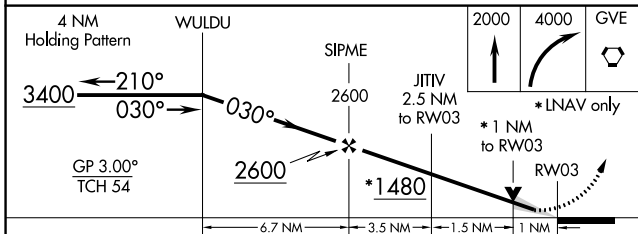
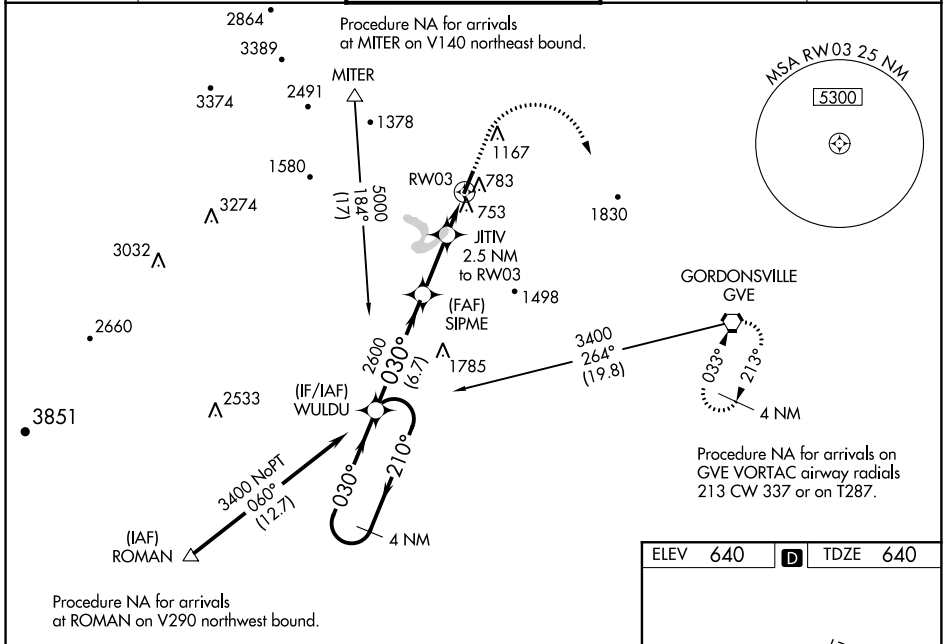
CHARLOTTESVILLE-ALBEMARLE (CHO)

**⚠** For uncompensated Baro-VNAV systems, LNAV/VNAV NA below -12°C (11°F) or above 54°C (130°F). DME/DME RNP-0.3 NA. When local altimeter setting not received, use Orange altimeter setting and increase LPV DA to 912, LNAV/VNAV DA to 986, and all MDA 80 feet; increase LNAV/VNAV all Cats visibility 1/8 mile, Circling Cats C/D visibility 1/4 mile, and LNAV Cats C/D visibility 3/8 mile. Baro-VNAV and VDP NA when using Orange altimeter setting. For inoperative MALS, increase LNAV/VNAV Cats C/D to 3/8 mile and LNAV Cats C/D visibility to 1 mile. For inoperative MALS when using Orange altimeter setting, increase LPV all Cats visibility to 3/8 mile, and LNAV Cats C/D visibility to 1 3/8 mile.

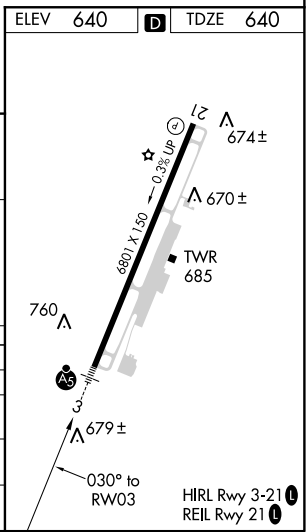
**MALS**

**MISSED APPROACH:**  
Climb to 2000 then climbing right turn to 4000 direct GVE VORTAC and hold.

|                        |  |   |                                 |                         |
|------------------------|--|---|---------------------------------|-------------------------|
| ATIS<br><b>118.425</b> | POTOMAC APP CON<br><b>132.85 323.125</b> | <b>CHARLOTTESVILLE TOWER *</b><br><b>124.5 (CTAF) 0 338.275</b> | GND CON<br><b>121.9 338.275</b> | UNICOM<br><b>122.95</b> |
|------------------------|--|---|---------------------------------|-------------------------|



| CATEGORY          | A                      | B                     | C                             | D                             |
|-------------------|------------------------|-----------------------|-------------------------------|-------------------------------|
| LPV DA            | 840-1/2                |                       | 200 (200-1/2)                 |                               |
| LNAV/VNAV DA      | 914-1/2                |                       | 274 (300-1/2)                 |                               |
| LNAV MDA          | 1020-1/2 380 (400-1/2) |                       | 1020-5/8 380 (400-5/8)        |                               |
| <b>C</b> CIRCLING | 1060-1<br>420 (500-1)  | 1100-1<br>460 (500-1) | 1500-2 1/2<br>860 (900-2 1/2) | 1500-2 3/4<br>860 (900-2 3/4) |



NE-3, 31 JAN 2019 to 28 FEB 2019

NE-3, 31 JAN 2019 to 28 FEB 2019