

LOC/DME I-CHO <b>111.7</b> Chan 54	APP CRS <b>030°</b>	Rwy Idg TDZE Apt Elev	<b>6801</b> <b>640</b> <b>640</b>
------------------------------------------	------------------------	-----------------------------	-----------------------------------------

# ILS or LOC RWY 3

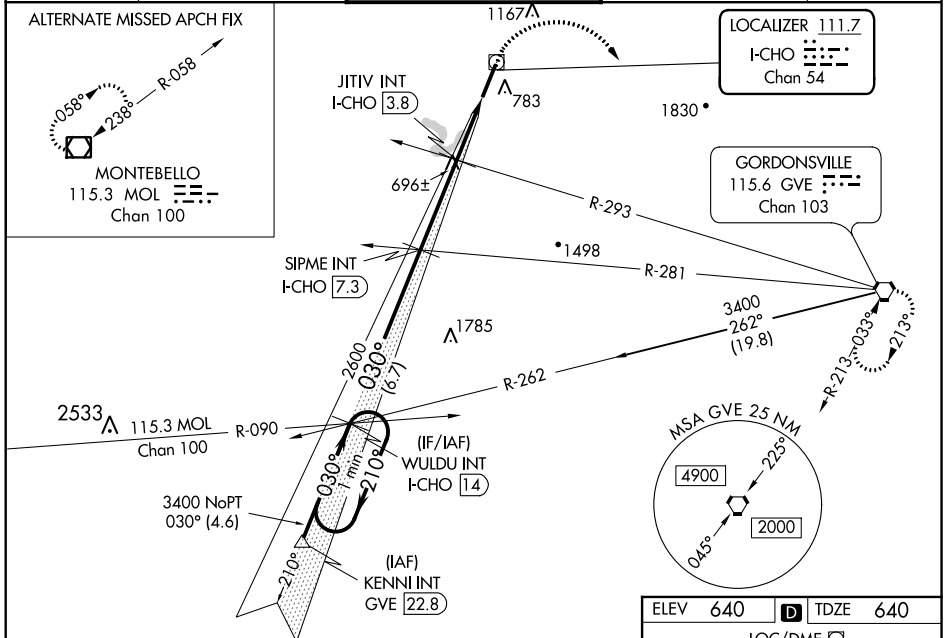
CHARLOTTESVILLE-ALBEMARLE (CHO)

**⚠** When local altimeter setting not received, use Orange altimeter setting and increase S-ILS 3 DA to 912 and all MDA 80 feet; increase S-LOC 3 Cats C/D, Circling Cats C/D, JITIV fix minimums S-LOC 3 Cats C/D, and JITIV fix minimums Circling Cats C/D visibility ¼ mile. VDP NA when using Orange altimeter setting. For Inop ALS when using Orange altimeter setting increase S-ILS 3 all Cats visibility to 7/8, S-LOC 3 Cats C, D visibility to 2 miles, and S-LOC 3 JITIV fix minimums Cat C, D visibility to 1 1/8 mile.



**MISSED APPROACH:**  
Climb to 2000 then climbing right turn to 4000 direct GVE VORTAC and hold.

ATIS <b>118.425</b>	POTOMAC APP CON <b>132.85 323.125</b>	CHARLOTTESVILLE TOWER ★ <b>124.5 (CTAF) 338.275</b>	GND CON <b>121.9 338.275</b>	UNICOM <b>122.95</b>
------------------------	------------------------------------------	--------------------------------------------------------	---------------------------------	-------------------------



NE-3, 31 JAN 2019 to 28 FEB 2019

NE-3, 31 JAN 2019 to 28 FEB 2019

Knots	60	90	120	150	180
Min:Sec	6:00	4:00	3:00	2:24	2:00