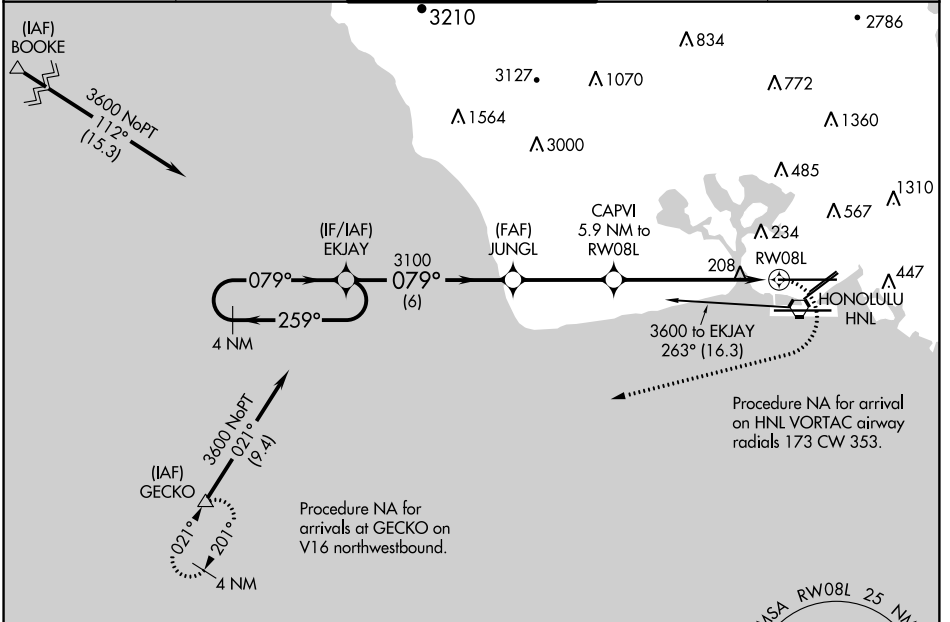


| | |
|-------------|----------------------|
| APP CRS | Rwy Idg 12300 |
| 079° | TDZE 13 |
| | Apt Elev 13 |

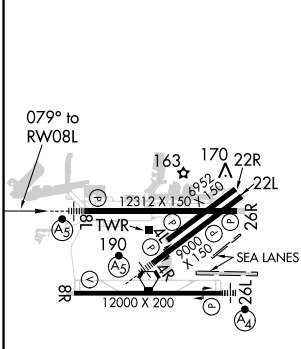
RNAV (GPS) Y RWY 8L

DANIEL K INOUEY INTL (HNL) (PHNL)

| | | | | |
|---|------------------------------------|---|--|--------------------------------|
| RNP APCH. | | MALSR | MISSED APPROACH: Climbing right turn to 3600 direct GECKO and hold. | |
| ⚠ Circling NA for Cats A and B northwest of Rwy 8L and 22R. Circling NA for Cats C, D, and E north of runway 8L-26R. For inop ALS, increase Cat E visibility to 1½ SM. Circling Rwy 22R NA at night. Circling NA to Sea Lanes 4W, 8W, 22W, and 26W. | | | | |
| D-ATIS 127.9 251.15 | HCF APPROACH 118.3 269.0 | HONOLULU TOWER 118.1 257.8 123.9 273.575 (Rwy 8R/26L) | GND CON 121.9 348.6 | CLNC DEL 121.4 281.4 |



| | | |
|---------|----------|---------|
| ELEV 13 | D | TDZE 13 |
|---------|----------|---------|



REIL Rwy 4L, 8R, 22L, 22R and 26R
HIRL Rwy 4L-22R, 4R-22L, 8L-26R and 8R-26L

| | | | | | | | |
|---|--|-------------------------------------|--|--|--|------|-------|
| 4 NM Holding Pattern 3600 ← 259° → 079° → 3100 3600 ← 259° → 079° → 3100 3.00° TCH 56 1.2 NM to RW08L | VGSi and descent angles not coincident (VGSi Angle 3.00/TCH 71). | | | | | 3600 | GECKO |
| | CATEGORY A B C D E | 460-½ 447 (500-½) 460-⅞ 447 (500-⅞) | | | | | |
| LNAV MDA 640-1 760-1 760-2¼ 1400-3 1940-3 | 627 (700-1) 747 (800-1) 747 (800-2¼) 1387 (1400-3) 1927 (2000-3) | | | | | | |
| CIRCLING | 640-1 760-1 760-2¼ 1400-3 1940-3 | | | | | | |

PAC: 03 JAN 2019 to 28 FEB 2019

PAC: 03 JAN 2019 to 28 FEB 2019