

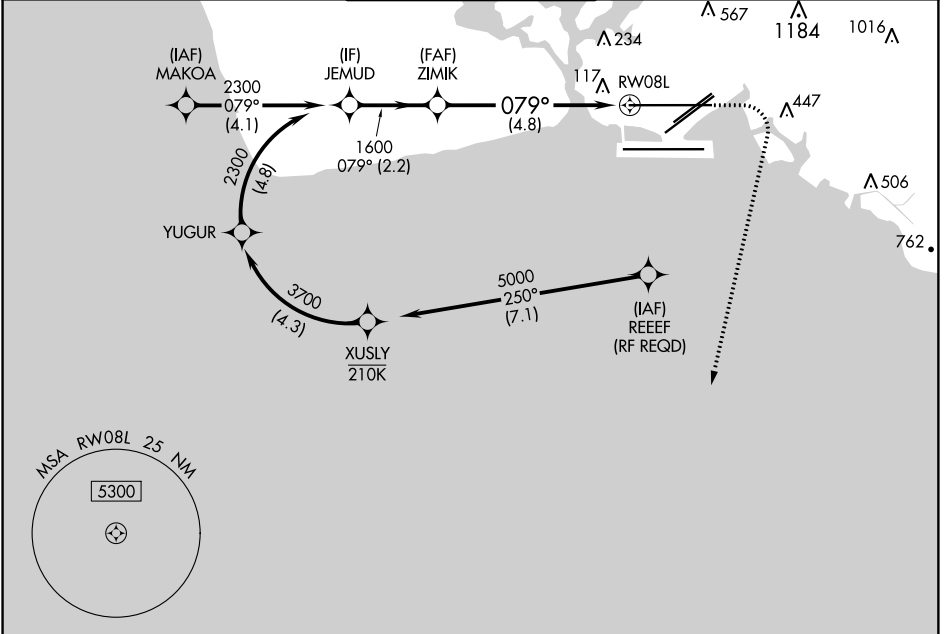
APP CRS	Rwy Idg	12300
079°	TDZE	13
	Apt Elev	13

RNAV (RNP) Z RWY 8L

DANIEL K INOUEY INTL (HNL) (PHNL)

GPS required. For uncompensated Baro-VNAV systems, procedure NA below 16°C (61°F) or above 54°C (130°F).	MALSR	MISSED APPROACH: Climb to 420 then climbing right turn to 3000 direct ALANA and hold.

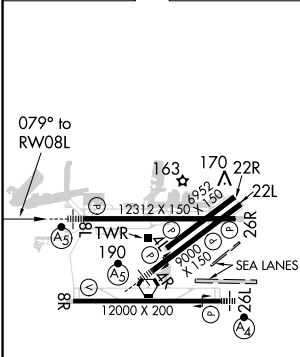
D-ATIS 127.9 251.15	HCF APPROACH 118.3 269.0	HONOLULU TOWER 118.1 257.8 123.9 273.575 (Rwy 8R/26L)	GND CON 121.9 348.6	CLNC DEL 121.4 281.4
-------------------------------	------------------------------------	---	-------------------------------	--------------------------------



PAC: 03 JAN 2019 to 28 FEB 2019

PAC: 03 JAN 2019 to 28 FEB 2019

ELEV 13	D	TDZE 13
---------	----------	---------



SEA LANES:
8W-26W 5000 X 300
4W-22W 3000 X 150

MIRL Rwy 4L-22R
REIL Rwy 4L, 8R, 22L, 22R and 26R
HIRL Rwy 4R-22L, 8L-26R and 8R-26L

