

LOC/DME I-EPC 109.1 Chan 28	APP CRS 304°	Rwy Idg TDZE 10 Apt Elev 13	12000
--	------------------------	---	--------------

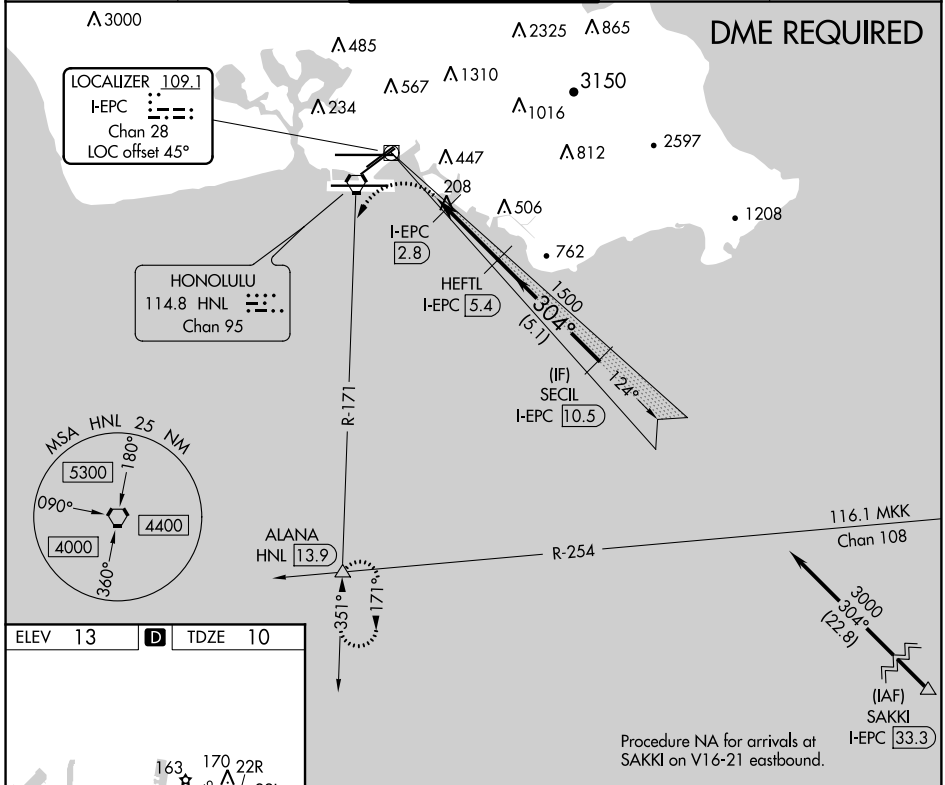
LDA RWY 26L

DANIEL K INOUYE INTL (HNL) (PHNL)

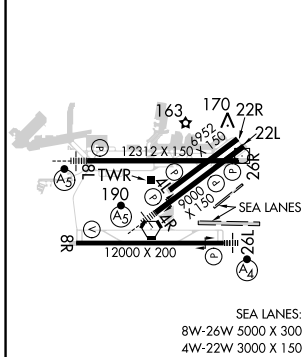
▼ Inop table does not apply. Circling Rwy 22R NA at night. DME required. Circling NA for Cats A and B northwest of Rws 8L and 22R. Circling NA for Cats C and D north of Rwy 8L-26R. Follow flasher lights to Rwy 26L. Procedure NA at night when MALSF inop. Circling NA to Sea Lanes 4W, 8W, 22W, and 26W.

▲ MALSF MISSED APPROACH: Climbing left turn to 3000 on HNL VORTAC R-171 to ALANA INT/HNL 13.9 DME and hold.

D-ATIS 127.9 251.15	HCF APPROACH 118.3 269.0	HONOLULU TOWER 118.1 257.8 123.9 273.575 (Rwy 8R/26L)	GND CON 121.9 348.6	CLNC DEL 121.4 281.4
-------------------------------	------------------------------------	---	-------------------------------	--------------------------------



ELEV 13	D	TDZE 10
---------	----------	---------



REIL Rws 4L, 8R, 22L, 22R and 26R HIRL Rws 4L-22R, 4R-22L, 8L-26R and 8R-26L	3000 ALANA HNL R-171	Use I-EPC DME when on localizer course.	HEFTL I-EPC 5.4	SECIL I-EPC 10.5	
	I-EPC 2.2	I-EPC 2.8	I-EPC 620	I-EPC 1500	
	1.8 NM	0.6	2.6 NM	5.1 NM	
CATEGORY	A	B	C	D	E
S-LDA 26L	560-2 550 (600-2)				
C CIRCLING	640-2 627 (700-2)	760-2 747 (800-2)	760-2 1/4 747 (800-2 1/4)	1400-3 1387 (1400-3)	NA

PAC. 03 JAN 2019 to 28 FEB 2019

PAC. 03 JAN 2019 to 28 FEB 2019